

## Guard Pro™ Series Hazardous Rated LED Floodlight

High-performance LED floodlight, designed for Class 1, Division 2 industrial environments



UL/cUL Listed to:

- UL 1598 Suitable for Wet Locations
- UL 1598A Marine Outside Type (Saltwater)
  - UL 844 Hazardous Locations
  - Class 1, Division 2 Groups A, B, C, D
  - Class II, Division 1 Groups E, F, G
  - Class II, Division 2 Groups F, G
  - Class III

IP66, ABS

2,600 lumens - 20W

7,800 lumens - 60W

13,000 lumens - 100W

19,500 lumens - 150W

26,000 lumens - 200W

120-277V, 50-60Hz

## Defend Flood™ 2 Explosion-proof LED Floodlight & High Bay

Aimable in 15° increments  
Mounting ceiling, wall or pendant



UL/cUL Certified to:

- UL 1598 Suitable for Wet Locations
- UL 844 Hazardous Locations

Class I, Division I Groups C & D

Class 1, Division 1 rated durable LED floodlight designed to withstand the harshest industrial and hazardous environments

T5, 100°C maximum surface temperature

IP66, TAA

Up to 14,000 lumens - 100W

Up to 28,000 lumens - 200W

120-277V, 347-480V, 1-10V

6kV surge protection

## Command Flood® Series Hazardous Industrial LED Floodlight

Designed to withstand moisture, corrosion and vibration in a range of outdoor environments



ETL/cETL Certified to:

- UL 1598 Suitable for Wet Locations
- UL 1598A Marine Outside Type (Saltwater)
- CSA C22.2 No. 250.0
- Class 1, Division 2 Groups A, B, C, D

Class 1, Division 2 rated durable LED floodlight designed to withstand moisture, high vibration and corrosion.

Up to 15,300 lumens - 120W

Up to 32,000 lumens - 240W

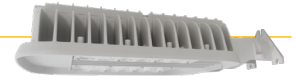
Up to 48,000 lumens - 360W

120-277V, 50-60Hz or 277-480V, 50-60Hz



## CVO 2 Hazardous Rated LED Floodlight

Wall or pole mount capable



UL/cUL Listed to:

- UL 1598 Suitable for Wet Locations
- UL 1598A Marine Outside Type (Saltwater)

Class 1, Division 2 rated durable LED area light with versatile mounting capabilities

CSA C22.2 No. 250.0

CE

UKCA

IP66

NEMA 4X

Type II (T2), Type III (T3), Type V (T5) optic, Full cutoff, zero uplight

Up to 75W, field adjustable output

Up to 11000 (50K), 8000 (22K) or 6500 (Amber) lumens

## HDL Series Hazardous Rated LED Floodlight

Class 1, Division 2 rated durable LED linear designed for wall and ceiling mount  
90-minute run time EMB  
1100 lumens



ETL/cETL Certified to:

- UL 1598 Suitable for Wet Locations
- UL 1598A Marine (Saltwater)
- UL 844 Hazardous Locations

Class I, Division 2 Groups A, B, C, D

Class I, Zone 2 Group IIC

T3C - 160°C maximum surface temperature

CE, ABS, IP67 rated

HDL1 - 28W, 2850 lumens

HDL2 - 55W, 5700 lumens

HDL3 - 83W, 8550 lumens

120-277V, 277-480V



## Conquer™ Series Linear

Driverless technology 120 or 277v.  
High Temperature up to 85°C



UL/cUL Listed to:

- UL 1598 Wet Locations
- UL 844 Hazardous Locations (-40°C to +55°C)

Class I, Division 2 Groups A, B, C, D

T4, 135°C (275°F) maximum surface temperature

Class II, Division 2 Groups F, G

T4A, 120°C (248°F) maximum surface temperature

Class III

IP67, NEMA

2ft - 60W 6600 lumens

4ft - 80W 9400 lumens

5000K 120V or 277V

-40°C to +85°C

## LFXB Series

90-minute run time EMB available on 4-foot model

UL/cUL Certified to:

- UL 1598 Suitable for Wet Locations
- UL 1598A Marine (Saltwater)
- UL 844 Hazardous Locations

Class 1, Division 1 Groups C & D

Class 1, Division 1 rated LED Linear for hazardous locations

T6, 85°C maximum surface temperature

Class II, Division 1 Groups E, F & G

T3B, 165°C maximum surface temperature

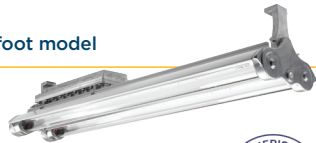
Class III

- UL 924 Emergency Lighting Equip

2 foot - 40W, up to 4200 lumens

4 foot - 80W, up to 8400 lumens

120-277V, 50/60Hz



## Conquer™ Series Flood

Driverless technology 120 or 277V.

High Temperature up to 85°C

UL/cUL Listed to:

- UL 1598 Suitable for Wet Locations
- UL 844 Hazardous Locations (-40°C to +40°C)

Class I, Division 2 Groups A, B, C, D

T4, 135°C (275°F) maximum surface temperature

Class II, Division 2 Groups F, G

IP67, NEMA 6

10 mm tempered glass - standard

Domed clear or diffuse polycarb lens

60W, 6000 lumens 5000K

COB technology



## Metallic LED VP Series

Wall (bulkhead) mount

Ceiling mount

UL/cUL Certified to:

- UL1598 Suitable for Wet Locations
- UL 1598A Marine Saltwater
- UL 844 Hazardous Locations

Class I, Division 2 Groups A, B, C, D

Class 1, Division 2 rated ceiling or wall mounted area light

Class I, Zone 2 T3A, 180°C maximum surface temperature

Class II, Division 2 Groups F, G

T4A, 120°C maximum surface temperature

IP66, ABS

17W, 1300 lumens

5600K and 3000K options

100-277V 0-10V dimming



## Wayfinder™ 2 Industrial LED Accessway Light and Pathway Light

Integrated EMB option (pending)

Pathway/walkway/overdoor light

Optically designed for optimal pathway and accessway lighting from a variety of different mounting heights

UL/cUL Listed to:

- UL 1598 Suitable for Wet Locations
- UL 924 EMB option (pending)

ABS (pending)

IP66

DLC

3.2W - 11W (field adjustable output), up to 1300 lumens



## WATER & WASTEWATER TREATMENT

## LIGHTING APPLICATION GUIDE

1

### Guard Pro™ Series C1D2 Area Light



For Hazardous locations, tank farms, chemical storage units, sludge pits and clarifiers

2

### Defend Flood™ 2 Series C1D1 Floodlight & High Bay



For hazardous locations with wall, ceiling and pendant mount options suitable for tank farms, chemical storage units, sludge pits and clarifiers

3

### Command Flood™ Series C1D2 Floodlight



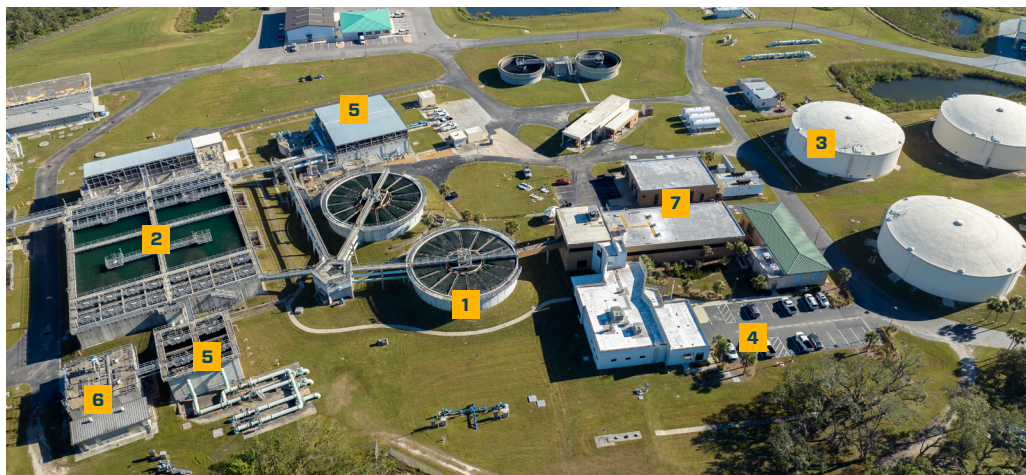
For hazardous and outdoor/indoor area lighting applications and a versatile range of mounting capabilities

4

### CVO 2 Series C1D2 Area Light



For hazardous and outdoor/indoor area lighting and perimeter lighting applications



5

### HDL Series C1D2 Linear Light



For hazardous and outdoor/indoor linear lighting, suitable for pump stations, process areas, machine rooms, maintenance rooms and general storage

6

### Ascend LHB Series LED High Bay



For non-hazardous indoor ceiling and high bay applications

7

### Metallic LED VP Series C1D2 Area Light



For hazardous catwalks, walkways and buildings with wall and ceiling mount capabilities