

## ! CAUTION

- All wiring should be done by a licensed electrician in accordance with state codes, local codes, National Electric Code (NEC) standards and International Electrotechnical Commission (IEC) standards.
- Improper installation may result in serious injury and void warranty.
- Keep wire connections dry.
- Contains parts and assemblies susceptible to damage by electrostatic discharge (ESD).
- When using luminaires, basic safety precautions should always be followed to reduce the risk of fire, electric shock and personal injury.

Included: Harp assembly, four (4) split washers and four (4) M6 screws.

## Shock Mount Base Removal (if ordered with base)

Remove four (4) M6 bolts from the bottom of the shock mount base (Figure 1). This will allow the shock mount base to be detached from the fixture.

## Harp Installation

Insert four (4) split lock washers and four (4) M6 screws (Figure 2) and tighten.

## Fixture Installation

1. Identify the desired mounting location for the fixture. Please note that the SturdiLED® can be mounted in any orientation.
2. The fixture should be mounted using two (2) M12 bolts, two (2) lock washers and two (2) flat washers (not provided).
3. The SturdiLED comes standard with a 72.00 inch (1829 mm) cord (pigtail). When wiring the fixture, please refer to the Wiring table (below).

## Wiring

AC Fixtures	CE Fixtures
black : line	brown : line
white : neutral	blue : neutral
green : ground	green/yellow : ground

## Repair Parts List

Repair Part	Part Number
28° optic lens assembly	010184.900
45° optic lens assembly	010184.901
LED board assembly	010184.902
AC driver kit	010184.903
back cover assembly	010184.905
stainless steel harp kit	010184.908

Figure 1

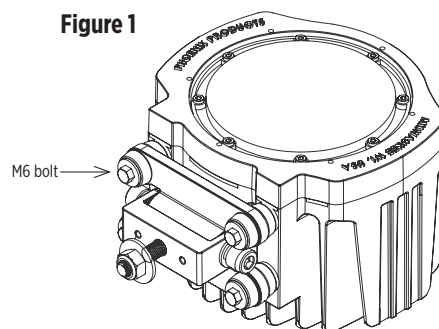
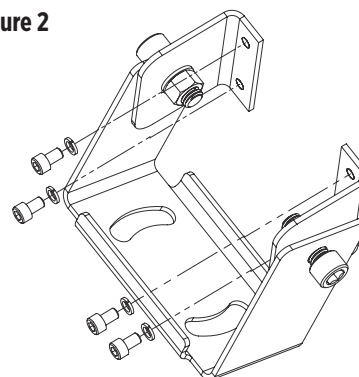
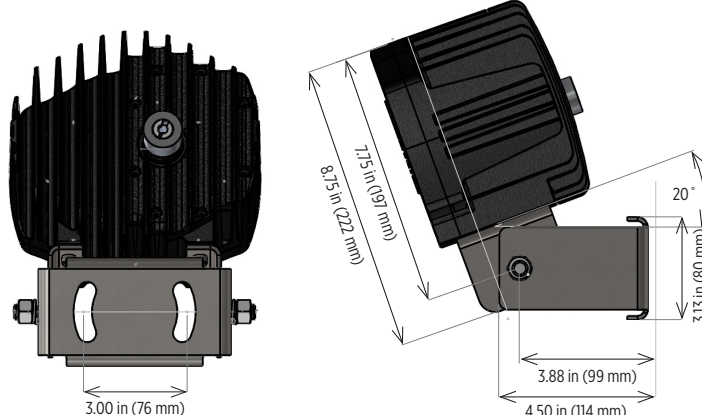


Figure 2



## Dimensions



Product design and specifications are subject to change without notice.

