

! CAUTION

- All wiring should be done by a licensed electrician in accordance with state codes, local codes and National Electric Code (NEC) standards.
- Improper installation may result in serious injury and void warranty.
- Contains parts and assemblies susceptible to damage by electrostatic discharge (ESD).
- This product must be installed in accordance with the applicable installation code by a person familiar with the construction and operation of the product and the hazards involved.
- Do not make or alter any open holes in an enclosure of wiring or electrical components during kit installation.
- Do not alter the exterior housing or lens cover.
- **CAUTION:** Risk of fire. Consult a qualified electrician to ensure correct branch circuit conductor.
- **WARNING:** Risk of fire or electric shock. LED Retrofit Kit installation requires knowledge of luminaires electrical systems. If not qualified, do not attempt installation. Contact a qualified electrician.
- **WARNING:** Risk of fire or electric shock. Install this kit only in luminaires that have the construction features and dimensions shown in the photographs and/or drawings and where the input rating of the retrofit kit does not exceed the input rating of the luminaire.
- **WARNING:** To prevent wiring damage or abrasion, do not expose wiring to edges of sheet metal or other sharp objects.

! IMPORTANT SAFEGUARDS

- To prevent high voltage from being present on driver output leads prior to installation, inverter connector must be open. Do not join inverter connector until installation is complete and AC power supply is connected to the emergency driver.
- To reduce risk of shock, disconnect both normal and emergency power supplies and inverter connector of the emergency driver before servicing fixture.
- Do not attempt to service battery alongside emergency driver.
- When using electrical equipment, basic safety precautions should always be followed including the following:
 - **READ AND FOLLOW ALL SAFETY INSTRUCTIONS.**
 - Do not mount near gas or electric heaters.
 - Equipment should be mounted in locations and at heights where it will not readily be subjected to tampering by unauthorized personnel.
 - The use of accessory equipment not recommended by the manufacturer may cause an unsafe condition.
 - Do not use this equipment for other than intended use.
 - Maximum mounting height is 17 feet (5.2 m).
 - The AC voltage rating for this equipment is specified on the product label. Do not connect equipment to any other voltage.

Save these instructions.

Tools and Materials

Phoenix Provided

- (1) 2 hour emergency battery
- (1) Ballast
- (7) 2 position Wago connectors
- (1) 3 position Wago connectors
- (4) Mounting hardware (split washer, flat washer, nut)



ReadiLED™ Series 2 Hour EMB Kit

Installation Instructions

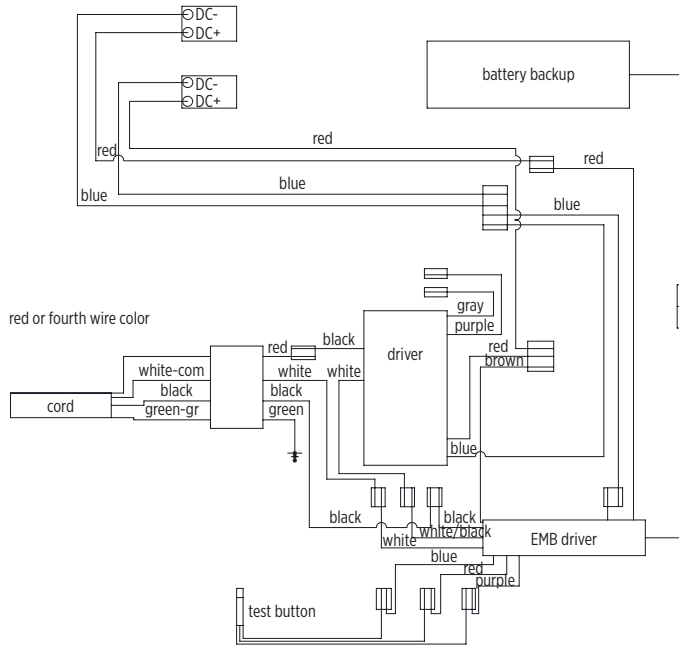
Wiring

The standard fixture contains a factory-installed terminal block, which accepts up to 12 AWG wire.

For AC systems: Green is ground (PE), black is line and white is neutral.

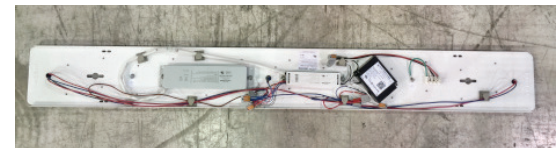
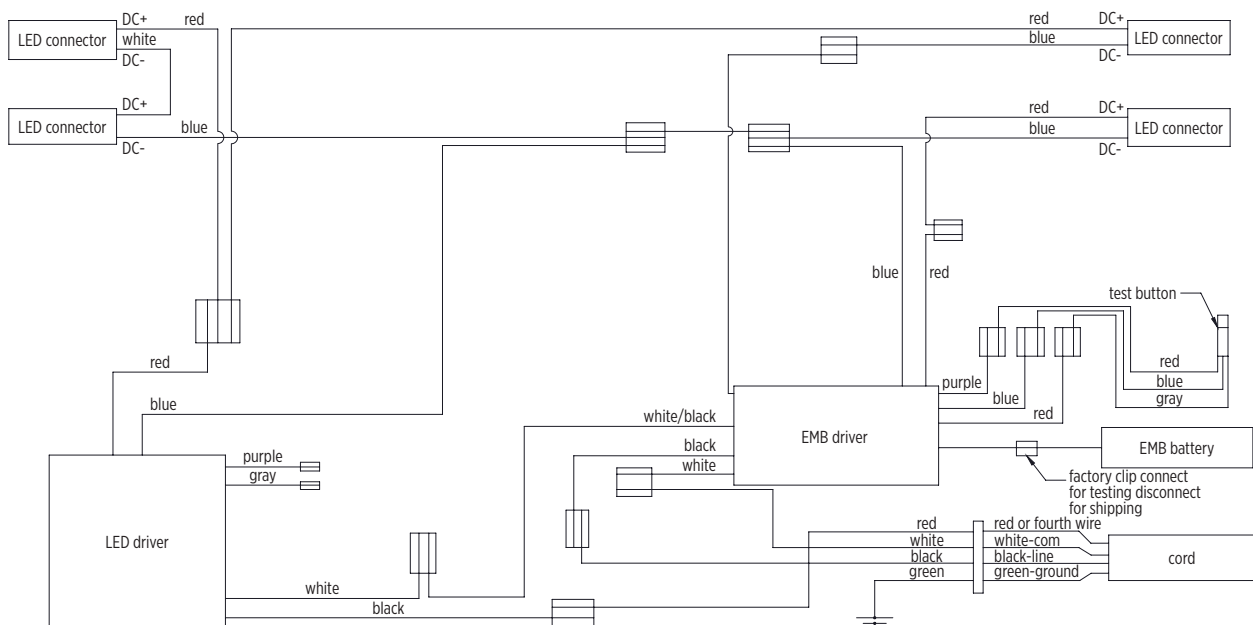
An unswitched power supply must be available for emergency driver use. The unswitched lead must be fed from the same branch circuit as the switched lead.

Wiring Diagram for 2 Foot Driver Tray



Wiring for 2 foot driver tray

Wiring Diagram for 4 Foot Driver Tray



Wiring for 4 foot driver tray

Installation



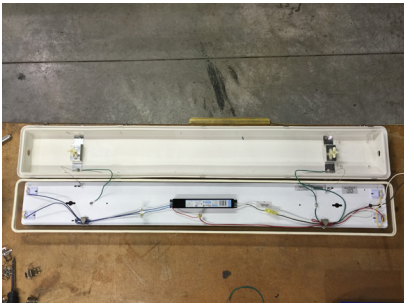
1. Turn off power supply.
2. Unhook diffuser clips.



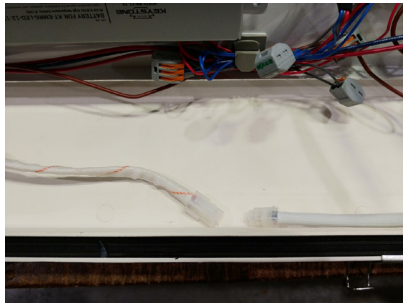
3. Remove lanyard clips from ballast tray.



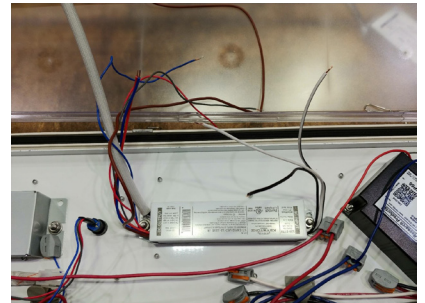
4. Turn the ballast hold-down so it fits inside the cutout hole on the driver tray.



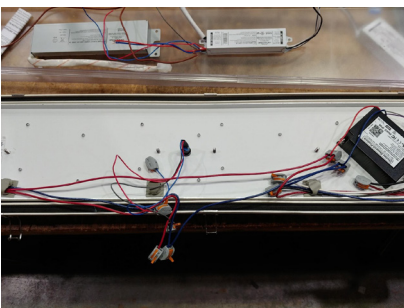
5. Pull ballast tray out of housing.



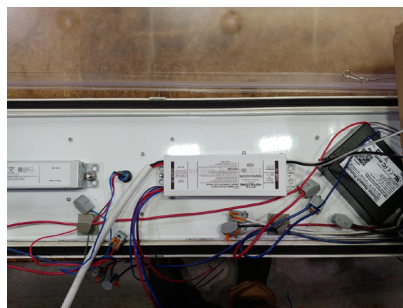
6. Disconnect quick connector from the battery.



7. Disconnect all leads coming from EMB driver.

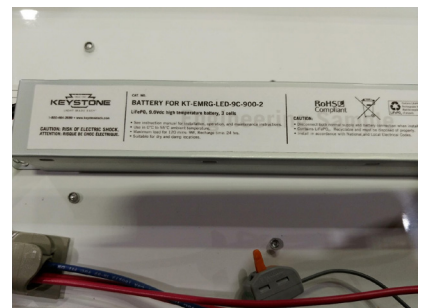


8. Physically remove both EMB battery and EMB driver.



9. Install new 2 hour EMB battery and EMB driver using the mounting hardware provided. Refer to wiring instructions provided on Page 2.

Note: When replacing a 2 hour EMB on a RLED4, you may need to relocate the wire anchor for spacing purposes.



10. Join inverter connection (with integral plug/receptacle) of EMB driver after connecting incoming leads.
11. Charge unit for 24 hours before use.



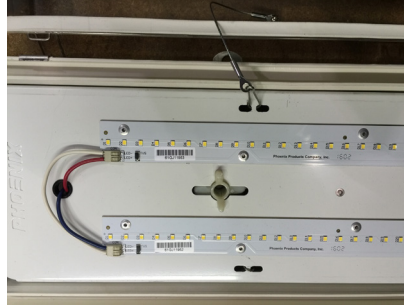
ReadiLED™ Series 2 Hour EMB Kit

Installation Instructions

PHOENIX®
DURABILITY X DESIGN™



12. Reinstall tray into housing then turn hold-down fasteners ¼ turn to secure.



13. Reinstall diffuser lanyards to driver tray on opposite side from where housing lanyards are located.



14. Secure diffuser to housing using the diffuser clips on the housing. Turn on power supply.

Operation of Emergency Driver



When AC power is applied, the charging indicator is illuminated, indicating that the battery is being charged.

When power fails, the emergency driver automatically switches to emergency power (battery pack). The fixture will then operate one LED strip at reduced illumination for at least 120 minutes.

A spot test of emergency driver function may be performed by removing lens and depressing test switch on lamp side of the reflector. One strip should operate at reduced illumination while the switch is depressed.

For additional information, please refer to EMB system installation instructions initially provided.