



**PHOENIX**<sup>®</sup>  
DURABILITY X DESIGN™

## LEDLT

### LED Tube Light

Designed to replace select linear fluorescent fixtures

For use on walkways, heavy equipment, railcars, and other marine and industrial applications

Slim, lightweight design offered with various mounting options

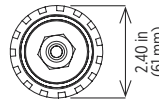
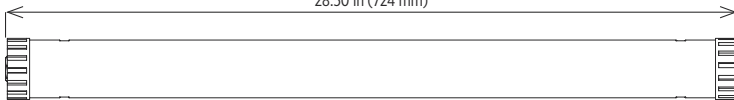
LED technology increases efficiency, eliminates maintenance and supports green initiatives



### Dimensions

LEDLT-28

28.50 in (724 mm)



### Specifications

<b>Construction</b>	Impact-resistant polycarbonate housing and end caps Extruded aluminum internal mounting plate
<b>Hardware</b>	Marine grade (304) stainless steel
<b>Light source</b>	up to 10W, 1250 lumens (AC) up to 14W, 1100 lumens (DC) CRI > 80 Cool white LEDs 50,000 hour rated life
<b>Power source</b>	120-277V, 50-60Hz (fully potted driver) 20-50V DC
<b>Power factor</b>	> 0.95
<b>Wiring</b>	5 foot (1.5 m) cord with pigtail - standard on AC; optional on DC Two 5 foot (1.5 m) cords with pigtails; one on each end of fixture (2C) Two 10 inch (254 mm) cords with pigtails; one on each end of fixture - standard on DC
<b>Ambient operating temperature</b>	-20°C to +40°C
<b>Mounting</b>	Mounting to be ordered separately for complete installation Single fixture surface mount (MB-LEDLT) Hook mount (HKMT-LEDLT) Rail mount (RLMT-LEDLT) Two fixture surface mount (SFMT-LEDLT)
<b>Weight</b>	Fixture - 3.0 lb (1.3 kg) Packaged - 4.1 lb (1.8 kg)
<b>Diffusion</b>	Diffuse optical film within clear polycarbonate tube (AC models) Opaque polycarbonate tube (DC models)
<b>Warranty</b>	5 years

For IES files, see website or contact factory

### Compliances

ETL/cETL Certified to:

- UL 1598 Suitable for Wet Locations
- UL 1598A Marine Outside Type (Saltwater)
- CSA C22.2 No. 250.0

ABS

IP66 rated

LM79 and LM80 reports available

## Ordering Information

Example: LEDLT-28

Fixture	Length	Voltage <sup>1</sup>	Wiring Options
LEDLT	28	DC-HD <sup>2,3</sup>	2C CD <sup>4</sup>

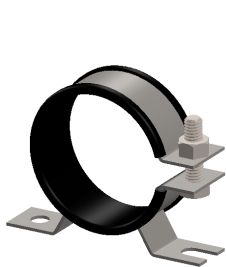
Length	Voltage <sup>1</sup>	Wiring Options
28 28 inch fixture	DC-HD <sup>2,3</sup> 20-50V DC fixture	2C Two 5 foot (1.5 m) cords; one on each end of fixture (pigtail) CD <sup>4</sup> One 5 foot (1.5 m) cord with pigtail

### Notes

- 1 Leave blank for 120-277V, 50-60Hz - standard
- 2 Comes standard with two 10 inch (254 mm) pigtails, one on each end
- 3 No certifications on DC models
- 4 One 5 foot (1.5 m) cord with pigtail standard on 120-277V AC models (leave blank). CD is optional on DC models and should be included in nomenclature if desired.

**Special Projects:** We may be able to accommodate your special projects, so please don't hesitate to ask about additional options. Minimum order quantities and/or extended lead times will apply. Contact your Phoenix representative with specific inquiries.

## Mounting (required for complete installation - order separately)



**Single Fixture Surface Mount**  
MB-LEDLT  
(set of 2)



**Hook Mount**  
HKMT-LEDLT



**Rail Mount**  
RLMT-LEDLT  
(set of 2)



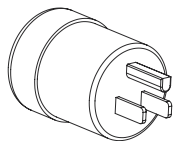
**Two Fixture Surface Mount**  
SFMT-LEDLT  
(set of 2)

Contact factory for additional mounting options  
All mounting accessories consist of marine grade stainless steel

## Accessories (order separately)



**Gear Wrench**  
GW-LEDLT



**NEMA 5-15 plug (120V only)**  
PLG-515



# LEDLT

LED Tube Light

**PHOENIX**<sup>®</sup>  
DURABILITY X DESIGN<sup>™</sup>

*Cover photo: LEDLT fixtures mounted in a grain facility loading area*

Product design and specifications are subject to change without notice. The most current version of this specification sheet can be found on our website: [www.phoenixlighting.com](http://www.phoenixlighting.com).



Phoenix Lighting 8711 West Port Avenue Milwaukee, WI 53224 USA  
Phone: +1 414.973.3300 Toll Free: 800.438.1214 Fax: +1 414.973.3210 [www.phoenixlighting.com](http://www.phoenixlighting.com)

N5611023K  
09.02.21