



**PHOENIX<sup>®</sup>**  
DURABILITY X DESIGN™



## LEDLT

### LED Tube Light

Designed to replace select linear fluorescent fixtures

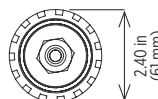
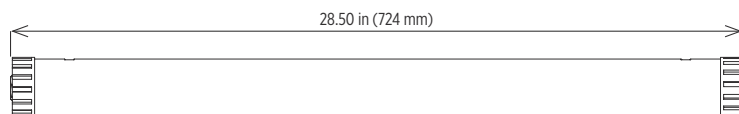
For use on walkways, heavy equipment, railcars, and other marine and industrial applications

Slim, lightweight design offered with various mounting options

LED technology increases efficiency, eliminates maintenance and supports green initiatives

### Dimensions

LEDLT-28



## Specifications

|                                      |   |
|--------------------------------------|---|
| <b>Construction</b>                  | Impact-resistant polycarbonate housing and end caps<br>Extruded aluminum internal mounting plate  |
| <b>Hardware</b>                      | Marine grade (304) stainless steel  |
| <b>Light source</b>                  | Phillips light emitting diodes (LEDs)<br>10W, 1250 lumens<br>CRI > 80<br>CCT 5000K<br>50,000 hour rated life                            |
| <b>Power source</b>                  | 120-277V, 50/60Hz - standard<br>Fully potted  |
| <b>Power factor</b>                  | > 0.95  |
| <b>Wiring</b>                        | 1.50 m cord - standard<br>Two 1.50 m cords (120-277V); one on each end of fixture (2C)  |
| <b>EMB</b>                           | Contact factory   |
| <b>Ambient operating temperature</b> | -20°C to +40°C  |
| <b>Mounting</b>                      | Single fixture surface mount (MB-LEDLT)<br>Hook mount (HKMT-LEDLT)<br>Rail mount (RLMT-LEDLT)<br>Two fixture surface mount (SFMT-LEDLT) |
| <b>Weight</b>                        | Fixture - 3.0 lb (1.3 kg)<br>Packaged - 4.1 lb (1.8 kg)   |
| <b>Optical film</b>                  | Diffuse optical film  |
| <b>Warranty</b>                      | 5 years   |

For IES files, see website or contact factory

## Compliances

ETL/cETL Certified to:

- UL 1598 Suitable for Wet Locations
- UL 1598A Marine Outside Type (Saltwater)
- CSA C22.2 No. 250.0

ABS

IP66 rated

LM79 and LM80 reports available



## Ordering Information

Example: LEDLT-28

| Fixture | Length | Options |
|---------|--------|---------|
| LEDLT   | 28     | 2C      |

### Length

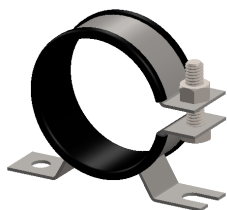
28 28 inch fixture - 10W, 1250 lumens

### Options

2C Two 1.50 m cords (120-277V); one on each end of fixture (pigtail)

**Special Projects:** We may be able to accommodate your special projects, so please don't hesitate to ask about additional options. Minimum order quantities and/or extended lead times will apply. Contact your Phoenix representative with specific inquiries.

## Mounting (required for complete installation - order separately)



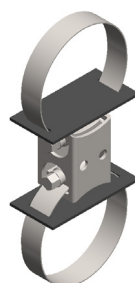
**Single Fixture Surface Mount**

MB-LEDLT  
(set of 2)



**Hook Mount**

HKMT-LEDLT



**Rail Mount**

RLMT-LEDLT  
(set of 2)



**Two Fixture Surface Mount**

SFMT-LEDLT  
(set of 2)

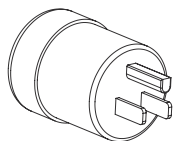
*Contact factory for additional mounting options  
All mounting accessories consist of marine grade stainless steel*

## Accessories (order separately)



**Gear Wrench**

GW-LEDLT



**NEMA 5-15 plug (120V only)**

PLG-515



# LEDLT

LED Tube Light

**PHOENIX**<sup>®</sup>  
DURABILITY **X** DESIGN™

*Cover photo: LEDLT fixtures mounted in a grain facility loading area*

Product design and specifications are subject to change without notice. The most current version of this specification sheet can be found on our website: [www.phoenixlighting.com](http://www.phoenixlighting.com).



Phoenix Lighting 8711 West Port Avenue Milwaukee, WI 53224 USA  
Phone: +1 414.973.3300 Toll Free: 800.438.1214 Fax: +1 414.973.3210 [www.phoenixlighting.com](http://www.phoenixlighting.com)

N5611023J  
04.01.19