

LED Berth & Mirror Light

Marine, below-deck fixture for berth, mirror, and bunk lighting

Durable, marine grade components offer resistance against corrosion and high vibration

LED technology increases efficiency, eliminates maintenance and supports green initiatives



Key Applications

Berth lighting
Mirror lighting

Compliances

UL/cUL Listed to:

- UL 1598 Suitable for Damp Locations
- UL 1598A Marine Inside Type
- CSA C22.2 No. 250.0-08

Buy American Act (BAA)

Specifications

| | |
|-------------------------------|--|
| Construction | Corrosion-resistant, marine grade, low-copper content aluminum alloy housing White ABS material cover |
| Finish | Stainless steel external hardware |
| Lens | Diffuse acrylic lens |
| Light source | Philips light emitting diodes (LED) Up to 520 lumens (14W) 2x8W fluorescent equivalent Warm white (3000K) |
| Power source | 120V, 50/60Hz (USB) 120-277V, 50/60Hz (LS-LR) Over-voltage and short-circuit protection with auto-recovery |
| Wiring | 120V three-wire convenience outlet, on/off switch, and two (2) USB ports (USB) |
| Ambient operating temperature | 0°C to +25°C |
| Mounting | Wall mount |
| Weight | 3.0 lb (1.1 kg) |
| Warranty | 3 years |

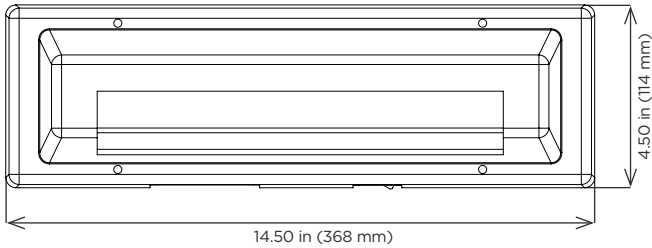
For IES files, see website or contact factory



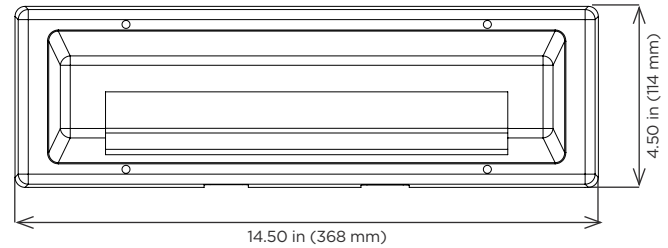
This product complies with domestic preference requirements such as BAA or TAA. For additional information, visit phoenixlighting.com or consult your representative.

Dimensions

USB



LS-LR



Ordering Information

Example: LEDBM-120-WW-USB

| Fixture | Voltage | Color Temperature | Option |
|---------|---------|-------------------|--------|
| LEDBM | 120 | WW | USB |
| | | | LS-LR |

Voltage

120 120V AC driver

Color Temperature

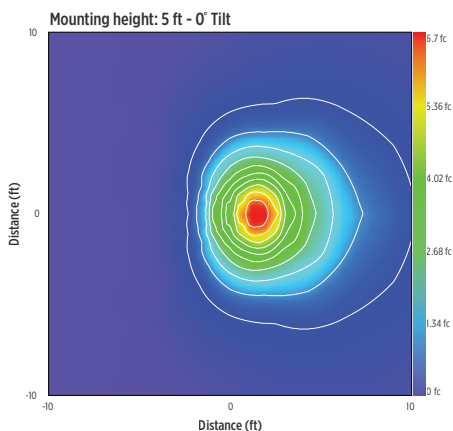
WW Warm white (3000K)

Option

USB Comes with switch, receptacle and two (2) USB ports
LS-LR Option without switch, receptacle and USB ports

Special Projects: We may be able to accommodate your special projects, so please don't hesitate to ask about additional options. Minimum order quantities and/or extended lead times will apply. Contact your Phoenix representative with specific inquiries.

Isolux Charts



Product design and specifications are subject to change without notice. The most current version of this specification sheet can be found at www.phoenixlighting.com.