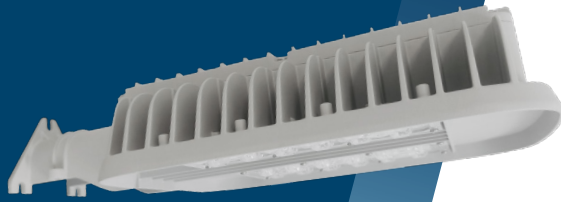


Compact, Versatile, Outdoor-Rated Area Light



75W fixture delivers up to 11,000 lumens

Economic yet durable design

Primary applications include walkways, street lighting, conveyor belts, perimeter lighting as well as general wall or pole mount lighting

Meets requirements for DarkSky compliance as well as Chilean blue light regulations

Key Applications

- Heavy industrial conveyor belts
- Catwalk lighting
- Bulk material handling
- Narrow pathways & walkways
- Pole lighting
- Wall perimeter lighting
- General area lighting
- Street lighting

Compliances

ETL/cETL Certified to:

- UL 1598 Suitable for Wet Locations
- UL 1598A Marine Outside Type (Saltwater)
- UL 844 Hazardous Location
 - Class I, Division 2 Groups A, B, C, D
 - Class II, Division 2 Groups F & G
 - Class III, Division 2
 - T5 - 100°C maximum surface temperature
- CSA C22.2 No. 250.0
- CSA C22.2 No. 137

CE

UKCA

IP66

NEMA 4X

DLC

DarkSky International approved (2200K & Amber models only)

FCC Part 15, Subpart B, Class A standards for conducted and radiated emissions.

RoHS compliant

In accordance with Chilean regulations of Supreme Decree No. 1 of 2022 (2200K contains less than 7% blue light and Amber contains less than 1% blue light)

Specifications

Construction	Marine grade, cast aluminum housing
Finish	Gray polyester powder coat
Hardware	Marine grade 316 stainless steel
Lens	Impact-resistant polycarbonate Type II (T2), Type III (T3), Type V (T5) optic options Full cutoff, zero uplight
Light source	5000K LEDs (50K), up to 11,000 lumens 2200K LEDs (22K), up to 8,000 lumens Amber LEDs (AM), up to 6,500 lumens Up to 75W, field adjustable output 50,000 hour rated life
Power source	120-277V, 50-60Hz or 277-480V, 50-60Hz Overload, over-voltage, over-temperature and short-circuit protection 0-10V dimming capable
Power factor	>.9 at 120V
Wiring	Stranded wire leads Water-tight cord grip and conduit hub provided
Ambient operating temperature	-40°C to +50°C (standard)
Mounting	Wall or pole mount capable Accommodates NPS 1.25 inch (1.66 inch OD)/ DN 32 mm (42 mm OD)
Vibration	3G at resonant frequency
Estimated weight	6.0 lb (2.7 kg) - standard
Warranty	5 years

For IES files, see website or contact factory

CVO 2

Compact, Versatile, Outdoor-Rated Area Light

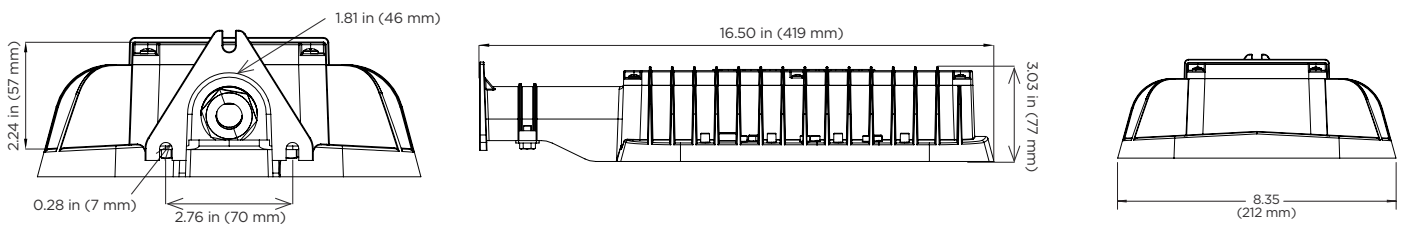
PHOENIX[®]
DURABILITY X DESIGN™

Dimming Levels (CVO2-50K)

Level	Watts	Estimated Lumen Output
(I) - 100%	70	11000
(II) - 75%	50	7850
(III) - 50%	30	4700
(IV) - 25%	14	2200

Dimensions

CVO2



Ordering Information

Example: CVO2-LED-T2-120-277-50K

Fixture	Type	Optic	Voltage	Temperature	Options
CVO2	LED	T2	120-277	50K	PC ¹
		T3	277-480	22K ²	
		T5		AM ²	

Type	Optic	Voltage	Temperature
LED up to 75W	T2 Type II T3 Type III T5 Type V	120-277 120-277V, 50-60Hz 277-480 277-480V, 50-60Hz	50K 5000K LEDs, up to 11,000 lumens 22K ² 2200K LEDs, up to 8,000 lumens, < 4% blue light AM ² Amber LEDs, up to 6,500 lumens, < 1% blue light

Options

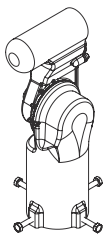
PC¹ Photocell

Notes

- 1 Contact factory.
- 2 DarkSky International approved.

Special Projects: We may be able to accommodate your special projects, so please don't hesitate to ask about additional options. Minimum order quantities and/or extended lead times will apply. Contact your Phoenix representative with specific inquiries.

Accessories (order separately)



Adjustable Tenon Mount Kit

CVO-MNT Adjustable in 5° increments
Accommodates NPS 1.00 inch pipe (1.32 inch OD)/DN 25 mm (34 mm OD),
NPS 1.25 inch pipe (1.66 inch OD)/DN 32 mm (42 mm OD),
NPS 1.50 inch pipe (1.90 inch OD)/DN 40 mm (48 mm OD) and
NPS 2.00 inch pipe (2.38 inch OD)/DN 50 mm (60 mm OD)