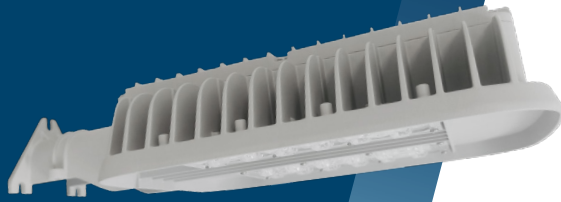


**Compact, Versatile, Outdoor-Rated Area Light**



75W fixture delivers up to 10,000 lumens

Economic yet durable design

Primary applications include walkways, street lighting, conveyor belts, perimeter lighting as well as general wall or pole mount lighting

Meets requirements for Dark Sky compliance with minimal blue light

**Key Applications**

- Heavy industrial conveyor belts
- Catwalk lighting
- Bulk material handling
- Narrow pathways & walkways
- Pole lighting
- Wall perimeter lighting
- General area lighting
- Street lighting

**Compliances**

ETL/cETL Certified to:

- UL 1598 Suitable for Wet Locations
- UL 1598A Marine Outside Type (Saltwater)
- UL 844 Hazardous Location
  - Class I, Division 2 Groups A, B, C, D
  - Class II, Division 2 Groups F & G
  - T5 - 100°C maximum surface temperature
- CSA C22.2 No. 250.0
- CSA C22.2 No. 137

CE

UKCA

IP66

NEMA 4X

DarkSky International approved (2200K & Amber models only)

FCC Part 15, Subpart B, Class A standards for conducted and radiated emissions.

RoHS compliant

In accordance with Chilean regulations of Supreme Decree No. 1 of 2022 (2200K contains less than 7% blue light and Amber contains less than 1% blue light)

**Specifications**

<b>Construction</b>	Marine grade, cast aluminum housing
<b>Finish</b>	Gray polyester powder coat
<b>Hardware</b>	Marine grade 316 stainless steel
<b>Lens</b>	Impact-resistant polycarbonate Type II (T2), Type III (T3), Type V (T5) optic options Full cutoff, zero uplight
<b>Light source</b>	5000K LEDs (50K), up to 11,000 lumens 2200K LEDs (22K), up to 8,000 lumens Amber LEDs (AM), up to 6,500 lumens Up to 75W, field adjustable output 50,000 hour rated life
<b>Power source</b>	120-277V, 50-60Hz or 277-480V, 50-60Hz Overload, over-voltage, over-temperature and short-circuit protection 0-10V dimming capable
<b>Power factor</b>	>.9 at 120V
<b>Wiring</b>	Stranded wire leads Water-tight cord grip and conduit hub provided
<b>Ambient operating temperature</b>	-40°C to +50°C (standard)
<b>Mounting</b>	Wall or pole mount capable Accommodates NPS 1.25 inch (1.66 inch OD)/ DN 32 mm (42 mm OD)
<b>Vibration</b>	3G at resonant frequency
<b>Estimated weight</b>	6.0 lb (2.7 kg) - standard
<b>Warranty</b>	5 years

*For IES files, see website or contact factory*

# CVO 2

Compact, Versatile, Outdoor-Rated Area Light

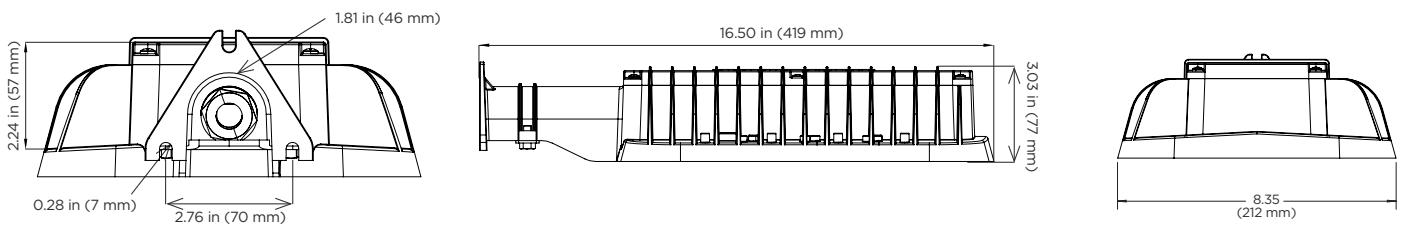
**PHOENIX**<sup>®</sup>  
DURABILITY X DESIGN™

## Dimming Levels (CVO2-50K)

Level	Watts	Estimated Lumen Output
(I) - 100%	70	11000
(II) - 75%	50	7850
(III) - 50%	30	4700
(IV) - 25%	14	2200

## Dimensions

### CVO2



## Ordering Information

**Example:** CVO2-LED-T2-120-277-50K

Fixture	Type	Optic	Voltage	Temperature	Options
CVO2	LED	T2	120-277	50K	PC <sup>1</sup>
		T3	277-480	22K <sup>2</sup>	
		T5		AM <sup>2</sup>	

Type	Optic	Voltage	Temperature
LED up to 75W	T2 Type II	120-277 120-277V, 50-60Hz	50K 5000K LEDs, up to 11,000 lumens
	T3 Type III	277-480 277-480V, 50-60Hz	22K <sup>2</sup> 2200K LEDs, up to 8,000 lumens, < 4% blue light
	T5 Type V		AM <sup>2</sup> Amber LEDs, up to 6,500 lumens, < 1% blue light

**Options**

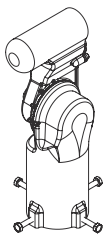
PC<sup>1</sup> Photocell

### Notes

- 1 Contact factory.
- 2 DarkSky Approved.

**Special Projects:** We may be able to accommodate your special projects, so please don't hesitate to ask about additional options. Minimum order quantities and/or extended lead times will apply. Contact your Phoenix representative with specific inquiries.

## Accessories (order separately)



### Adjustable Tenon Mount Kit

CVO-MNT Adjustable in 5° increments  
Accommodates NPS 1.00 inch pipe (1.32 inch OD)/DN 25 mm (34 mm OD),  
NPS 1.25 inch pipe (1.66 inch OD)/DN 32 mm (42 mm OD),  
NPS 1.50 inch pipe (1.90 inch OD)/DN 40 mm (48 mm OD) and  
NPS 2.00 inch pipe (2.38 inch OD)/DN 50 mm (60 mm OD)