

Designed to replace linear fluorescent fixtures and mid-power floodlights

For use on heavy equipment, conveyors, machine houses and other demanding applications

Compact, low profile design with various output levels and mounting options

LED technology increases efficiency, eliminates maintenance and supports green initiatives

Key Applications

Hazardous locations	Offshore wind turbine lighting
Electric rope shovels	Emergency lighting
Machine house lighting	Passageways
Electrical room lighting	Draglines
Engine room lighting	Cargo holds

Compliances

ETL/cETL Certified to:

- UL 1598 Suitable for Wet Locations
- UL 1598A Marine Outside Type (Saltwater)
- UL 844 Hazardous Location
 - Class I, Division 2 Groups A, B, C, D
 - Class I, Zone 2 Group IIC
 - T3A - 180°C maximum surface temperature
- CSA C22.2 No. 250.0
- CSA C22.2 No. 137

CE

ABS

IP67 rated

LM79 and LM80 reports available

Buy American Act (BAA)

Build America Buy America Act (BABA)

Specifications

Construction	Marine grade, extruded aluminum housing Marine grade, die cast aluminum end plates
Finish	Anodized finish on extruded parts Thermoset powder coat paint on die cast parts
Hardware	Marine grade (316) stainless steel



This product complies with domestic preference requirements such as BABA. For additional information, visit phoenixlighting.com or consult your representative.



This product complies with domestic preference requirements such as BAA or TAA. For additional information, visit phoenixlighting.com or consult your representative.

For IES files, see website or contact factory

Specifications

Lens	Diffuse polycarbonate (DP) - standard
Light source	HDL1 - up to 3150 lumens, 28W HDL2 - up to 6300 lumens, 55W HDL3 - up to 9400 lumens, 84W CCT 5000K LEDs - standard 50,000 hour rated life
Power source	120-277V, 50-60Hz (UNIV) 277-480V, 50-60Hz (277-480) 12-24V DC (DC) Fully potted, replaceable driver
Power factor	> 0.9 at 120V
Surge protection	20kV/kA
Wiring	Wire leads standard (connectors accept up to 12 AWG wire) ½ inch NPT outlets Threaded plug and two cord grips provided accept cord diameters 0.25-0.375 inch
Through wiring	Standard fixture is designed for continuous row mounting
EMB	Input power 120-277V, 50/60Hz 90 minute run time Approximately 1100 lumens 7 to 10 year battery life expectancy
Ambient operating temperature	-40°C to +50°C (non-EMB units) 0°C to +40°C (EMB units)
Mounting	Surface/ conduit mount (SM) - standard Adjustable mounting feet - standard Retrofit mounting brackets for Phoenix LFSB or RSL fixtures - sold separately Harp kit accessories - sold separately
Weight	HDL1 - 6.5 lb (3.0 kg) HDL2 - 11.0 lb (5.0 kg) HDL3 - 14.0 lb (6.4 kg)
Warranty	5 years

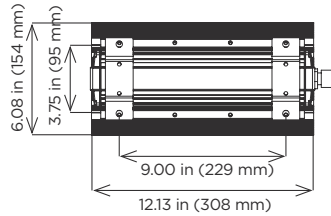
HDL-LED Series

Heavy Duty Linear LED

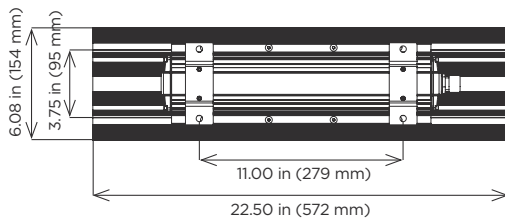
PHOENIX[®]
DURABILITY X DESIGN™

Dimensions

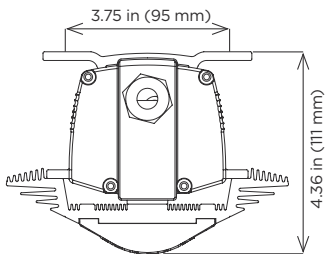
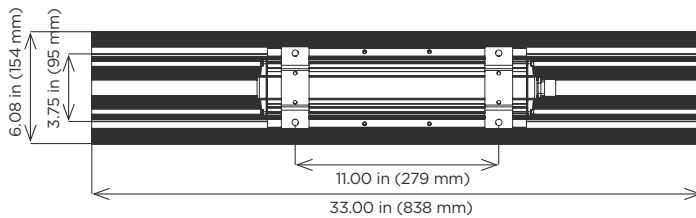
HDL1



HDL2



HDL3



HDL2s in an electrical control room

Ordering Information

Example: HDL-2-UNIV-DP-SM-V2

Fixture	Circuit Boards	Voltage	Lens	Mounting	Option	Generation
HDL	1 ³	UNIV	DP	SM	EMB ¹	V2 ²
	2	277-480 ³				
	3	DC ^{4,5}				

Circuit Boards

1 ³	One circuit board (3150 lumens)	UNIV	120-277V, 50-60Hz	DP	Diffuse polycarbonate
2	Two circuit boards (6300 lumens)	277-480 ³	277-480V, 50-60Hz		
3	Three circuit boards (9400 lumens)	DC ^{4,5}	12-24V DC		

Voltage

Lens

Mounting

Option

Generation

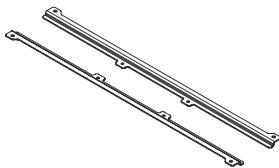
SM	Surface/conduit mount	EMB ¹	Emergency battery backup (90 minutes)	V2 ²	Version 2
----	-----------------------	------------------	---------------------------------------	-----------------	-----------

Notes

- 1 Certified to UL844 C1D2.
- 2 V2 standard on HDL-2. Not available on HDL-1 or HDL-3.
- 3 277-480V option not available on HDL-1.
- 4 Low voltage DC models do not have any certifications.
- 5 Only available on HDL-1.

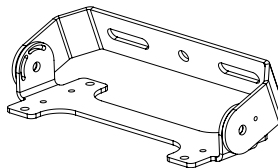
Special Projects: We may be able to accommodate your special projects, so please don't hesitate to ask about additional options. Minimum order quantities and/or extended lead times will apply. Contact your Phoenix representative with specific inquiries.

Accessories (order separately)



HDL Retrofit Bracket for LFSB/RSL fixtures

RFBKTHDL1-RSL
RFBKTHDL1-LFSB2 (LFSB 2 foot)
RFBKTHDL2/3-RSL
RFBKTHDL2/3-LFSB4 (LFSB 4 foot)



Harp Kits

KIT-HARP-HDL1 (HDL1)
KIT-HARP-HDL2/3 (HDL2 and HDL3)

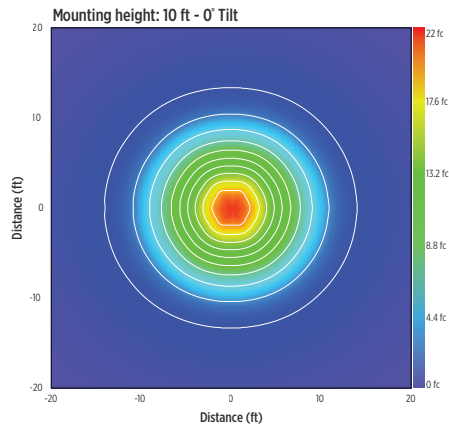
HDL-LED Series

Heavy Duty Linear LED

PHOENIX[®]
DURABILITY X DESIGN™

Isolux Charts

HDL2 UNIV-DP-SM (standard)



Product design and specifications are subject to change without notice. The most current version of this specification sheet can be found at www.phoenixlighting.com.