



PHOENIX[®]
DURABILITY X DESIGN™



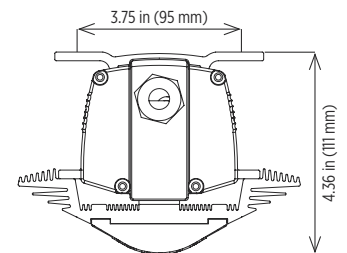
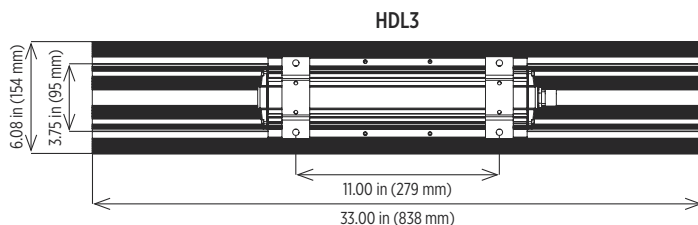
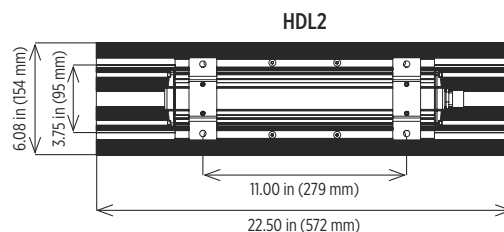
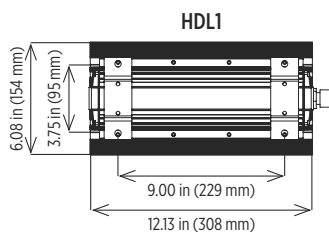
HDL-LED Series

Heavy Duty LED

US Design Patent No. D720,875

Designed to replace linear fluorescent fixtures and mid-power floodlights for use on heavy equipment, conveyors, machine houses and other demanding applications. Compact, low profile design with various output levels and mounting options. LED technology increases efficiency, eliminates maintenance and supports green initiatives.

Dimensions



HDL-LED Series

Heavy Duty LED

PHOENIX[®]
DURABILITY X DESIGN™

Specifications

Construction	Marine grade, extruded aluminum housing Marine grade, die cast aluminum end plates
Finish	Anodized finish on extruded parts Thermoset powder coat paint on die cast parts
Hardware	Marine grade (316) stainless steel
Lens	Diffuse polycarbonate (DP) - standard Clear polycarbonate lens (CP) accessory kit available
Light source	Light emitting diodes (LED) HDL1 - 28W, 2850 lumens HDL2 - 55W, 5700 lumens HDL3 - 83W, 8550 lumens CCT 5000K 50,000 hour rated life
Power source	120-277V, 50-60Hz (UNIV) - standard Fully potted Replaceable
Power factor	> 0.9 at 120V
Surge protection	20kV/kA
Wiring	Wire leads standard (connectors accept up to 12 AWG wire) 5 foot lead with 277V twist lock plug (TL-277) accessory available
Through wiring	Standard fixture is designed for continuous row mounting
EMB	Input power 120-277V, 50/60Hz 90 minute run time Approximately 1100 lumens 7 to 10 year battery life expectancy
Ambient operating temperature	-40°C to +50°C (non-EMB units) 0°C to +40°C (EMB units)
Mounting	Threaded plug and two cord grips provided accept cord diameters 0.25-0.375 inch Surface/conduit mount (SM) with ½ inch NPT outlets - standard Retrofit mounting brackets for Phoenix LFSB or RSL fixtures - sold separately Harp kits sold separately
Weight	HDL1 - 6.5 lb (3.0 kg) HDL2 - 11.0 lb (5.0 kg) HDL3 - 14.0 lb (6.4 kg)
Warranty	5 years

For IES files, see website or contact factory

Compliances

ETL/cETL Certified to:

- UL 1598 Suitable for Wet Locations
- UL 1598A Marine Outside Type (Saltwater)
- UL 844 Hazardous Location
Class I, Division 2 Groups A, B, C, D
Class I, Zone 2 Group IIC
T3C - 160°C maximum surface temperature
- CSA C22.2 No. 250.0
- CSA C22.2 No. 137

CE

ABS

IP67 rated

LM79 and LM80 reports available



HDL2s in an electrical control room



Ordering Information

Standard Unit: HDL-2-UNIV-DP-SM

Fixture	Circuit Boards	Voltage	Lens ²	Mounting	Option	Generation
HDL	1	UNIV	DP	SM	EMB ¹	V2 ³
	2					
	3					

Circuit Boards

- 1 One circuit board (2850 lumens)
- 2 Two circuit boards (5700 lumens)
- 3 Three circuit boards (8550 lumens)

Lens²

- DP Diffuse polycarbonate

Option

- EMB¹ Emergency battery backup

Generation

- V2³ Version 2

Voltage

- UNIV 120-277V, 50-60Hz

Mounting

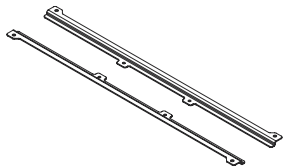
- SM Surface/conduit mount

Notes

- 1 Not ETL/cETL Listed
- 2 Additional lens options sold separately. See accessories below.
- 3 V2 standard on HDL-2. Not available on HDL-1 or HDL-3.

Special Projects: We may be able to accommodate your special projects, so please don't hesitate to ask about additional options. Minimum order quantities and/or extended lead times will apply. Contact your Phoenix representative with specific inquiries.

Accessories (order separately)

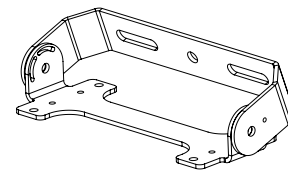


HDL Retrofit Bracket for LFSB/RSL fixtures

- RFBKTHDL1-RSL
- RFBKTHDL1-LFSB2 (LFSB 2 foot)
- RFBKTHDL2/3-RSL
- RFBKTHDL2/3-LFSB4 (LFSB 4 foot)

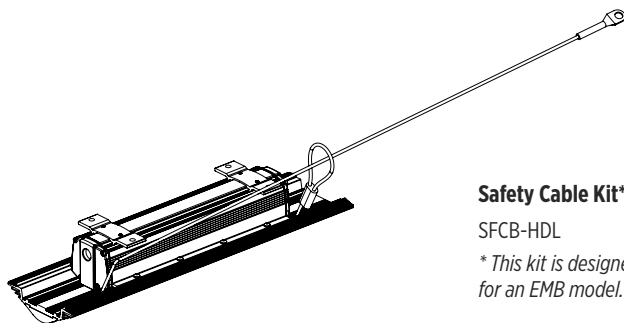
Lens Kits*

- HDL-CP Clear polycarbonate lens kit
- * Contact factory
- * Note: One lens kit is required per circuit board (i.e. an HDL2 requires two (2) lens kits).



Harp Kits

- KIT-HARP-HDL1 (HDL1)
- KIT-HARP-HDL2/3 (HDL2 and HDL3)



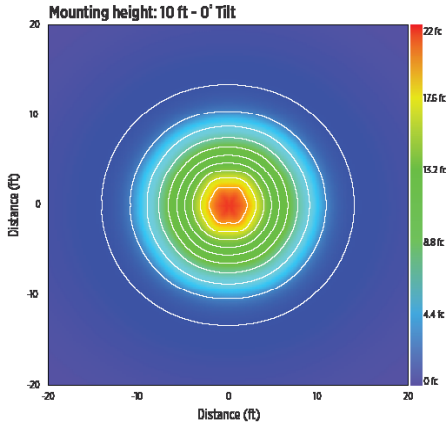
Safety Cable Kit*

- SFCB-HDL
- * This kit is designed to work with non-EMB models only. Contact factory if a safety cable is required for an EMB model.

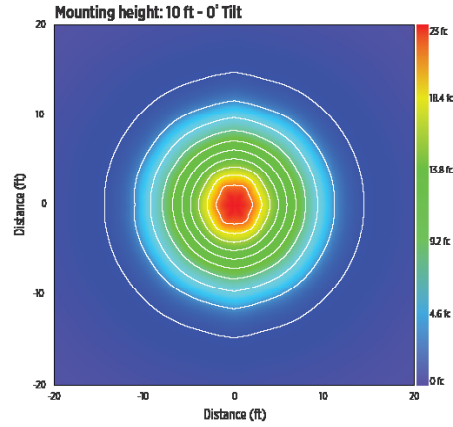


Photometrics

HDL2 UNIV-DP-SM (standard)



HDL-2-UNIV-CP-SM (accessory)



Cover photo: HDL2s installed in a machine house

Product design and specifications are subject to change without notice. The most current version of this specification sheet can be found on our website: www.phoenixlighting.com.