

**Recessed Downlight LED**

Marine indoor recessed LED downlight for shallow ceiling and overhead applications.

Durable, marine grade components offer resistance against corrosion and high vibration.

**Key Applications**

Marine Interior  
Commercial Fishing Vessels  
Tug, Tow and Push Boats  
Dredges and Work Barges  
Military Service Vessels  
Offshore Supply Vessels  
Ferries, Passenger and Research Vessels  
Super Yachts

**Compliances**

ETL/cETL Certified to:

- UL 1598A
- FCC Part 15 Class A
- ABS
- IP20
- IP44 (with sealed lens and trim cover)

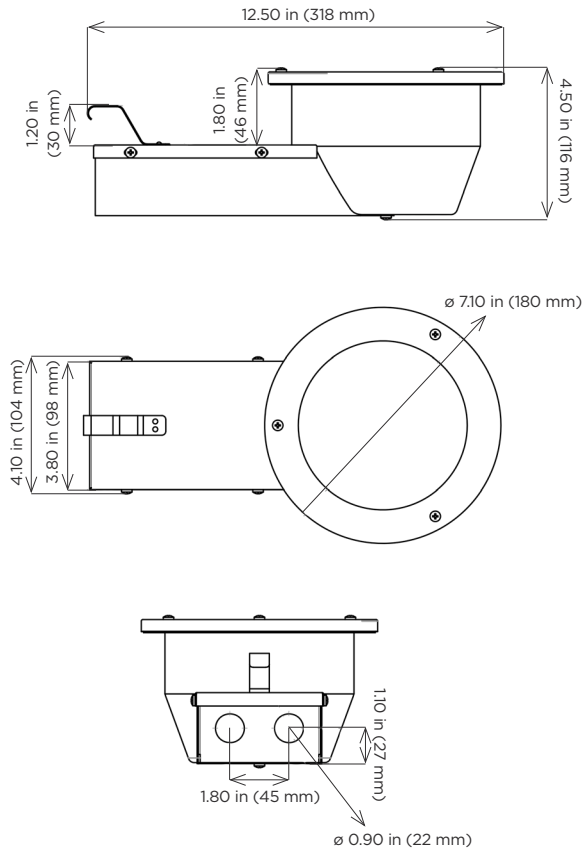
**Specifications**

<b>Construction</b>	Corrosion-resistant aluminum enclosure
<b>Finish</b>	White polyester powder coat
<b>Hardware</b>	Marine grade (316) stainless steel
<b>Lens</b>	Clear - up to 1350 lumens Diffuse - up to 1150 lumens Red - up to 150 lumens
<b>Light source</b>	High-Brightness LED, >85 CRI CCT: Neutral white (4000K)
<b>Driver</b>	AC 120-277V 50/60Hz 0-10V dimmable
<b>Power</b>	12.5W
<b>Power factor</b>	> 0.9
<b>THD</b>	< 15%
<b>Ceiling Hole Size</b>	146mm
<b>Ambient operating temperature</b>	-20°C to +45°C
<b>Operating lifetime</b>	50,000 hours
<b>Wiring</b>	Two 1/2 inch and two 3/4 inch NPT knockouts
<b>Dimensions</b>	12.50 in (318 mm) x 4.10 in (104 mm) x 4.50 in (116 mm)
<b>Weight</b>	2.9 lb (1.3 kg)
<b>Warranty</b>	5 years

For IES files, see website or contact factory

### Dimensions

#### RDL



### Ordering Information

**Example:** RDL-DF-AC-40K

Fixture	Lens	Voltage	Options
RDL	DF <sup>1</sup>	AC	40K

#### Lens

DF <sup>1</sup> Diffuse lens

#### Voltage

AC 120-277VAC

#### Options

40K 4000K, neutral white

#### Notes

- 1 Diffuse lens comes standard, other lenses available as field installable kits.

### Accessories (order separately)

#### Lenses

KIT, RDL-LNS-CL (clear)

KIT, RDL-LNS-RD (red)

#### Emergency Battery Backup

KIT, RDL-EMB-2HR (120 minute minimum run time)

**Special Projects:** We may be able to accommodate your special projects, so please don't hesitate to ask about additional options. Minimum order quantities and/or extended lead times will apply. Contact your Phoenix representative with specific inquiries.

Product design and specifications are subject to change without notice. The most current version of this specification sheet can be found at [www.phoenixlighting.com](http://www.phoenixlighting.com).