



Premium fixture enhances productivity, safety and security

Designed to withstand the world's harshest environments

500 model delivers up to 80,000 lumens and replaces 1000W HID fixtures

250 model delivers up to 40,000 lumens and replaces 400W HID fixtures

High efficacy lighting with greater than 140 lumens per watt

Key Applications

Large area high mast
Roadway high mast
Shipyard high mast
Container yard high mast
Hangar lighting
Aviation ramps and aprons
Prison large areas
Military bases
Industrial facilities

Compliances

CE
SAA AS/NZS 60598.2.5
IP66 (without twist-lock receptacle)

Specifications

Construction	High strength, AL5052 aluminum Built-in, adjustable visor (optional - GG)
Finish	Weather-resistant powder coat
Hardware	Marine grade stainless steel
Light source	Premium LED modules 250 model, up to 265W and 40,000 lumens 500 model, up to 530W and 80,000 lumens CCT: Cool white (5000K), neutral white (4000K), warm white (3000K) UV-resistant, polycarbonate lens
Lifetime	50,000 hours at up to 45°C 100,000 hours at up to 35°C
Power source	90 - 305 VAC, 50-60 Hz (120-240V) Waterproof to IP67 20kV/10kA surge protection
Power factor	> 0.9 at 277V
Ambient operating temperature	-40°C to +45°C
Mounting	Trunnion mount (standard); 5° indexed aiming Pipe mount (optional) accommodates DN 51 mm (60 mm OD)
Fixture weight	250 model - 14.1 kg (31 lb) 500 model - 17.9 kg (39.5 lb)
EPA (wind load)	250 model - 0.09 m ² (0.96 sq. ft.) 500 model - 0.11 m ² (1.21 sq. ft.)
Warranty	5 years

For IES files, see website or contact factory

Meridian Series

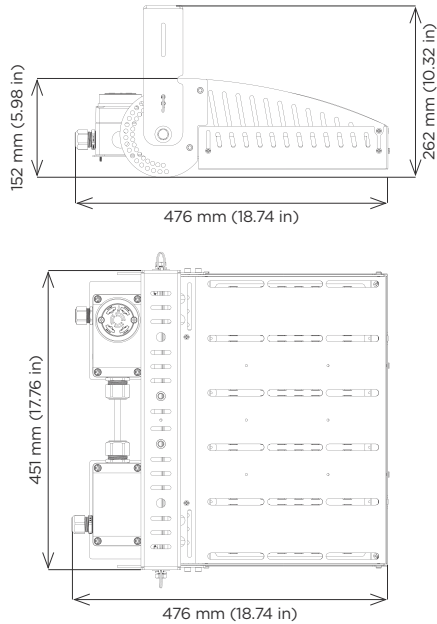
High Mast & Area LED Floodlight

PHOENIX[®]
DURABILITY X DESIGN™

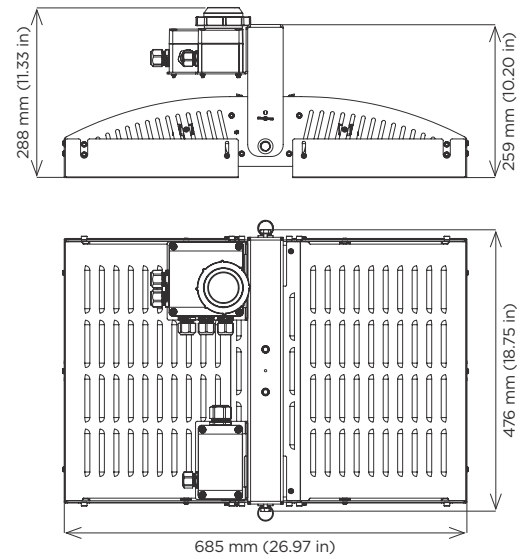
Dimensions

Note: Models shown with twist-lock receptacle option.

250 Model

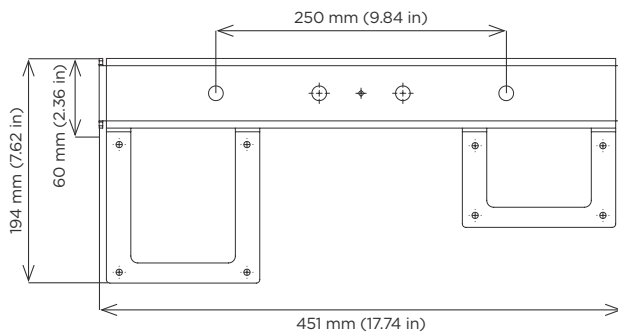


500 Model



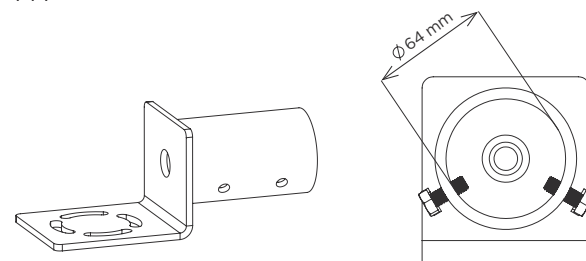
Mounting

Trunnion Mount (standard)



Pipe Mount Kit

PM



Ordering Information

Example: MER-250-LT-120-240-NW-PM¹

Fixture	Model	Optic	Voltage	CCT ²	Options
MER	250	LV	120-240 ³	CW	PM
	500	LX		NW	GG
				WW	TR ^{1, 4, 5}

Model		Optic		Voltage		CCT ²	
250	Up to 265W and 40,000 lumens	LV	Type IV	120-240 ³	120-240V, 50-60Hz	CW	Cool white LEDs (5000K)
500	Up to 530W and 80,000 lumens	LX	Type V			NW	Neutral white LEDs (4000K)
						WW	Warm white LEDs (3000K)

Options

PM	Pipe mount, accommodates DN 51 mm (60 mm OD)
GG	Glare guard
TR ^{1, 4, 5}	Twist-lock receptacle (required for Synapse® Lighting Controller)

Notes

- 1 TR comes standard with shorting cap
- 2 Additional color temperatures available upon request
- 3 Additional voltages available upon request
- 4 IP63 with control node receptacle
- 5 Dimming when using Synapse® TL7 Controller

Special Projects: We may be able to accommodate your special projects, so please don't hesitate to ask about additional options. Minimum order quantities and/or extended lead times will apply. Contact your Phoenix representative with specific inquiries.

Accessories (order separately)

Twist-lock Photocontrol

KIT, HM-PC-120 (120-277V)

KIT, HM-PC-480 (480V only)

Synapse® Twist-lock Lighting Controller

SYN-TL7-HVG (120-480V)

Meridian Series

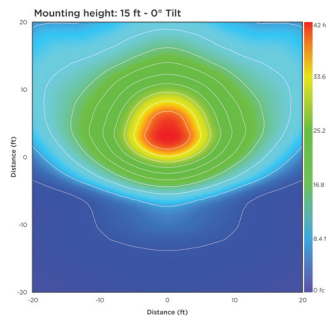
High Mast & Area LED Floodlight

PHOENIX[®]
DURABILITY X DESIGN™

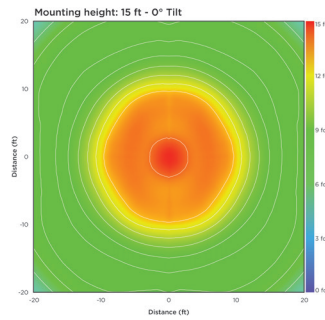
Isolux Charts

Charts shown reflect cool white LEDs.

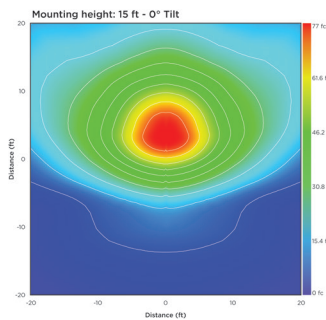
Meridian 250 - LV



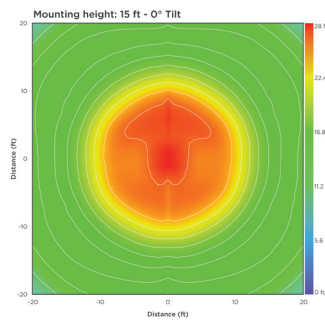
Meridian 250 - LX



Meridian 500 - LV



Meridian 500 - LX



Product design and specifications are subject to change without notice. The most current version of this specification sheet can be found at www.phoenixlighting.com.