

! CAUTION

- All wiring should be done by a licensed electrician in accordance with state codes, local codes, and National Electric Code (NEC) standards or International Electric Commission (IEC) standards.
- Improper installation may result in serious injury and void warranty.
- Contains parts and assemblies susceptible to damage by electrostatic discharge (ESD).
- When using luminaires, basic safety precautions should always be followed to reduce the risk of fire, electric shock and personal injury.
- Surge protective devices should be utilized for fixtures installed in environments subject to power surges outside the specified operating parameters.

Installation

1. Identify the desired mounting location for the fixture. Note that the Cube-Light can be mounted in any orientation.
2. The fixture should be mounted using the flush mount brackets (Item 8), and M6 or ¼ inch screws and lockwashers (not provided).
3. Electrical connections should be made by a licensed electrician. When wiring the fixture, please refer to wiring instructions below.

Wiring (when power cord is provided)

If fixture is provided with power cord, mount fixture as instructed above, and connect cord to supply line in watertight junction box. Connect the wires: black to line, white to neutral, green to ground.

Wiring (when power cord is not provided)

If fixture is provided without a cord, open back cover of fixture to access wiring compartment. Install cord(s) through cord grips provided. Cord grips accept cord of diameter 0.25 inches (6.35 mm) to 0.375 inches (9.5 mm). Tighten cord grip to cord, hand tight plus ¼ turn. Connect the wires: brown to line, blue to neutral, yellow/green to ground. Neatly tuck driver, wires and connectors into wiring compartment (as shown in Figure 1). **Note:** Driver orientation is critical (refer to label on driver). Replace cover and gasket and attach with four screws. Tighten screws to 6 pound-inch following number pattern in Figure 2. Mount fixture as instructed above.

Figure 1



Figure 2



Universal Cube-Light

Installation Instructions

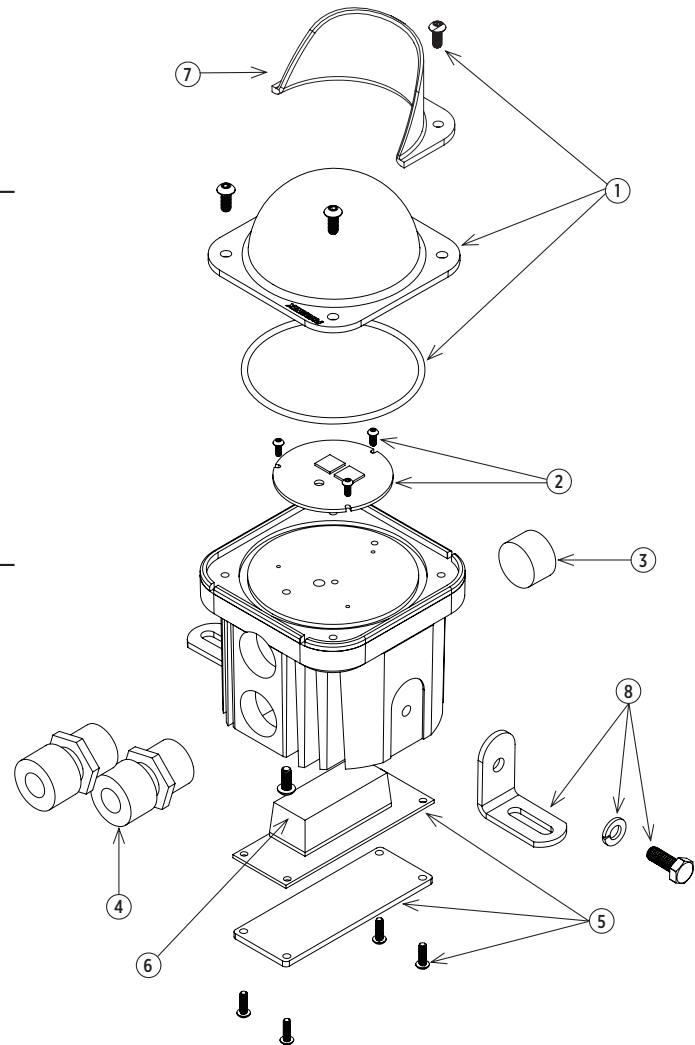
PHOENIX[®]
DURABILITY X DESIGN™

Cord Grip Installation

To ensure a proper seal when installing a new cord grip or plug into the housing, it should be torqued to 80-90 inch-pounds. When installing additional cord grips or plugs, thread sealing tape or paste is required.

Repair Parts List

Item	Part Number	Description
1	000082.900	lens kit
2	0000.82.911	LED board kit
3	7537800	plug
4	4035068 4035065	½ inch NPT cord grip (0.25-0.38 inch cord OD) ½ inch NPT cord grip (0.38-0.50 inch cord OD)
5	000082.902	back cover plate kit
6	000082.912	driver board kit
7	000082.906	visor kit
8	000082.904	flush mounting kit



Fixture weight: 2.0 lb (0.9 kg)

Fixture dimensions: 3.50 in (89 mm) x 3.50 in (89 mm) x 4.20 in (107 mm)

Maintenance

Periodic maintenance and cleaning is required to keep light fixture in peak operating condition. Buildup of dirt and/or debris will diminish performance, lead to premature failure and void the fixture's warranty.

1. Inspect fixture monthly or (more frequently if conditions require) for dirt and debris buildup on lens and between fins of heatsink. Wash down with water as needed.
2. Inspect fasteners and verify cord grips are tight. Retighten as needed.
Note: Cord grips should be hand tight plus ¼ turn.

Product design and specifications are subject to change without notice.