

## STS, RTG and Mobile Crane Lighting

### EcoMod<sup>®</sup> 3 Series Heavy Duty LED Floodlight

Expertly engineered with durable, marine grade components and various optic options



ETL/cETL Certified to:

- UL 1598 Suitable for Wet Locations
- UL 1598A Marine (Saltwater)
- UL 844 Hazardous Locations

CE, IP66, ABS

EM3-LO 121W - 15,000 lumens

EM3-HI 231W - 30,000 lumens

EM3-MAX 438W - 52,500 lumens

### Command Flood<sup>®</sup> Series LED Floodlight

Rugged design to withstand moisture and corrosion in marine and industrial installations



ETL/cETL Certified to:

- UL 1598 Suitable for Wet Locations
- UL 1598A Marine (Saltwater)

CE, IP66, ABS

CF-150, 145W, 18,500 lumens

CF-250, 240W - 32,000 lumens

CF-375, 360W - 48,000 lumens

## High Mast & Yard Lighting

### Soar<sup>™</sup> Series High Mast & Large Area LED

EPA 1.69sq.ft  
120-277V and 277-480V



UL/cUL Certified to:

- UL 1598 Suitable for Wet Locations

CE, IP66, ROHS

960W - 130,000 lumens

5700K, 5000K, 4000K

Type 4 & Type 5 Field Rotatable Optics

+/-5° tilt

### Highland Series High Mast & Area LED Floodlight

Narrow spot, medium spot, wide spot,  
Type II, Type IV Type V optics  
Trunnion or 2.0" slipfitter mount



UL/cUL Listed to:

- UL 1598 Suitable for Wet Locations
- UL 8750 for LED Equipment

International Dark Sky Association approved (WW options)

IP66 (without twist-lock receptacle)

250 model - 265W - 40,000 lumens

500 model - 530W - 80,000 lumens

3000K, 4000K, 5000K

120-277V, 277-480V

### Apex<sup>™</sup> Series High Mast LED Floodlight



UL/cUL Listed to:

- UL 1598 Suitable for Wet Locations

IP66

IK08

FCC Part 15 Class A

CE

APEX-600 - 600W, 85,000 lumens

APEX-1000 - 1000W, 138,000 lumens

120-277V, 277-480V, 50/60Hz

3000K, 4000K, 5000K, 5700K

10° NEMA 2x2, 30° NEMA 4x4, 60° NEMA 6x6 Optics

# General Lighting

## Wayfinder™ 2 LED Accessway Light

Integrated EMB option (pending)  
Pathway/walkway/overdoor light



UL/cUL Listed to:

- UL 1598 Suitable for Wet Locations
- UL 924 EMB option (pending)

ABS (pending)

IP66

DLC

3.2W - 11W (field adjustable output), up to 1300 lumens

SubM compliant 2-HR EMB and 6-HR EMB options

Colored (red, green, blue) and diffused lens options

## HDL-LED Series

90-minute run time EMB



ETL/cETL Certified to:

- UL 1598 Suitable for Wet Locations
- UL 1598A Marine (Saltwater)
- UL 844 Hazardous Locations

Class I, Division 2 Groups A, B, C, D

Class I, Zone 2 Group IIC

T3C, 160°C maximum surface temperature

CE, ABS, IP67 rated

HDL1 - 28W, 2850 lumens

HDL2 - 55W, 5700 lumens

HDL3 - 83W, 8550 lumens

120-277V, 277-480V

## Cube-Light Compact LED Area Light

Wall (bulkhead) mount  
Ceiling mount



ETL/cETL Listed to:

- UL 1598 Wet Locations
- UL 1598A Marine (Saltwater)

CE, ABS, IP66 rated

Impact-resistant, polycarbonate

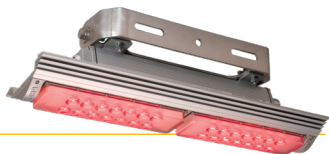
Red, green, blue and amber

13W, 1000 lumens

Conformal coated

## Danger Light™ Heavy Duty LED

Red and Green LED options



ETL/cETL Certified to:

- UL 1598 Suitable for Wet Locations
- UL 1598A Marine Saltwater
- CSA C22.2 No. 250.0

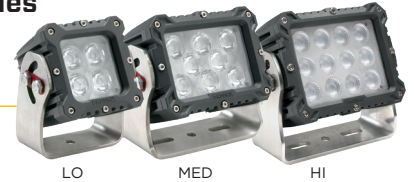
CE, IP66

DNG1 - Red 1900 lumens, Green 2050 lumens

DNG2 - Red 3800 lumens, Green 4100 lumens

## Sturdilite® Master Series

Amber and RED LEDs available  
No-Glare optic option



CE

IP68

IP69K

IK06 (glass)

IK10 (polycarbonate)

HI - 64W, 7600 lumens

MED - 48W, 5000 lumens

LO - 24W, 2500 lumens

12-48V DC; 24-48V DC

Spot (SP), Flood (FL), Elliptical (EP), and No-Glare (NG) optical patterns

## ReadiLED™ Series

90-minute run time EMB available  
on 4-foot model



UL/cUL Listed to:

- UL 1598 Suitable for Wet Locations
- UL 1598C LED Retrofit Conversion (retrofit kits only)
- UL 1598A Marine (Saltwater)
- UL 924 Emergency Lighting Equipment

ABS, IP65, CE

2 foot - 40W, up to 4200 lumens

4 foot - 80W, up to 8400 lumens

120-277V, 50/60Hz

## Midline™ Flood 2

Made to withstand moisture, shock and vibration  
of marine environments



Available in medium flood or wide flood optic options

Available with a 360° adjustable, stainless steel bracket and hardware

UL/cUL Certified to:

- UL 1598 Suitable for Wet Locations
- UL 1598A Marine Outside Type (Saltwater)
- CSA C22.2 No. 250.0

CE, IP66, IK08, ABS (pending)

FCC Part 15, Subpart B, Class A standards for conduct and radiated emissions.

RoHS compliant

Up to 90W - 7000, 9000, 12000 lumens

5000K

120-347V

High Mast poles, lowering rings, motors and accessories available. Please ask us!