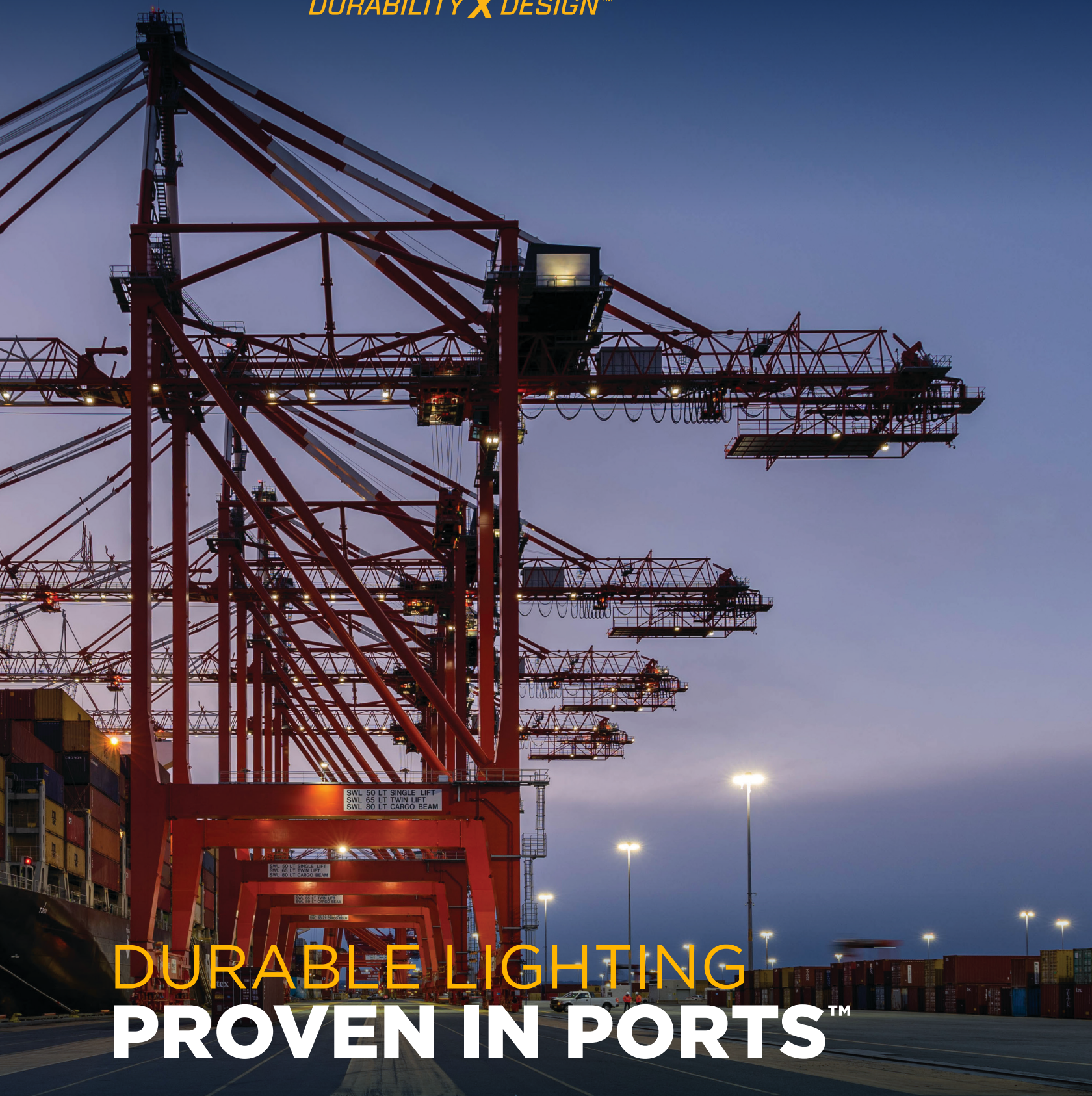


# PHOENIX<sup>®</sup>

DURABILITY X DESIGN<sup>™</sup>



DURABLE LIGHTING  
PROVEN IN PORTS<sup>™</sup>



## Every day, with every light, and for every project ...

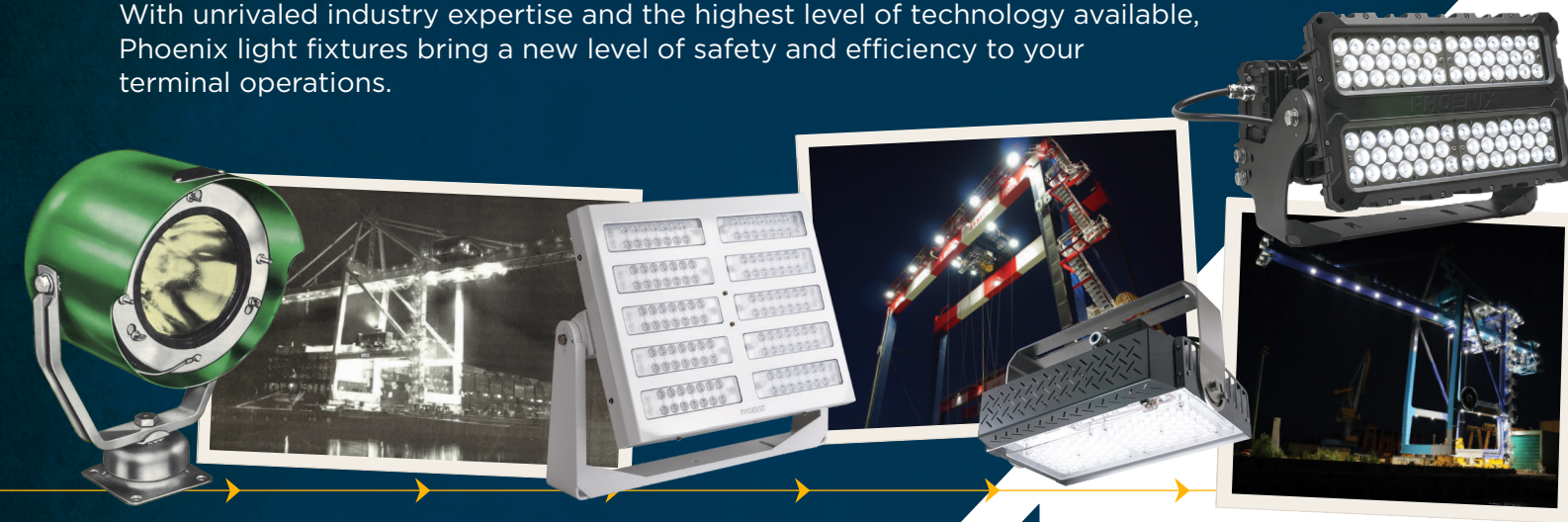
... we are committed to durability. As we design, engineer and manufacture our products for the terminal industry, we are constantly thinking about crane operators and what they need to do their jobs safely and effectively.



## Every night, at ports around the world,

operators depend on Phoenix lights. From the first light we built in 1943 to the LED fixture that was installed last week, our product line has been a sequence of innovations inspired by terminals worldwide and their evolving needs.

With unrivaled industry expertise and the highest level of technology available, Phoenix light fixtures bring a new level of safety and efficiency to your terminal operations.



## Phoenix Lighting BY THE NUMBERS

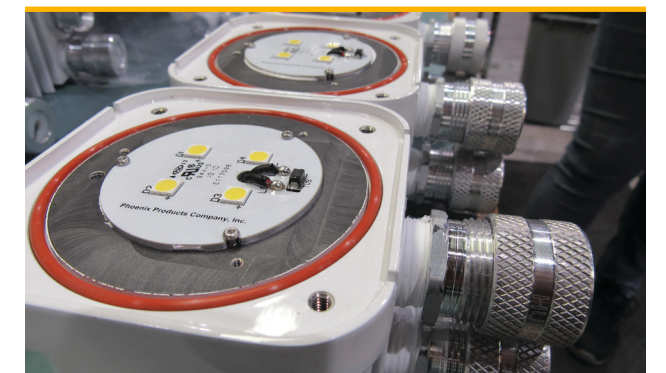
Just a few of the reasons  
you can count on Phoenix.

<b>6</b>	continents with Phoenix terminal lighting
<b>29</b>	years serving the port industry
<b>78</b>	years manufacturing lights
<b>129</b>	years in business
<b>&gt;500,000</b>	LED fixtures installed

## Our fixtures have been tested and proven ...

... in the most extreme conditions for over 78 years. We use measures like potted drivers, high quality finishes and marine grade components to ensure our fixtures thrive in the port environment and last longer than any other option.

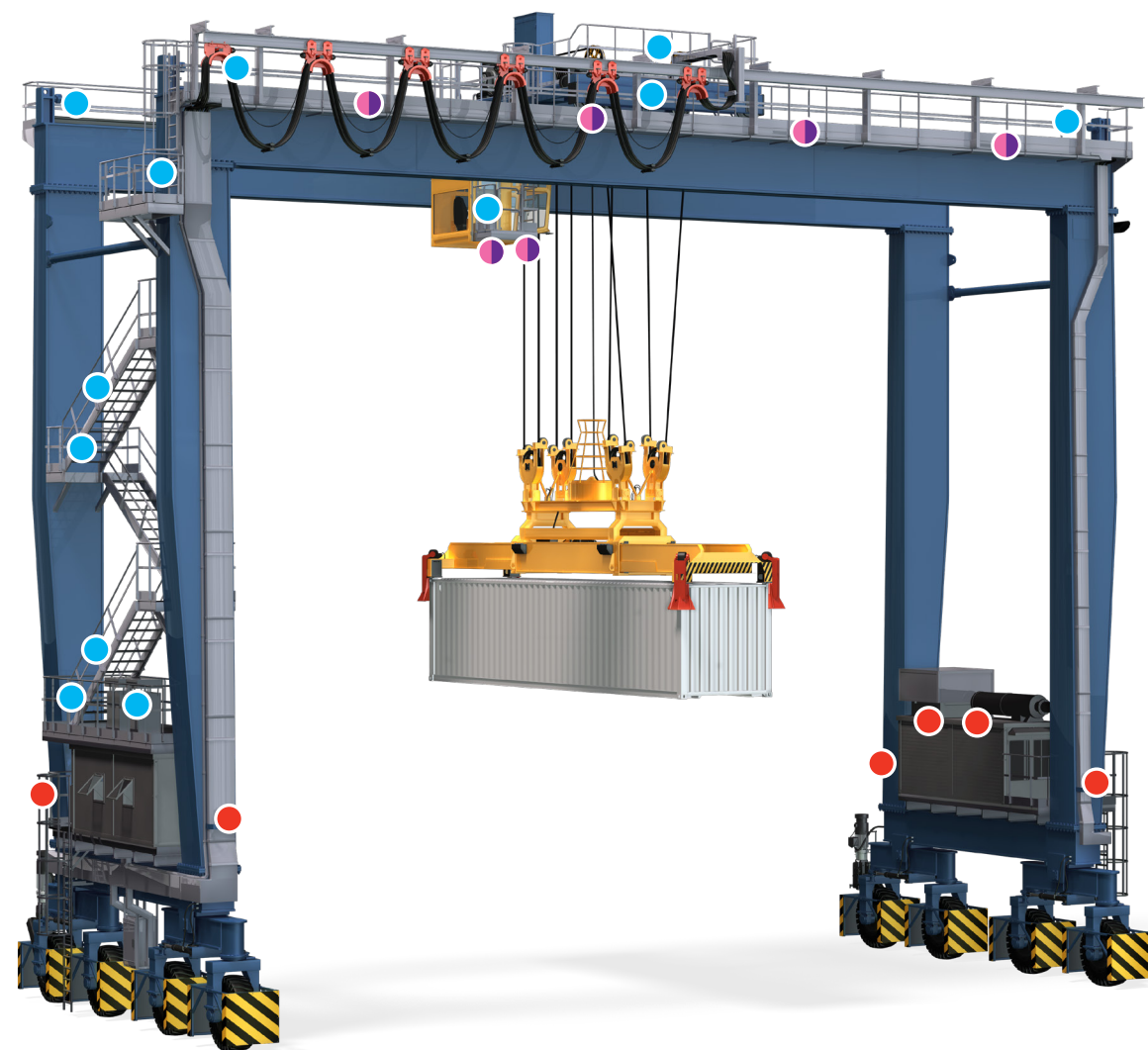
We test our fixtures by exposing them to the harsh conditions they are designed for – high vibration, extreme moisture, salt spray ... Phoenix sends every fixture out the door with the confidence that it will stand up to the rigors of the crane and the corrosion of the environment.





## RTG Cranes

Operators choose Phoenix for their RTG cranes because they need the highest level of durability along with uniform, consistent light. When these two factors are optimized, so is productivity and safety.



### EcoMod® 3 Series

Girders, trolley, gantry  
pg. 8, UL listed fixture



### Wayfinder™

Accessways, stairways  
pg. 8



### Midline™ Flood

Gantry, truck lane  
pg. 8



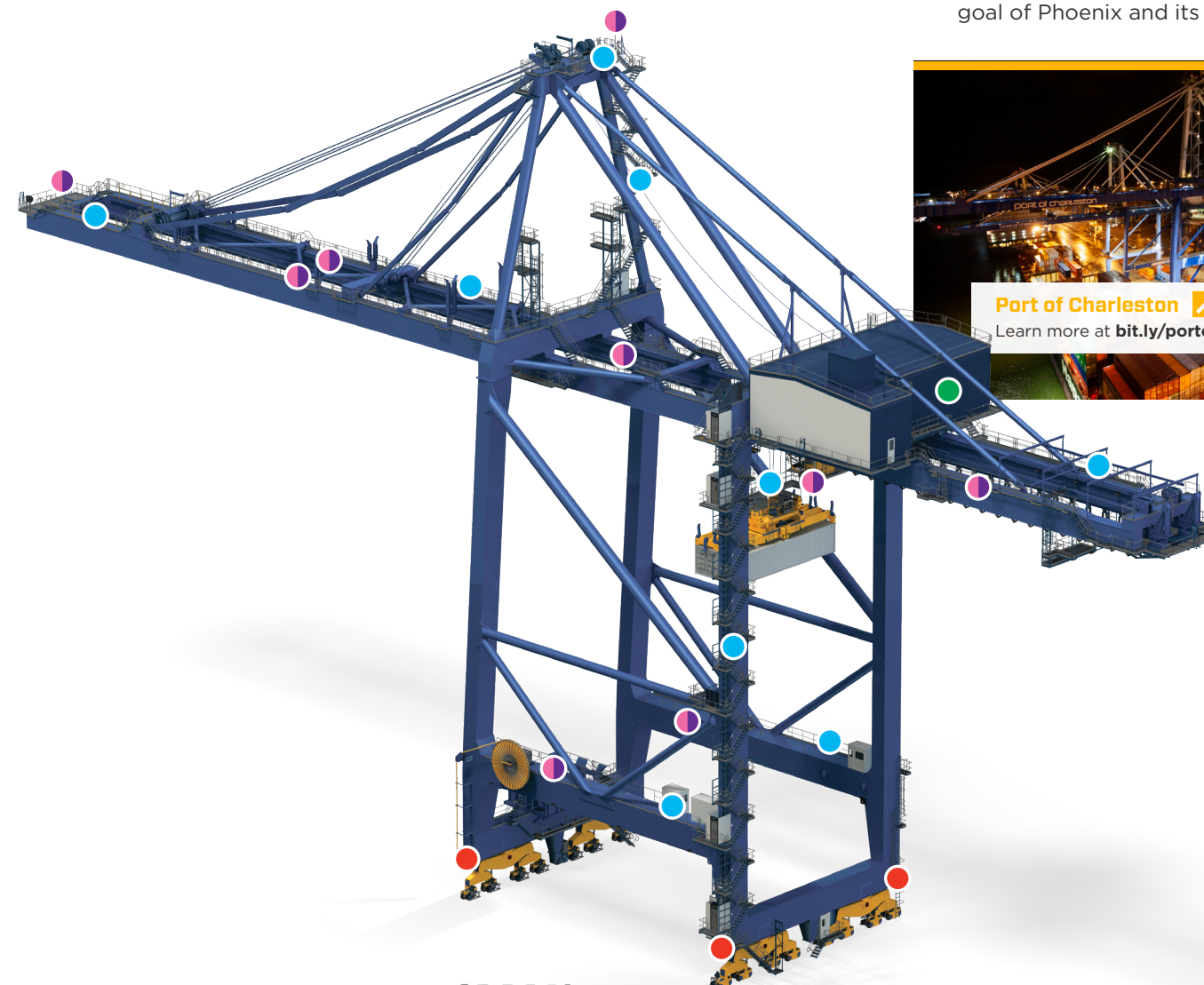
### Port Command Flood® Series

Girders, trolley, gantry  
pg. 8, CE compliant fixture



## STS Cranes

Phoenix has been working with terminals to deliver quality illumination to STS cranes for decades. Enabling operators to effectively see what's happening under them will optimize productivity and maintain the highest of safety standards. This has always been a joint goal of Phoenix and its customers.



### EcoMod® 3 Series

Boom, girders, trolley, portal beams, gantry  
pg. 8, UL listed fixture



### Wayfinder™

Accessways, stairways  
pg. 8



### Midline™ Flood

Gantry  
pg. 8



### Port Command Flood® Series

Boom, girders, trolley, portal beams, gantry  
pg. 8, CE compliant fixture



### HDL-LED Series

Machinery house, electrical room  
pg. 8



## Mobile Harbor Cranes

Extreme shock and vibration cause premature failure of lights on mobile harbor cranes, leading to lost time and increased safety risks. Phoenix lights are designed to endure these conditions so operations can continue at all hours. And with superior illumination, crane operators are more productive, and everyone is safer.



### EcoMod® 3 Series

Girders, trolley, gantry  
pg. 8, UL listed fixture



### Wayfinder™

Accessways, stairways,  
engine room  
pg. 8



## Mobile Equipment

The punishing work of a reach stacker needs lighting that can take a hit. With consistent light and exacting standards of durability, terminals are choosing Phoenix for their mobile equipment to keep productivity and safety high and maintenance at a minimum.



### Sturdilite® Master Series

Driving, side and back lights  
pg. 8



### Sturdilite® Move Series

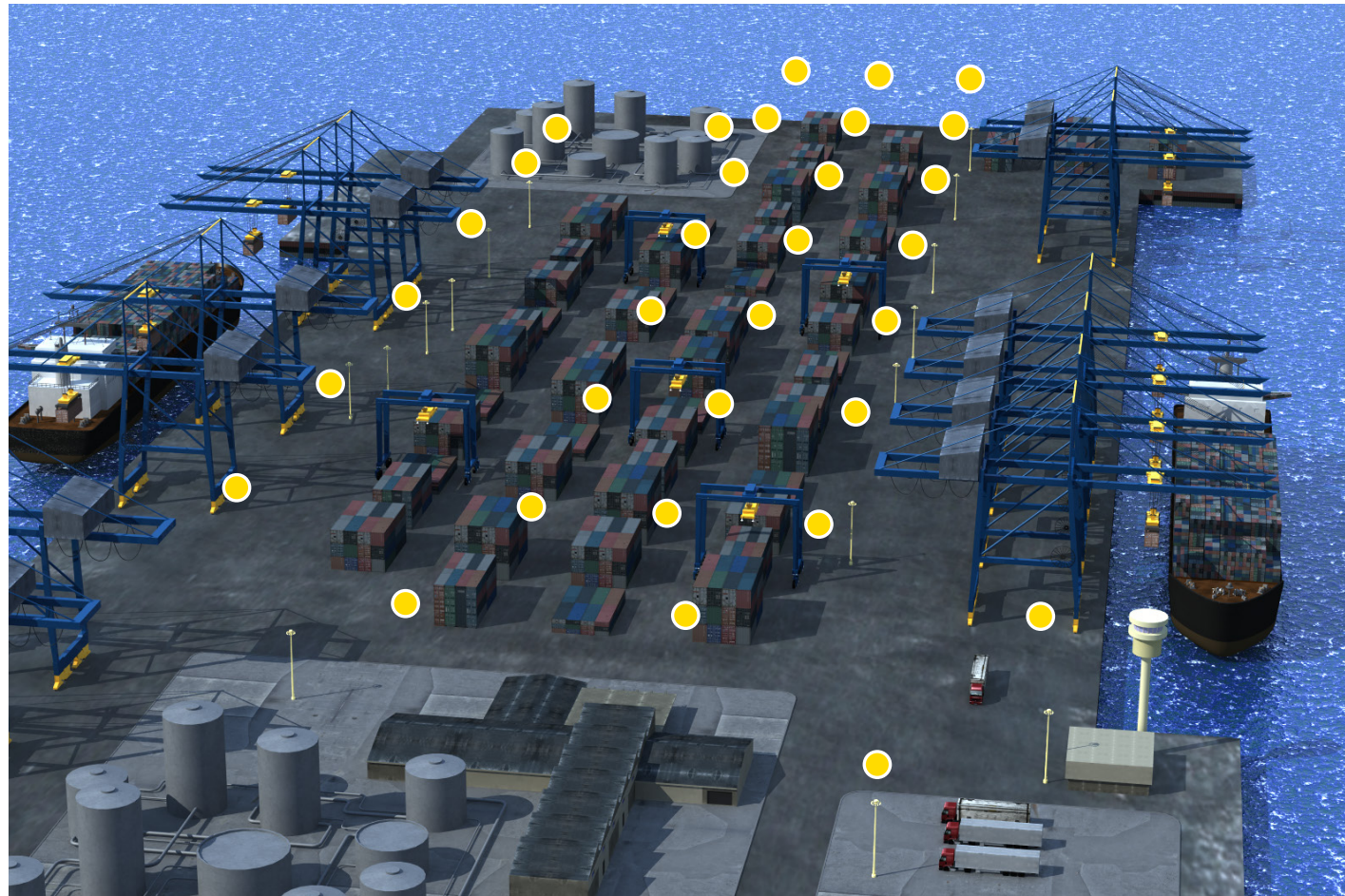
Driving, side and back lights  
pg. 8





## Container Yards

Phoenix Lighting maximizes security and safety with superior fixtures and advanced lighting control systems. This specialized solution brings a new level of operational efficiency and asset management to container yards worldwide.



### Soar™ Series

High mast poles in container yard  
pg. 7, UL listed & CE compliant fixture



### Meridian Series

High mast poles in container yard  
pg. 7, CE compliant fixture



### Highland® Series

High mast poles in container yard  
pg. 7, UL listed fixture



### CLIR™ Series

High mast poles in container yard  
pg. 7



## High Mast Floodlights & Controls

### Highland® Series High Mast & Area LED Floodlight



**Wattage** up to 265W or 530W  
**Lumens** up to 40,000 or 80,000  
**Warranty** 5 years



### Soar™ Series High Mast & Large Area LED



**Wattage** 960W  
**Lumens** up to 130,000  
**Warranty** 5 years



### Meridian Series High Mast & Area LED Floodlight



**Wattage** up to 265W or 530W  
**Lumens** up to 40,000 or 80,000  
**Warranty** 5 years



### CLIR™ Series High Performance LED Large Area Floodlight



**Wattage** 630W  
**Lumens** 85,000  
**Warranty** 5 years



### LIT System™ Lighting Intelligence Technology

- maximize fixture life
- save up to 35% energy
- meet unique port safety requirements

**Gateway** transmits control commands and energy usage data; controls up to 250 lights

**Wireless Controller** communicates via wireless mesh network; ANSI C136.41 compliant dimming interface

**Web-based** software allows easy remote monitoring and control with zoning and scheduling capabilities

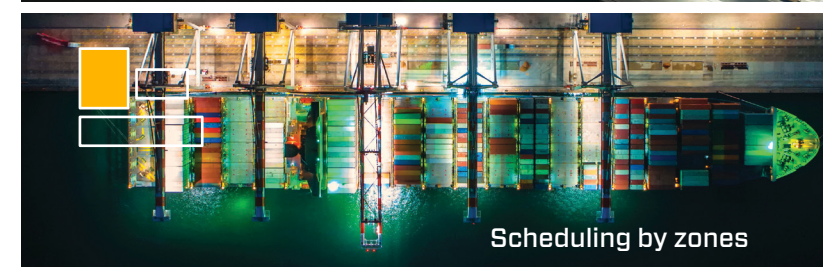
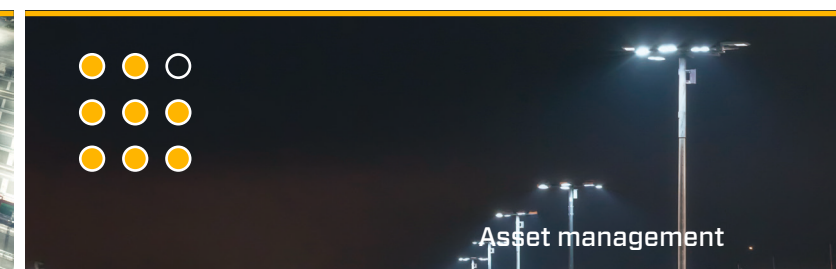
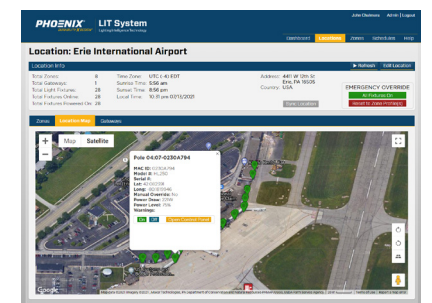
**Integration** works with Phoenix's Highland® and Meridian Series LED floodlights  
**Warranty** 3 years



Wireless Controller



Gateway





## Equipment Lighting

### EcoMod® 3 Series Heavy Duty LED Floodlight

Patents pending



**Wattage** up to 121W, 231W (pictured) or 438W  
**Lumens** up to 15,000, 30,000, or 52,500  
**Warranty** 5 years

### Midline™ Flood Marine Industrial LED Floodlight



**Wattage** 78W  
**Lumens** up to 9200  
**Warranty** 5 years

### Port Command Flood® Series Marine Grade Crane Floodlight



**Wattage** 120W, 240W (pictured) or 360W  
**Lumens** up to 15,300, 32,000 or 48,000  
**Warranty** 5 years

### ReadiLED™ Series LED Snaplight® and Retrofit Kit



**Wattage** 19W (pictured) or 38W  
**Lumens** 1975 or 3617  
**Warranty** 3 years

### Sturdilite® Master Series Low-voltage LED Floodlight



**Wattage** up to 24W, 48W or 82W  
**Lumens** up to 2500, 5000 or 7600  
**Warranty** 3 years

### Sturdilite® Move Series Low-voltage LED Floodlight



**Wattage** 19W, 40W or 64W  
**Lumens** up to 2000, 5000 or 7000  
**Warranty** 1 year

### HDL-LED Series Heavy Duty LED

US Design Patent No. D720,875



**Wattage** 28W, 55W (pictured) or 83W  
**Lumens** 2850, 5700 or 8550  
**Warranty** 5 years

### CVO LED Conveyor Belt Light



**Wattage** 50W  
**Lumens** up to 6500  
**Warranty** 3 years

### Wayfinder™ LED Accessway Light

Patent pending  
 Integrated EMB option



**Wattage** 9W  
**Lumens** up to 1100  
**Warranty** 5 years



Rail Mounted Gantry Crane, Intermodal Terminal  
Chicago, IL, USA





**PHOENIX<sup>®</sup>**  
**DURABILITY X DESIGN™**

Phoenix Lighting 8711 West Port Avenue Milwaukee, WI 53224 USA  
Phone: +1 414.973.3300 Email: [ports@phoenixlighting.com](mailto:ports@phoenixlighting.com) [www.phoenixlighting.com/ports](http://www.phoenixlighting.com/ports)

N5610157E 03.24.23