



SLXP LED

Portable Explosion-proof LED Floodlight

Explosion-proof portable LED floodlight rated for hazardous and wet locations

For use in chemical plants, drilling rigs, refineries and other hazardous locations

LED technology increases efficiency, eliminates maintenance and supports green initiatives

Key Applications

Chemical plants
Drilling rigs
Refineries
Grain processing and storage facilities
Wastewater treatment plants
Power plants
Fuel depots
Food and beverage processing facilities

Compliances

ETL/cETL Certified to:

- UL 1598 Ordinary Locations
- UL 1598A Marine Outside Type (Saltwater)
- UL 844 Suitable for Hazardous Locations
 - Class I, Division 1 Groups C & D
 - Class I, Division 2 Groups A, B, C & D
 - Class II, Divisions 1 & 2 Groups F & G
 - Class III, Divisions 1 & 2
 - T4A (120°C) Temperature Rating
- CSA C22.2 No. 250.0, 94.0, 213.0, 137.0, 30.0

NEMA 4X

Buy American Act (BAA)

Build America Buy America Act (BABA)

Specifications

Construction	Marine grade cast aluminum shell, cover and sealed fittings Marine grade wrought aluminum handle bracket Threaded joints are lubricated with non-drying petrolatum
Finish	Yellow thermoset powder coat
Hardware	Stainless steel
Lens	¾ inch thick tempered glass
Light source	Up to 4600 lumens, 44W Various optics available CCT 5000K 50,000 hour rated life
Power source	120-277V, 50-60Hz Fully potted, replaceable driver Over-voltage, over-current and short-circuit protection
Power factor	> 0.9
Wiring	Supplied with 50 feet of 16/3 type SOW cord Wire entrance is factory sealed
Mounting	Portable base has three holes Marine grade wrought aluminum base and harp
Ambient operating temperature	-20°C to +40°C
Weight	Fixture: 21.5 lb (9.8 kg) Packaged: 24.2 lb (11.0 kg)
Warranty	5 years



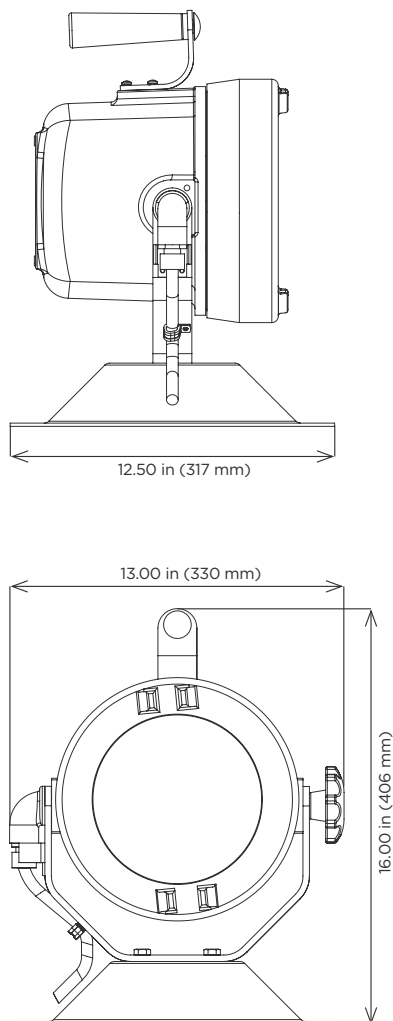
This product complies with domestic preference requirements such as BABA. For additional information, visit phoenixlighting.com or consult your representative.



This product complies with domestic preference requirements such as BAA or TAA. For additional information, visit phoenixlighting.com or consult your representative.

For IES files, see website or contact factory

Dimensions



Ordering Information

Example: SLXPLED-FL-V3

Fixture	Optics	Generation
SLXPLED	FL	V3
	SP	
	WS	
	VS	
	OV	

Optics

FL 55° flood optic
 SP 25° spot optic
 WS 35° wide spot optic
 VS 15° very narrow optic
 OV 45° x 15° oval optic

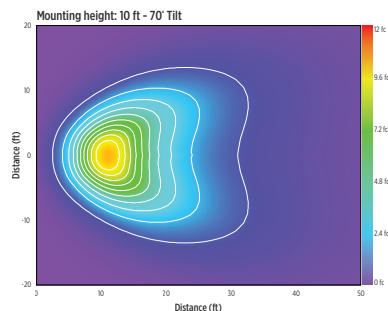
Generation

V3 Version 3

Special Projects: We may be able to accommodate your special projects, so please don't hesitate to ask about additional options. Minimum order quantities and/or extended lead times will apply. Contact your Phoenix representative with specific inquiries.

Isolux Charts

SLXP LED - Flood



SLXP LED - Spot

