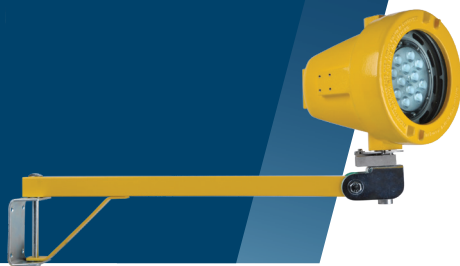


## Explosion-proof LED Task Light



Explosion-proof LED task light rated for hazardous and wet locations

Maximum versatility with spot and flood optic options

For use in chemical plants, drilling rigs, refineries and other hazardous locations

LED technology increases efficiency, eliminates maintenance and supports green initiatives

### Key Applications

Chemical plants  
Drilling rigs  
Refineries  
Food and beverage processing facilities  
Spirit distilleries  
Power plants  
Wastewater treatment plants

### Compliances

ETL/cETL Certified to:

- UL 1598 Ordinary Locations
- UL 1598A Marine Outside Type (Saltwater)
- UL 844 Hazardous Locations
  - Class I, Division 1 Groups C & D
  - Class I, Division 2 Groups A, B, C & D
  - Class II, Divisions 1 & 2 Groups F & G
  - Class III, Divisions 1 & 2
  - T4A (120°C) Temperature Rating

• CSA C22.2 No. 250.0

NEMA 4X

Buy American Act (BAA)

Build America Buy America Act (BABA)

### Specifications

Construction	Corrosion-resistant, copper-free cast aluminum shell and cover
Finish	Yellow thermoset powder coat
Hardware	Zinc plated
Lens	¾ inch thick tempered glass
Arm	26.00 inch swing arm made from 1.50 inch square steel tube Swings horizontally up to 180°
Joints	Threaded joints between shell and cover
Head	Head rotates up to 230° horizontally and up to 74° vertically
Light source	Up to 4600 lumens, 44W Various optics available CCT 5000K 50,000 hour rated life
Power source	120-277V, 50-60Hz Fully potted, replaceable driver Over-voltage, over-current and short-circuit protection
Power factor	> 0.9
Wiring	6 feet (1.8 m) of wire Wire entrance is factory sealed
Mounting	3x5 inch zinc plated steel bracket
Ambient operating temperature	-20°C to +40°C
Weight	Fixture: 22.0 lb (10.0 kg) Packaged: 23.0 lb (10.4 kg)
Warranty	3 years



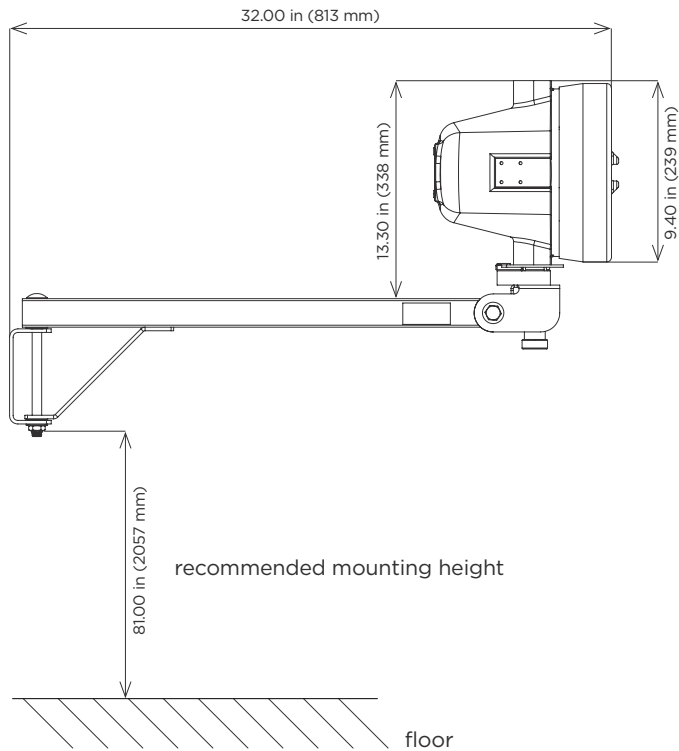
*This product complies with domestic preference requirements such as BABA. For additional information, visit [phoenixlighting.com](http://phoenixlighting.com) or consult your representative.*



*This product complies with domestic preference requirements such as BAA or TAA. For additional information, visit [phoenixlighting.com](http://phoenixlighting.com) or consult your representative.*

For IES files, see website or contact factory

## Dimensions



## Ordering Information

**Example:** DLXLED-FL-V3

Fixture	Optics	Generation
DLXLED	FL	V3
	SP	
	WS	
	VS	
	OV	

### Optics

FL 55° flood optic  
SP 25° spot optic  
WS 35° wide spot optic  
VS 15° very narrow optic  
OV 45° x 15° oval optic

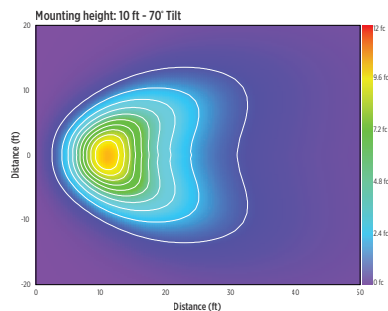
### Generation

V3 Version 3

**Special Projects:** We may be able to accommodate your special projects, so please don't hesitate to ask about additional options. Minimum order quantities and/or extended lead times will apply. Contact your Phoenix representative with specific inquiries.

## Isolux Charts

**DLX LED - Flood**



**DLX LED - Spot**

