



**PHOENIX**<sup>®</sup>  
DURABILITY X DESIGN™

## Conveyo™ (CVO)

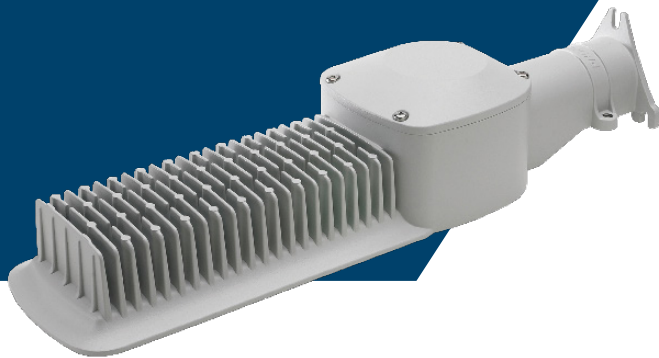
### LED Conveyor Belt Light

50W fixture delivers up to 6500 lumens

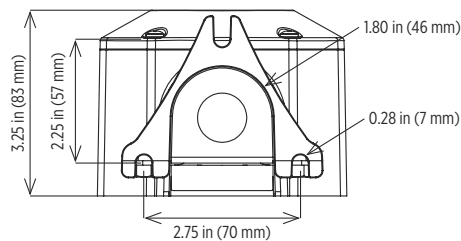
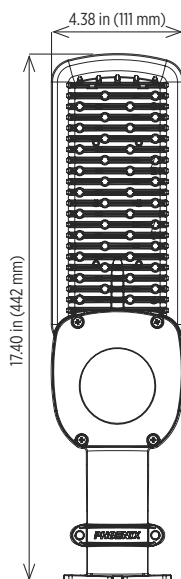
Economic yet durable design

Primary applications include conveyor belts, narrow pathways  
as well as general wall or pole mount lighting

LED technology increases efficiency, eliminates maintenance and supports green initiatives



### Dimensions



### Specifications

<b>Construction</b>	Marine grade, cast aluminum housing
<b>Finish</b>	Gray polyester powder coat
<b>Hardware</b>	Marine grade 316 stainless steel
<b>Lens</b>	UV- and impact-resistant PMMA Type II optic Full cutoff, zero uplight
<b>Light source</b>	Standard option up to 6500 lumens, CCT 5000K Warm white option up to 5800 lumens, CCT 3000K 50W 50,000 hour rated life
<b>Power source</b>	120-277V, 50-60Hz Fully potted Replaceable Overload, over-voltage, over-temperature and short-circuit protection
<b>Power factor</b>	>.9 at 120V
<b>Wiring</b>	Stranded wire leads Water-tight grommet - standard Water-tight cord grip (MAR) Water-tight conduit hub (HAZ)
<b>Ambient operating temperature</b>	-40°C to +50°C
<b>Mounting</b>	Wall or pole mount capable Accommodates NPS 1.25 inch (1.66 inch OD)/DN 32 mm (42 mm OD)
<b>Fixture weight</b>	4.0 lb (1.8 kg)
<b>Warranty</b>	3 year

Contact factory for IES files

### Compliances

UL/cUL Listed to:

- UL 1598 Suitable for Wet Locations
- UL 1598A Marine Outside Type (Saltwater)
- UL 844 Hazardous Location
  - Class I, Division 2 Groups A, B, C, D
  - Class II, Division 2 Groups F, G
  - Class III
- CSA C22.2 No. 250.0
- CSA C22.2 No. 137

CE

International Dark Sky Association approved (WW options)

IP63 rated (wall mount)

IP65 rated (pole mount)

NEMA 4X (MAR option only)

## Ordering Information

Example: CVO-48LED

Fixture	Wattage	Options
CVO	48LED	HAZ MAR <sup>2</sup> WW <sup>1</sup>

### Wattage

48LED 50W, up to 6500 lumens

### Options

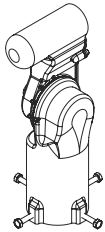
HAZ UL 844 listed  
MAR<sup>2</sup> UL 1598A Marine Outside Type (Saltwater) listed  
WW<sup>1</sup> Warm white LEDs, up to 5800 lumens

### Notes

- 1 International Dark Sky Association approved
- 2 NEMA 4X (MAR option only)

**Special Projects:** We may be able to accommodate your special projects, so please don't hesitate to ask about additional options. Minimum order quantities and/or extended lead times will apply. Contact your Phoenix representative with specific inquiries.

## Accessories (order separately)

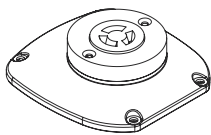


### Adjustable Tenon Mount Kit

CVO-TN-MNT-ADJ Adjustable in 5° increments  
Accommodates NPS 1.00 inch pipe (1.32 inch OD)/DN 25 mm (34 mm OD),  
NPS 1.25 inch pipe (1.66 inch OD)/DN 32 mm (42 mm OD),  
NPS 1.50 inch pipe (1.90 inch OD)/DN 40 mm (48 mm OD) and  
NPS 2.00 inch pipe (2.38 inch OD)/DN 50 mm (60 mm OD)

### Lens Kits

CVO-LNS-100 (100° lens kit)  
**Note:** Contact factory for additional optic options



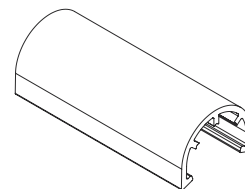
### Photocell Receptacle Kit

CVO-PCR  
**Note:** When installed, fixture will be IP63 rated;  
not suitable for use with HAZ or MAR options



### Safety Cable Kit

CVO-SFCB



### One Inch Adaptor Bracket

CVO-AB1



# Conveyo™ (CVO)

LED Conveyor Belt Light

**PHOENIX**<sup>®</sup>  
DURABILITY X DESIGN™

*Cover photo: Conveyo fixture illuminating conveyor belt at an asphalt plant.*

Product design and specifications are subject to change without notice. The most current version of this specification sheet can be found on our website: [www.phoenixlighting.com](http://www.phoenixlighting.com).



Phoenix Lighting 8711 West Port Avenue Milwaukee, WI 53224 USA  
Phone: +1 414.973.3300 Toll Free: 800.438.1214 Fax: +1 414.973.3210 [www.phoenixlighting.com](http://www.phoenixlighting.com)

**N5499970K**  
05.06.21