

Designed to replace linear fluorescent fixtures and mid-power floodlights

For use on heavy equipment, conveyors, machine houses and other demanding applications

Compact, low profile design with various output levels and mounting options

LED technology increases efficiency, eliminates maintenance and supports green initiatives

### Key Applications

Hazardous locations	Offshore wind turbine lighting
Electric rope shovels	Emergency lighting
Machine house lighting	Passageways
Electrical room lighting	Draglines
Engine room lighting	Cargo holds

### Compliances

ETL/cETL Certified to:

- UL 1598 Suitable for Wet Locations
- UL 1598A Marine Outside Type (Saltwater)
- UL 844 Hazardous Location
  - Class I, Division 2 Groups A, B, C, D
  - Class I, Zone 2 Group IIC
  - T3A - 180°C maximum surface temperature
- CSA C22.2 No. 250.0
- CSA C22.2 No. 137

CE

ABS

IP67 rated

LM79 and LM80 reports available

Buy American Act (BAA)

Build America Buy America Act (BABA)

### Specifications

<b>Construction</b>	Marine grade, extruded aluminum housing Marine grade, die cast aluminum end plates
<b>Finish</b>	Anodized finish on extruded parts Thermoset powder coat paint on die cast parts
<b>Hardware</b>	Marine grade (316) stainless steel



*This product complies with domestic preference requirements such as BABA. For additional information, visit [phoenixlighting.com](http://phoenixlighting.com) or consult your representative.*



*This product complies with domestic preference requirements such as BAA or TAA. For additional information, visit [phoenixlighting.com](http://phoenixlighting.com) or consult your representative.*

For IES files, see website or contact factory

### Specifications

<b>Lens</b>	Diffuse polycarbonate (DP) - standard
<b>Light source</b>	HDL1 - up to 3150 lumens, 28W HDL2 - up to 6300 lumens, 55W HDL3 - up to 9400 lumens, 84W CCT 5000K (standard), optional 4000K (40K) 50,000 hour rated life
<b>Power source</b>	120-277V, 50-60Hz (UNIV) 277-480V, 50-60Hz (277-480) 12-24V DC (DC) Fully potted, replaceable driver
<b>Power factor</b>	> 0.9 at 120V
<b>Surge protection</b>	20kV/kA
<b>Wiring</b>	Wire leads standard (connectors accept up to 12 AWG wire) ½ inch NPT outlets Threaded plug and two cord grips provided accept cord diameters 0.25-0.375 inch
<b>Through wiring</b>	Standard fixture is designed for continuous row mounting
<b>EMB</b>	Input power 120-277V, 50/60Hz 90 minute run time Approximately 1100 lumens 7 to 10 year battery life expectancy
<b>Ambient operating temperature</b>	-40°C to +50°C (non-EMB units) 0°C to +40°C (EMB units)
<b>Mounting</b>	Surface/ conduit mount (SM) - standard Adjustable mounting feet - standard Retrofit mounting brackets for Phoenix LFSB or RSL fixtures - sold separately Harp kit accessories - sold separately
<b>Weight</b>	HDL1 - 6.5 lb (3.0 kg) HDL2 - 11.0 lb (5.0 kg) HDL3 - 14.0 lb (6.4 kg)
<b>Warranty</b>	5 years

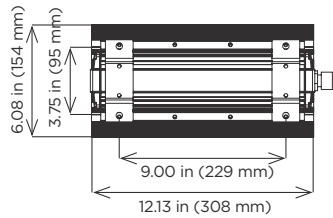
# HDL-LED Series

Heavy Duty Linear LED

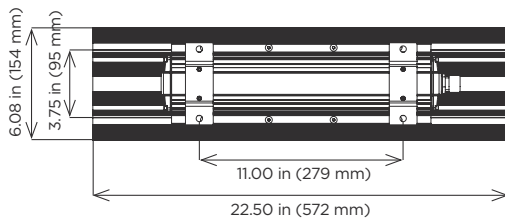
**PHOENIX**<sup>®</sup>  
DURABILITY X DESIGN™

## Dimensions

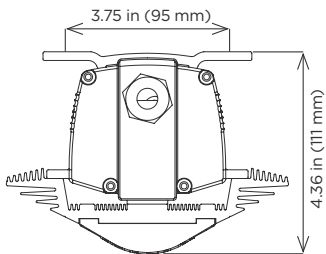
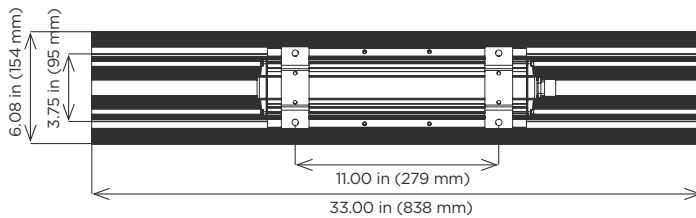
### HDL1



### HDL2



### HDL3



*HDL2s in an electrical control room*

## Ordering Information

**Example:** HDL-2-UNIV-DP-SM-V2

Fixture	Circuit Boards	Voltage	Lens	Mounting	Option	Generation
HDL	1 <sup>3</sup>	UNIV	DP	SM	EMB <sup>1</sup>	V2 <sup>2</sup>
	2	277-480 <sup>3</sup>			40K <sup>6</sup>	
	3	DC <sup>4,5</sup>				

### Circuit Boards

		Voltage	Lens
1 <sup>3</sup>	One circuit board (3150 lumens)	UNIV 120-277V, 50-60Hz	DP Diffuse polycarbonate
2	Two circuit boards (6300 lumens)	277-480 <sup>3</sup> 277-480V, 50-60Hz	
3	Three circuit boards (9400 lumens)	DC <sup>4,5</sup> 12-24V DC	

### Mounting

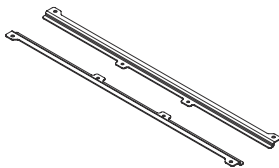
Mounting	Option	Generation
SM Surface/conduit mount	EMB <sup>1</sup> Emergency battery backup (90 minutes) 40K <sup>6</sup> 4000K LEDs	V2 <sup>2</sup> Version 2

### Notes

- 1 Certified to UL844 C1D2.
- 2 V2 standard on HDL-2. Not available on HDL-1 or HDL-3.
- 3 277-480V option not available on HDL-1. 277-480V models are only certified to UL1598/UL1598A.
- 4 Low voltage DC models do not have any certifications.
- 5 Only available on HDL-1.
- 6 Standard CCT is 5000K (leave blank).

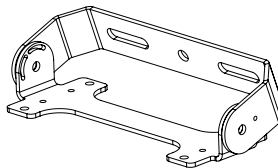
**Special Projects:** We may be able to accommodate your special projects, so please don't hesitate to ask about additional options. Minimum order quantities and/or extended lead times will apply. Contact your Phoenix representative with specific inquiries.

## Accessories (order separately)



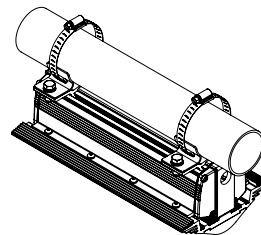
### HDL Retrofit Bracket for LFSB/RSL fixtures

RFBKTHDL1-RSL  
RFBKTHDL1-LFSB2 (LFSB 2 foot)  
RFBKTHDL2/3-RSL  
RFBKTHDL2/3-LFSB4 (LFSB 4 foot)



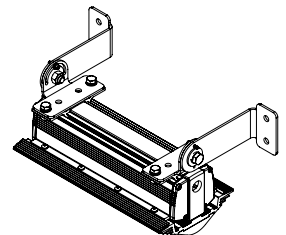
### Harp Kits

KIT-HARP-HDL1 (HDL1)  
KIT-HARP-HDL2/3 (HDL2 and HDL3)



### Pipe Mount Kit

PMK-HDL



### Wall Mount Kit

WMK-HDL

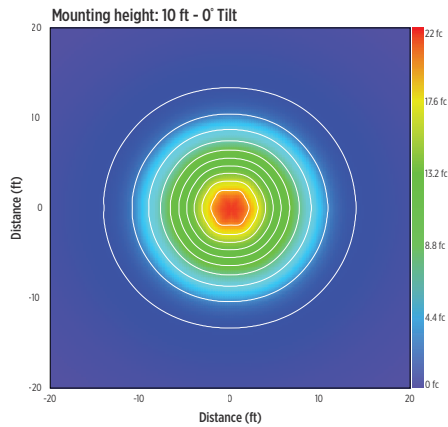
# HDL-LED Series

Heavy Duty Linear LED

**PHOENIX**<sup>®</sup>  
DURABILITY X DESIGN™

## Isolux Charts

### HDL2 UNIV-DP-SM (standard)



Product design and specifications are subject to change without notice. The most current version of this specification sheet can be found at [www.phoenixlighting.com](http://www.phoenixlighting.com).