

PHOENIX[®]
DURABILITY X DESIGN[™]



DURABLE LIGHTING
MADE FOR MINING[™]

Every day, with every light, and for every project ...

... we are committed to durability. As we design, engineer and manufacture our products for the mining industry, we are constantly thinking about operators and what they need to do their jobs safely and effectively.



Every night, at mines around the world,

operators depend on Phoenix lights. From the first light we built in 1943 to the LED fixture that was installed last week, our product line has been a sequence of innovations inspired by mine operators worldwide and their evolving needs.

With unrivaled industry expertise and the highest level of technology available, Phoenix light fixtures bring a new level of safety and efficiency to your operations.



Phoenix Lighting
BY THE NUMBERS

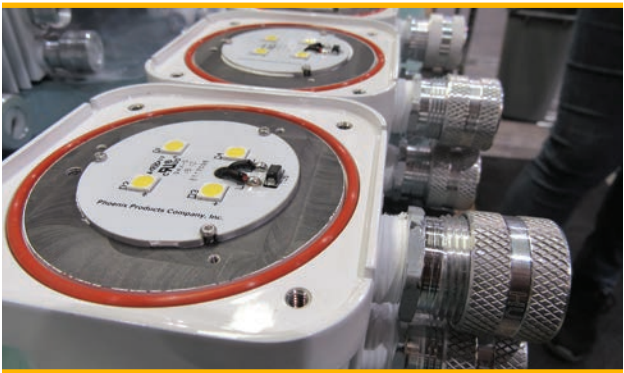
Just a few of the reasons
you can count on Phoenix.

6	continents with Phoenix lighting
78	years manufacturing lights
129	years in business
3,000+	mine sites globally
>500,000	LED fixtures

Our fixtures have been
tested and proven ...

... in the most extreme conditions for over 78 years. We use measures like potted drivers, high quality finishes and marine grade components to ensure our fixtures thrive in the mining environment and last longer than any other option.

We test our fixtures by exposing them to the most extreme scenarios they are designed for – shock, vibration, moisture, hazardous conditions ... Phoenix sends every fixture out the door with the confidence that it will stand up to the rigors of the mining environment.



Dragline

Phoenix has retrofitted more draglines to LED globally than any other lighting company. Why are operators choosing Phoenix? They need the highest level of durability along with uniform, consistent light under the boom. When these two factors are optimized, so is productivity and safety.



ModCom® 3 Lo

Shovel On machine house pg. 6



ModCom® 3 Max

Dragline Outside machine house, on mast, on boom pg. 6



ModCom® 3 Hi

Dragline Inside and outside machine house, on boom
Shovel On A-frame pg. 6



HDL-LED Series

Dragline Inside machine house
Shovel Inside and under machine house pg. 9



Electric Rope Shovel

Phoenix has been working with operators and OEMs to deliver quality illumination to shovels since the 1940s. Enabling the operator to effectively read the grade while maintaining the highest level of safety has always been a joint goal of Phoenix and its customers.



Wayfinder™ 2

Dragline Inside tub
Shovel Above doors pg. 10



Cube-Light Wall Mount

Dragline Inside tub
Shovel Above doors pg. 10



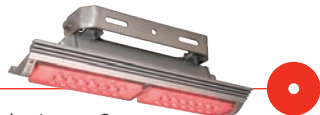
SturdiLED®

Shovel Under machine house pg. 10



Danger Light™

Shovel Perimeter (back and sides) pg. 9



Dozer & DC Blasthole Drill

Extreme shock, vibration and g-force often cause premature failure of lights, leading to lost productivity. Phoenix lights are designed to endure these conditions so operators can get their jobs done at any hour.



Sturdilite® Master Series

Dozer Above blade and tracks, operator's cab

Drill Above and below deck, operator's cab *pg. 9*



Sturdilite® Move Series

Dozer Above blade and tracks, operator's cab

Drill Above and below deck, operator's cab *pg. 9*



Haul Truck & Hydraulic Excavator

The punishing work of a hydraulic excavator and haul truck need lighting that can take a hit. With consistent light and exacting standards of durability, operators are choosing Phoenix for their mobile equipment to keep productivity and safety high and maintenance at a minimum.



Sturdilite® Master Series

Haul Truck Driving, side and back lights

Excavator Dig lights and perimeter lights *pg. 9*



Sturdilite® Move Series

Haul Truck Driving, side and back lights

Excavator Dig lights and perimeter lights *pg. 9*



Flood Lighting



ModCom® 3 Series Heavy Duty LED Floodlight

Patents pending

- the third generation of durable, compact, surface-mounted fixtures specifically designed for large AC mining equipment and hazardous locations
- optional lighting controls that enable color tuning, power monitoring and preventative maintenance notifications
- custom designed optics, including new, no-glare perimeter optic, maximize fixture performance and increase equipment efficiency
- optional Amber CCT models improve visibility in high fog and dirt conditions



Wattage up to 121W, 231W or 438W
Lumens up to 15,000, 30,000, or 52,500
Warranty 5 years



DC Work Lights



Sturdilite® Master Series Low-voltage LED Floodlight

US Design Patent No. D993,511

- durable, compact design ideal for use on demanding mobile equipment
- customized optics minimize glare and provide precise optical control
- High model available with linear optics and red LEDs to indicate unsafe zones (Alert)



Wattage up to 24W, 48W or 82W
Lumens up to 2500, 5000 or 7600
Warranty 3 years



Sturdilite® Move Series Low-voltage LED Floodlight

- durable, economic line of DC-voltage LED work lights
- ideal for mobile mining equipment such as haul trucks, excavators, bulldozers and wheel loaders
- easy installation and fits easily into factory-installed positions



Wattage 19W, 40W or 64W
Lumens up to 2000, 5000 or 7000
Warranty 1 year



Large Area Lighting



Highland® Series High Mast & Area LED Floodlight

- ideal for stockyards, haul roads and pit lighting
- can be paired with Synapse® lighting controls system
- designed to meet U.S. and Canadian requirements



Wattage up to 265W or 530W (pictured)
Lumens up to 40,000 or 80,000
Warranty 5 years



CLIR™ Series High Performance LED Large Area Floodlight

- ideal for stockyards, haul roads and pit lighting
- exceptional output for effective long-distance lighting
- unmatched efficiency with maximum glare control



Wattage 630W
Lumens 85,000
Warranty 5 years



Meridian Series High Mast & Area LED Floodlight

- ideal for stockyards, haul roads and pit lighting
- can be paired with Synapse® lighting controls system
- certified for markets outside of North America



Wattage up to 265W or 530W (pictured)
Lumens up to 40,000 or 80,000
Warranty 5 years



Soar™ Series High Mast & Large Area LED

- ideal for stockyards, haul roads and pit lighting
- can be paired with Synapse® lighting controls system
- delivers powerful, high output illumination



Wattage 960W
Lumens up to 130,000
Warranty 5 years



Wayfinder™ 2 LED Accessway Light

Patent Pending

- projects up to 1300 lumens to walkways, stairways and other small areas
- integrated emergency battery backup (EMB) option keeps the fixture illuminated for 6-hour or 2-hour durations during power interruptions
- optional motion sensor for additional energy savings



Wattage 3.2W - 11W (field adjustable output)
Lumens up to 1300
Warranty 5 years



SturdiLED® Super-rough Service LED Floodlight

US Design Patent No. D708,776

- potted driver, conformal coated circuit board and rugged shock mount base provides maximum vibration resistance
- replaces up to 150W HID or 500W quartz halogen



Wattage 37W
Lumens 2900
Warranty 5 years



Cube-Light Compact LED Area Light

Australian Design No. 359170; US Patent No. D762,321 S

- simple, yet durable 13W LED area light
- compact design makes it ideal for use along accessways and stairways and in small spaces
- wall mount version available as a complete fixture or retrofit kit, an ideal replacement for jelly jar fixtures



Wattage 13W
Lumens up to 1000
Warranty 3 years



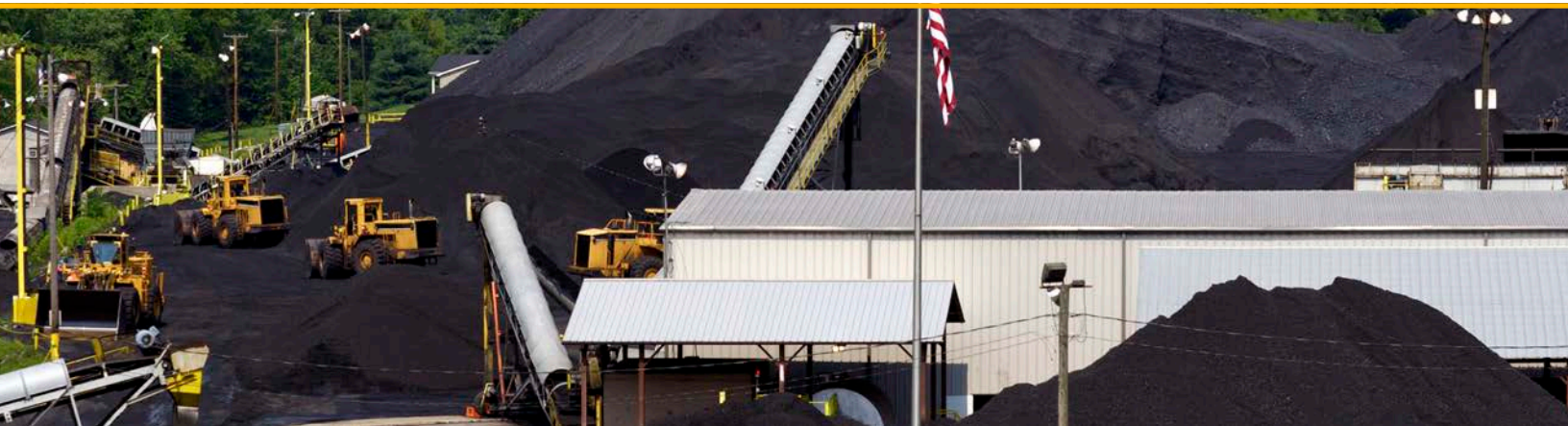
Sturdilite® Grind 18W LED Floodlight

US Design Patent No. D957,023

- compact, yet durable design
- energy efficient and replaces up to 250W quartz halogen fixtures
- magnetic base accessory makes fixture ideal for maintenance or task lighting



Wattage 18W
Lumens up to 2500
Warranty 5 years



Linear & Area Lighting



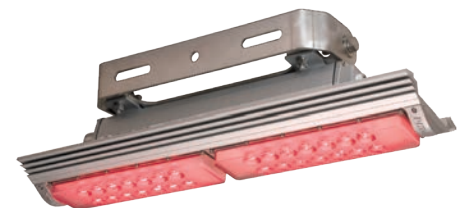
HDL-LED Series Heavy Duty LED

US Design Patent No. D720,875

- designed to replace linear fluorescent fixtures and up to 400W HID floodlights
- marine grade construction, potted driver and emergency battery backup (EMB) option
- ideal for applications that require hazardous ratings



Wattage 28W, 55W (pictured) or 83W
Lumens 2850, 5700 or 8550
Warranty 5 years



Danger Light™ Heavy Duty LED

- designed to illuminate the area surrounding large mobile equipment to visually indicate dangerous zones (red) or safe zones (green)
- compact design with an adjustable mounting harp



Wattage 42W
Lumens up to 3800
Warranty 5 years



CVO Series LED Conveyor Belt Light

- ideal for use on conveyor belts, narrow pathways as well as general wall or pole mount lighting
- hazardous and marine rated options available
- amber and warm white options available



Wattage 50W
Lumens up to 6500
Warranty 3 years



Ascend LHB Series Linear LED High Bay

- ideal for warehouses, maintenance bays, processing facilities, and wide temperature ranges, including applications up to 55°C
- three models available are wattage and color temperature selectable
- optional emergency battery backup and occupancy sensor



Wattage 80/125/180W, 200/240/290W or 325/385/450W
Lumens 24,000, 42,000 (pictured) or 65,000
Warranty 5 years



Additional Hazardous Rated Mining Lighting

Conquer™ Series Floodlight
Mid-watt Hazardous Rated LED Flood



Wattage 60W
Lumens 6000
Warranty 5 years (-40°C to +64°C ambient temperature)

Conquer™ Series Linear
Mid-watt Hazardous Rated
Linear LED



Wattage 60W (pictured) or 80W
Lumens 6600 or 9400
Warranty 5 years (-40°C to +64°C ambient temperature)

LFXB LED Series
Explosion-proof LED



Wattage 40W (pictured) or 80W
Lumens up to 4200 or 8400
Warranty 3 years

Defend Flood™ Series
Explosion-proof LED Floodlight



Wattage 100W or 165W
Lumens 14,000 or 23,500
Warranty 5 years

Metallic LED VP Series
Vaporproof Fixture



Wattage 17W
Lumens 1336
Warranty 5 years

SLX LED/SLXP LED/
DLX LED *docklite*®
Explosion-proof LED Floodlights



Wattage 39W
Lumens 2540
Warranty 3-5 years

Command Flood® Series
Marine Grade Floodlight



Wattage 120W (pictured), 240W or 360W
Lumens up to 15,300, 32,000 or 48,000
Warranty 5 years

ReadiLED™ Series
LED Snaplight® and Retrofit Kit



Wattage 19W (pictured) or 38W
Lumens 2700 or 5400
Warranty 3 years

LEDBM
LED Berth & Mirror Light



Wattage 14W
Lumens up to 520
Warranty 3 years

Additional Mining Lighting

DLA 2 *docklite*®
9W Modular LED Loading Dock
Light Head



US Design Patent No. D957,023



Wattage 9W
Lumens 1100
Warranty 5 years

FlexPro *docklite*®
Flexible Arm LED Dock Light



Wattage 10W
Lumens up to 1100
Warranty 3 years





PHOENIX[®]
DURABILITY X DESIGN[™]

Phoenix Lighting 8711 West Port Avenue Milwaukee, WI 53224 USA
Phone: +1 414.973.3300 Email: mining@phoenixlighting.com www.phoenixlighting.com/mining