

# PHOENIX<sup>®</sup>

DURABILITY *X* DESIGN<sup>™</sup>



DURABLE LIGHTING  
**MADE FOR MINING<sup>™</sup>**



## Every day, with every light, and for every project ...

... we are committed to durability. As we design, engineer and manufacture our products for the mining industry, we are constantly thinking about operators and what they need to do their jobs safely and effectively.



## Every night, at mines around the world,

operators depend on Phoenix lights. From the first light we built in 1943 to the LED fixture that was installed last week, our product line has been a sequence of innovations inspired by mine operators worldwide and their evolving needs.

With unrivaled industry expertise and the highest level of technology available, Phoenix light fixtures bring a new level of safety and efficiency to your operations.



## Phoenix Lighting BY THE NUMBERS

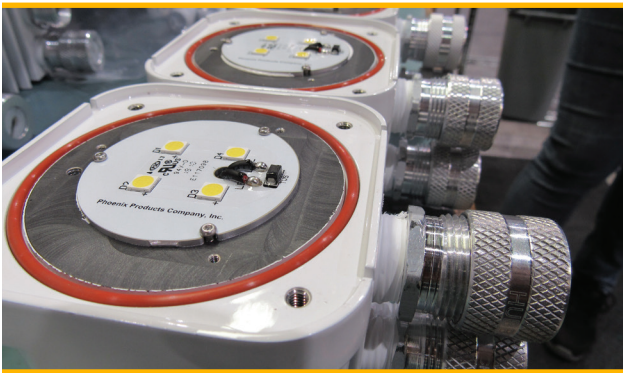
Just a few of the reasons  
you can count on Phoenix.

6	continents with Phoenix lighting
78	years manufacturing lights
129	years in business
3,000+	mine sites globally
>500,000	LED fixtures

## Our fixtures have been tested and proven ...

... in the most extreme conditions for over 78 years. We use measures like potted drivers, high quality finishes and marine grade components to ensure our fixtures thrive in the mining environment and last longer than any other option.

We test our fixtures by exposing them to the most extreme scenarios they are designed for – shock, vibration, moisture, hazardous conditions ... Phoenix sends every fixture out the door with the confidence that it will stand up to the rigors of the mining environment.





# Dragline

Phoenix has retrofitted more draglines to LED globally than any other lighting company. Why are operators choosing Phoenix? They need the highest level of durability along with uniform, consistent light under the boom. When these two factors are optimized, so is productivity and safety.



### ModCom® 3 Lo

Shovel On machine house pg. 6



### ModCom® 3 Max

Dragline Outside machine house, on mast, on boom pg. 6



### ModCom® 3 Hi

Dragline Inside and outside machine house, on boom  
Shovel On A-frame pg. 6



### HDL-LED Series

Dragline Inside machine house  
Shovel Inside and under machine house pg. 9



# Electric Rope Shovel

Phoenix has been working with operators and OEMs to deliver quality illumination to shovels since the 1940s. Enabling the operator to effectively read the grade while maintaining the highest level of safety has always been a joint goal of Phoenix and its customers.



### Wayfinder™

Dragline Inside tub  
Shovel Above doors pg. 10



### Cube-Light Wall Mount

Dragline Inside tub  
Shovel Above doors pg. 10



### SturdiLED®

Shovel Under machine house pg. 10



### Danger Light™

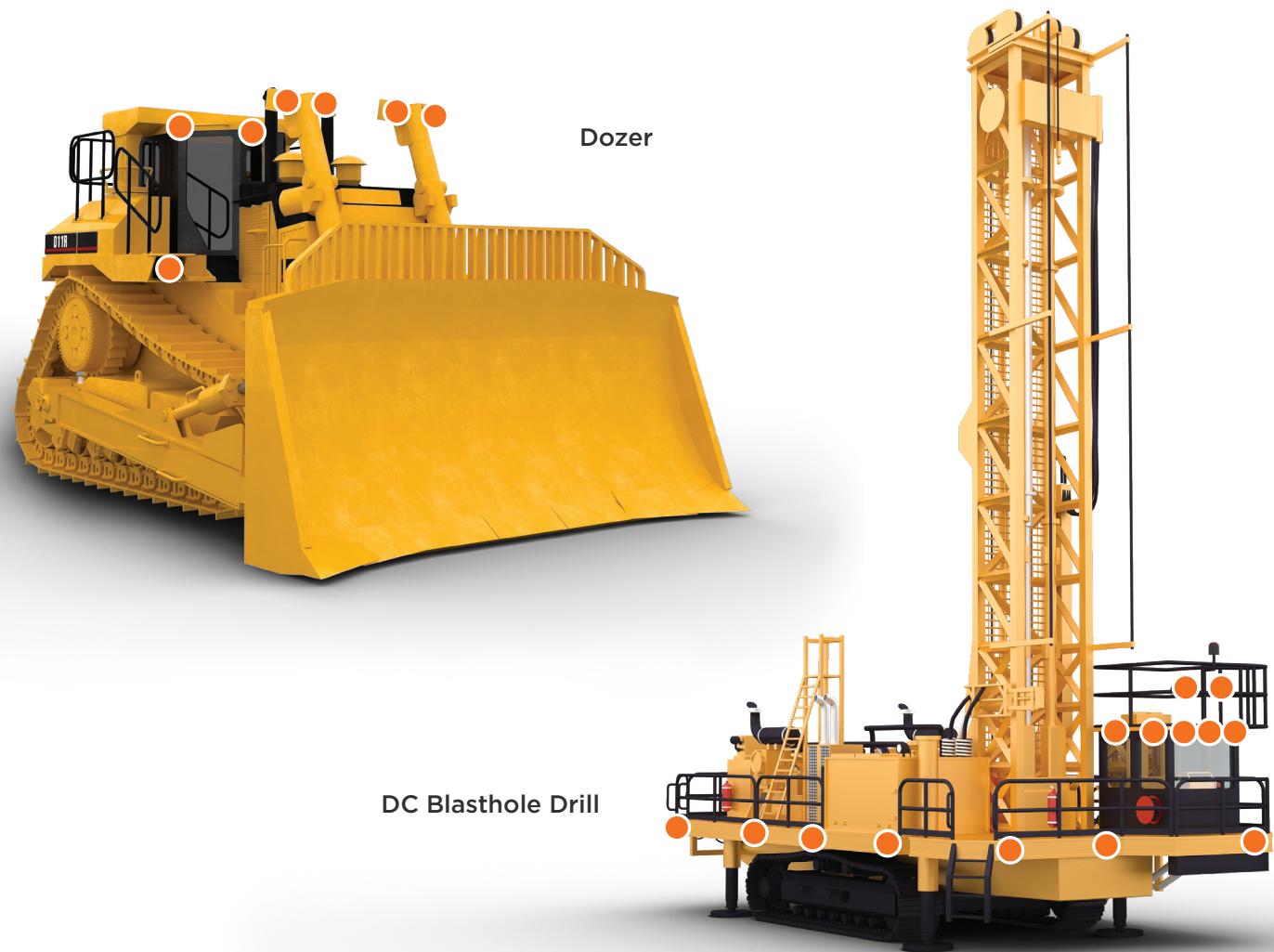
Shovel Perimeter (back and sides) pg. 9





# Dozer & DC Blasthole Drill

Extreme shock, vibration and g-force often cause premature failure of lights, leading to lost productivity. Phoenix lights are designed to endure these conditions so operators can get their jobs done at any hour.



## Sturdilite® Master Series

**Dozer** Above blade and tracks, operator's cab

**Drill** Above and below deck, operator's cab *pg. 9*



## Sturdilite® Move Series

**Dozer** Above blade and tracks, operator's cab

**Drill** Above and below deck, operator's cab *pg. 9*



# Haul Truck & Hydraulic Excavator

The punishing work of a hydraulic excavator and haul truck need lighting that can take a hit. With consistent light and exacting standards of durability, operators are choosing Phoenix for their mobile equipment to keep productivity and safety high and maintenance at a minimum.



## Sturdilite® Master Series

**Haul Truck** Driving, side and back lights

**Excavator** Dig lights and perimeter lights *pg. 9*



## Sturdilite® Move Series

**Haul Truck** Driving, side and back lights

**Excavator** Dig lights and perimeter lights *pg. 9*





# Flood Lighting



## ModCom® 3 Series Heavy Duty LED Floodlight

Patents pending

- the third generation of durable, compact, surface-mounted fixtures specifically designed for large AC mining equipment and hazardous locations
- optional lighting controls that enable color tuning, power monitoring and preventative maintenance notifications
- custom designed optics, including new, no-glare perimeter optic, maximize fixture performance and increase equipment efficiency
- optional Amber CCT models improve visibility in high fog and dirt conditions



**Wattage** up to 121W, 231W or 438W  
**Lumens** up to 15,000, 30,000, or 52,500  
**Warranty** 5 years



# DC Work Lights



## Sturdilite® Master Series Low-voltage LED Floodlight

- durable, premium line of LED fixtures
- lightweight, compact design ideal for use on the most demanding mobile equipment
- customized optics minimize glare and provide precise optical control



**Wattage** up to 24W, 48W or 82W  
**Lumens** up to 2500, 5000 or 7600  
**Warranty** 3 years



## Sturdilite® Move Series Low-voltage LED Floodlight

- durable, economic line of DC-voltage LED work lights
- ideal for mobile mining equipment such as haul trucks, excavators, bulldozers and wheel loaders
- easy installation and fits easily into factory-installed positions



**Wattage** 19W, 40W or 64W  
**Lumens** up to 2000, 5000 or 7000  
**Warranty** 1 year





# Large Area Lighting



## Highland® Series High Mast & Area LED Floodlight

- ideal for stockyards, haul roads and pit lighting
- can be paired with Phoenix LIT System™ for advanced lighting controls
- designed to meet U.S. and Canadian requirements



**Wattage** up to 265W or 530W (pictured)  
**Lumens** up to 40,000 or 80,000  
**Warranty** 5 years



## CLIR™ Series High Performance LED Large Area Floodlight

- ideal for stockyards, haul roads and pit lighting
- exceptional output for effective long-distance lighting
- unmatched efficiency with maximum glare control



**Wattage** 630W  
**Lumens** 85,000  
**Warranty** 5 years



## Meridian Series High Mast & Area LED Floodlight

- ideal for stockyards, haul roads and pit lighting
- can be paired with Phoenix LIT System™ for advanced lighting controls
- certified for markets outside of North America



**Wattage** up to 265W or 530W (pictured)  
**Lumens** up to 40,000 or 80,000  
**Warranty** 5 years



## Soar™ Series High Mast & Large Area LED

- ideal for stockyards, haul roads and pit lighting
- can be paired with Phoenix LIT System™ for advanced lighting controls
- delivers powerful, high output illumination



**Wattage** 960W  
**Lumens** up to 130,000  
**Warranty** 5 years



## Wayfinder™ LED Accessway Light

**Patent Pending**

- projects up to 1200 lumens to walkways, stairways and other small areas
- integrated emergency battery backup (EMB) option keeps the fixture illuminated for up to 120 minutes during power interruptions



**Wattage** 2.25W - 9W (field adjustable output)  
**Lumens** up to 1200  
**Warranty** 5 years



## SturdiLED® Super-rough Service LED Floodlight

**US Design Patent No. D708,776**

- potted driver, conformal coated circuit board and rugged shock mount base provides maximum vibration resistance
- replaces up to 150W HID or 500W quartz halogen



**Wattage** 37W  
**Lumens** 2900  
**Warranty** 5 years



## Cube-Light Compact LED Area Light

**Australian Design No. 359170;  
US Patent No. D762,321 S**

- simple, yet durable 13W LED area light
- compact design makes it ideal for use along accessways and stairways and in small spaces
- wall mount version available as a complete fixture or retrofit kit, an ideal replacement for jelly jar fixtures



**Wattage** 13W  
**Lumens** up to 1000  
**Warranty** 3 years



## Sturdilite® Grind 18W LED Floodlight

**US Design Patent No. D957,023**

- compact, yet durable design
- energy efficient and replaces up to 250W quartz halogen fixtures
- magnetic base accessory makes fixture ideal for maintenance or task lighting



**Wattage** 18W  
**Lumens** up to 2500  
**Warranty** 5 years





# Linear & Area Lighting



## HDL-LED Series Heavy Duty LED

US Design Patent No. D720,875

- designed to replace linear fluorescent fixtures and up to 400W HID floodlights
- marine grade construction, potted driver and emergency battery backup (EMB) option
- ideal for applications that require hazardous ratings



**Wattage** 28W, 55W (pictured) or 83W  
**Lumens** 2850, 5700 or 8550  
**Warranty** 5 years

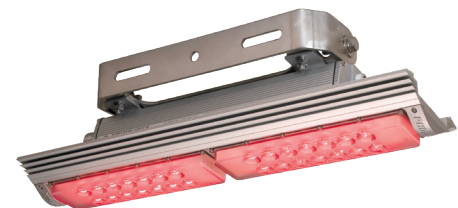


## CVO Series LED Conveyor Belt Light

- ideal for use on conveyor belts, narrow pathways as well as general wall or pole mount lighting
- hazardous and marine rated options available
- amber and warm white options available



**Wattage** 50W  
**Lumens** up to 6500  
**Warranty** 3 years



## Danger Light™ Heavy Duty LED

- designed to illuminate the area surrounding large mobile equipment to visually indicate dangerous zones (red) or safe zones (green)
- compact design with an adjustable mounting harp



**Wattage** 42W  
**Lumens** up to 3800  
**Warranty** 5 years



## LEDLT LED Tube Light

- instant-on, surface-mounted fixture designed to replace up to a 2 foot, 2 lamp 17W linear fluorescent
- impact-resistant and lightweight fixture available in AC and DC
- ideal for task lighting and illuminating compact spaces



**Wattage** 10W  
**Lumens** 1250  
**Warranty** 5 years





Additional Hazardous Rated Mining Lighting

Conquer™ Series Floodlight  
Mid-watt Hazardous Rated LED Flood



**Wattage** 60W  
**Lumens** 6000  
**Warranty** 5 years (-40°C to +64°C ambient temperature)

Conquer™ Series Linear  
Mid-watt Hazardous Rated  
Linear LED



**Wattage** 60W (pictured) or 80W  
**Lumens** 6600 or 9400  
**Warranty** 5 years (-40°C to +64°C ambient temperature)

LFXB LED Series  
Explosion-proof LED



**Wattage** 40W (pictured) or 80W  
**Lumens** up to 4200 or 8400  
**Warranty** 3 years

Defend Flood™ Series  
Explosion-proof LED Floodlight



**Wattage** 100W or 165W  
**Lumens** 14,000 or 23,500  
**Warranty** 5 years

Metallic LED VP Series  
Vaporproof Fixture



**Wattage** 17W  
**Lumens** 1336  
**Warranty** 5 years

SLX LED/SLXP LED/  
DLX LED *docklite*®  
Explosion-proof LED Floodlights



**Wattage** 39W  
**Lumens** 2540  
**Warranty** 3-5 years

Command Flood® Series  
Marine Grade Floodlight



**Wattage** 120W (pictured), 240W or 360W  
**Lumens** up to 15,300, 32,000 or 48,000  
**Warranty** 5 years

ReadiLED™ Series  
LED Snaplight® and Retrofit Kit



**Wattage** 19W (pictured) or 38W  
**Lumens** 1975 or 3617  
**Warranty** 3 years

LEDBM  
LED Berth & Mirror Light



**Wattage** 14W  
**Lumens** up to 520  
**Warranty** 3 years

Additional Mining Lighting

DLA 2 *docklite*®  
9W Modular LED Loading Dock  
Light Head



US Design Patent No. D957,023



**Wattage** 9W  
**Lumens** 1100  
**Warranty** 5 years

FlexPro *docklite*®  
Flexible Arm LED Dock Light



**Wattage** 10W  
**Lumens** up to 1100  
**Warranty** 3 years







**PHOENIX<sup>®</sup>**  
**DURABILITY X DESIGN<sup>™</sup>**

Phoenix Lighting 8711 West Port Avenue Milwaukee, WI 53224 USA  
Phone: +1 414.973.3300 Email: [mining@phoenixlighting.com](mailto:mining@phoenixlighting.com) [www.phoenixlighting.com/mining](http://www.phoenixlighting.com/mining)