



PHOENIX[®]
DURABILITY X DESIGN[™]

DURABLE LIGHTING
MADE FOR MINING[™]

Every day, with every light, and for every project ...

... we are committed to durability. As we design, engineer and manufacture our products for the mining industry, we are constantly thinking about operators and what they need to do their jobs safely and effectively.



Every night, at mines around the world,

operators depend on Phoenix lights. From the first light we built in 1943 to the LED fixture that was installed last week, our product line has been a sequence of innovations inspired by mine operators worldwide and their evolving needs.

With unrivaled industry expertise and the highest level of technology available, Phoenix light fixtures bring a new level of safety and efficiency to your operations.



Phoenix Lighting
BY THE NUMBERS

Just a few of the reasons you can count on Phoenix.

6	continents with Phoenix lighting
77	years manufacturing lights
128	years in business
3,000+	mine sites globally
400,000	LED fixtures

Our fixtures have been tested and proven ...

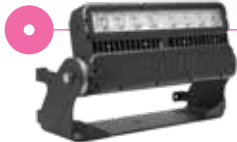
... in the most extreme conditions for over 77 years. We use measures like potted drivers, high quality finishes and marine grade components to ensure our fixtures thrive in the mining environment and last longer than any other option.

We test our fixtures by exposing them to the most extreme scenarios they are designed for – shock, vibration, moisture, hazardous conditions ... Phoenix sends every fixture out the door with the confidence that it will stand up to the rigors of the mining environment.



Dragline

Phoenix has retrofitted more draglines to LED globally than any other lighting company. Why are operators choosing Phoenix? They need the highest level of durability along with uniform, consistent light under the boom. When these two factors are optimized, so is productivity and safety.



ModCom® 2 Lo

Shovel: On machine house
pg. 6



ModCom® 2 Max

Dragline: Outside machine house, on mast,
on boom
pg. 6



ModCom® 2 Hi

Dragline: Inside and outside machine house,
on boom
Shovel: On A-frame
pg. 6



HDL-LED Series

Dragline: Inside machine house
Shovel: Inside and under machine house
pg. 9

Electric Rope Shovel

Phoenix has been working with operators and OEMs to deliver quality illumination to shovels since the 1940s. Enabling the operator to effectively read the grade while maintaining the highest level of safety has always been a joint goal of Phoenix and its customers.



Wayfinder™

Dragline: Inside tub
Shovel: Above doors
pg. 10



Cube-Light Wall Mount

Dragline: Inside tub
Shovel: Above doors
pg. 10



SturdiLED®

Shovel: Under machine house
pg. 10

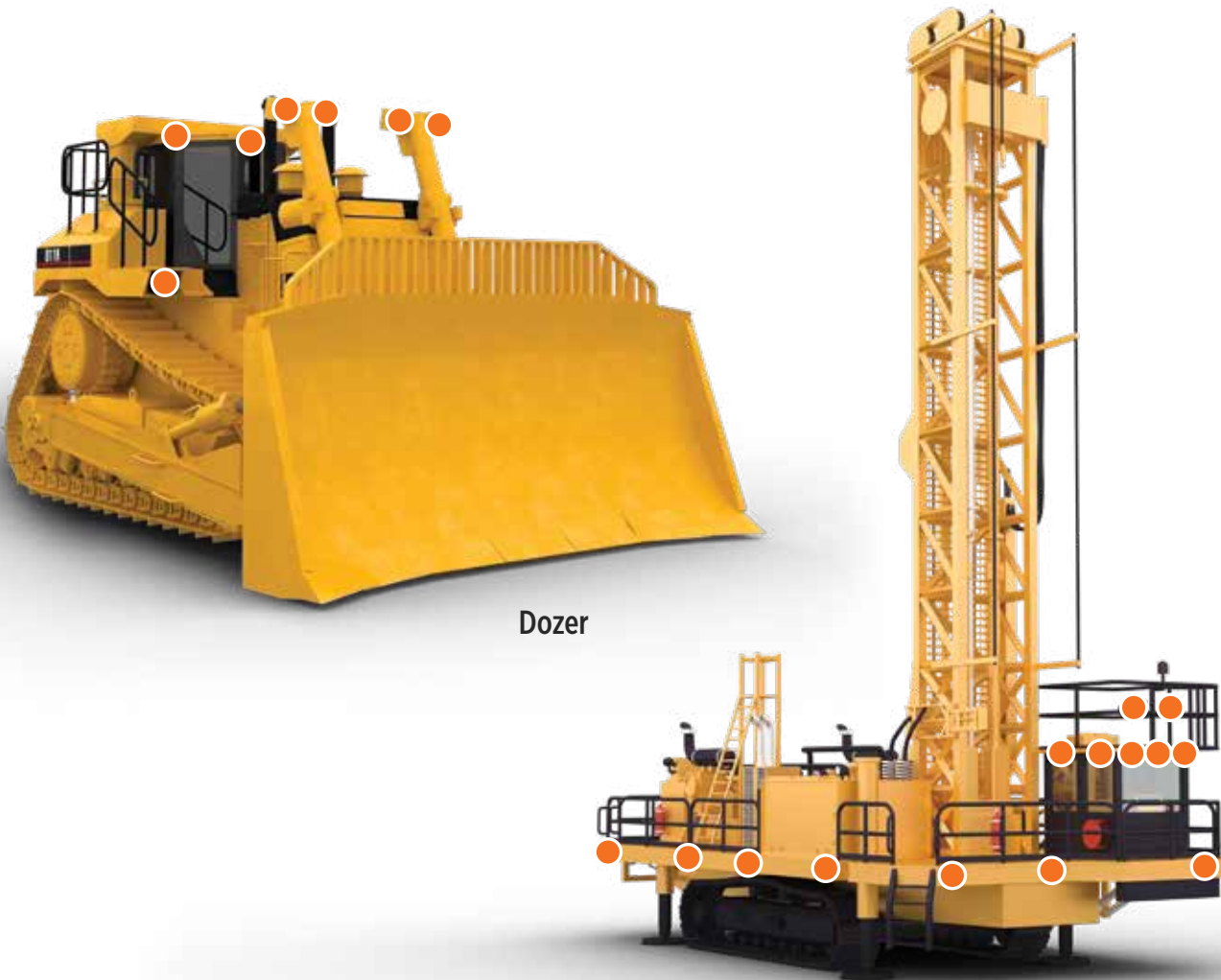


Danger Light™

Shovel: Perimeter (back and sides)
pg. 9

Dozer & DC Blasthole Drill

Extreme shock, vibration and g-force often cause premature failure of lights, leading to lost productivity. Phoenix lights are designed to endure these conditions so operators can get their jobs done at any hour.



Dozer

DC Blasthole Drill



Sturdilite® E-DC Series

Dozer: Above blade and tracks, operator's cab
Drill: Above and below deck, operator's cab
pg. 7



Sturdilite® Master Series

Dozer: Above blade and tracks, operator's cab
Drill: Above and below deck, operator's cab
pg. 7

Haul Truck & Hydraulic Excavator

The punishing work of a hydraulic excavator and haul truck need lighting that can take a hit. With consistent light and exacting standards of durability, operators are choosing Phoenix for their mobile equipment to keep productivity and safety high and maintenance at a minimum.



Haul Truck

Hydraulic Excavator



Sturdilite® E-DC Series

Haul Truck: Driving, side and back lights
Excavator: Dig lights and perimeter lights
pg. 7



Sturdilite® Master Series

Haul Truck: Driving, side and back lights
Excavator: Dig lights and perimeter lights
pg. 7

Flood Lighting



ModCom® 2 Series

Hazardous Rated LED Floodlight

US Design Patent No. US D805,241 S

- durable, compact, surface-mounted fixture designed for hazardous locations
- available in AC and DC
- amber option available



Wattage 145W, 290W (pictured) or 435W
Lumens up to 14,000, 28,000 or 42,000
Warranty 5 years



Highland® Series

High Mast & Area LED Floodlight

- ideal for stockyards, haul roads and pit lighting
- can be paired with Phoenix LIT System™ for advanced lighting controls
- designed to meet U.S. and Canadian requirements



Wattage up to 265W or 530W (pictured)
Lumens up to 40,000 or 80,000
Warranty 5 years



Meridian Series

High Mast & Area LED Floodlight

- ideal for stockyards, haul roads and pit lighting
- can be paired with Phoenix LIT System™ for advanced lighting controls
- certified for markets outside of North America



Wattage up to 265W or 530W (pictured)
Lumens up to 40,000 or 80,000
Warranty 5 years

Flood Lighting



Sturdilite® E-DC Series

Low-voltage LED Floodlight

- durable, economic LED option for DC applications
- ideal for mobile equipment such as haul trucks, excavators, bulldozers and wheel loaders
- easy installation and fit easily into factory-installed positions



Wattage 15W, 24W, 56W or 90W
Lumens up to 880, 1800, 4500 or 7100
Warranty 1 year



Sturdilite® Master Series

Low-voltage LED Floodlight

- durable, premium line of LED fixtures
- lightweight, compact design ideal for use on the most demanding mobile equipment
- customized optics minimize glare and provide precise optical control



Wattage 24W or 48W
Lumens up to 2500 or 4800
Warranty 3 years



Linear & Area Lighting



HDL-LED Series Heavy Duty LED

US Design Patent No. D720,875

- designed to replace linear fluorescent fixtures and up to 400W HID floodlights
- marine grade construction, potted driver and emergency battery backup (EMB) option
- ideal for applications that require hazardous ratings



Wattage 28W, 55W (pictured) or 83W

Lumens 2850, 5700 or 8550

Warranty 5 years



Danger Light™ Heavy Duty LED

- designed to illuminate the “danger zone” surrounding large mobile equipment
- provides a distinct, narrow, red beam to promote safety
- compact design with an adjustable mounting harp



Wattage 42W

Lumens up to 3800

Warranty 5 years



Conveyo™ LED Conveyor Belt Light

- ideal for use on conveyor belts, narrow pathways as well as general wall or pole mount lighting
- hazardous and marine rated options available
- amber and warm white options available



Wattage 50W

Lumens up to 6000

Warranty 3 years



LEDLT LED Tube Light

- instant-on, surface-mounted fixture designed to replace up to a 2 foot, 2 lamp 17W linear fluorescent
- lightweight design and impact resistant housing
- ideal for task lighting and illuminating compact spaces



Wattage 10W

Lumens 1250

Warranty 5 years

Accessway & Flood Lighting



Wayfinder™
LED Accessway Light

Patent Pending

- projects up to 1100 lumens to walkways, stairways and other small areas
- integrated emergency battery backup (EMB) option keeps the fixture illuminated for up to 120 minutes during power interruptions



Wattage 9W
Lumens up to 1100
Warranty 5 years



Cube-Light
Compact LED Area Light

Australian Design No. 359170; US Patent No. D762,321 S

- simple, yet durable 13W LED area light
- compact design makes it ideal for use along accessways and stairways and in small spaces
- wall mount version available as a complete fixture or retrofit kit, an ideal replacement for jelly jar fixtures



Wattage 13W
Lumens up to 1000
Warranty 3 years



SturdiLED®
Super-rough Service LED Floodlight

US Design Patent No. US D708,776

- potted driver, conformal coated circuit board and rugged shock mount base provides maximum vibration resistance
- replaces up to 150W HID or 500W quartz halogen



Wattage 37W
Lumens 2900
Warranty 5 years



ARIES
16W LED Floodlight

- compact, yet durable design
- energy efficient and replaces up to 250W quartz halogen fixtures
- magnetic base accessory makes fixture ideal for task lighting



Wattage 16W
Lumens up to 885
Warranty 5 years



Infrared Imaging System



IS2000
Infrared Imaging System

- designed to operate in harsh environments characterized by shock, vibration and airborne debris
- for use on earth-moving equipment such as shovels, haul trucks and draglines
- Converts the heat signatures of objects in its view into images displayed on in-cab monitor enabling the operator to “see” through dust, rain, snow, smoke and fog
- Increases safety on job sites and raises profitability by reducing down time

Warranty 1 year



Additional Mining Lighting



Ascend Series
Suspension Mounted
LED High Bay Floodlight



Wattage 100W or 230W
Lumens 13,000 or 30,000
Warranty 5 years



DLA 2 *docklite*
9W Modular LED
Loading Dock Light Head



Wattage 9W
Lumens 1200
Warranty 5 years



LFXB LED Series
Explosion-proof LED



Wattage 40W (pictured) or 80W
Lumens up to 4200 or 8400
Warranty 3 years



FlexPro *docklite*
Flexible Arm LED Dock Light



Wattage 10W
Lumens up to 1100
Warranty 3 years



ReadiLED™ Series
LED Snaplight® and Retrofit Kit



Wattage 19W (pictured) or 38W
Lumens 1975 or 3617
Warranty 3 years



**SLX LED/SLXP LED/
DLX LED *docklite***
Explosion-proof LED Floodlights



Wattage 39W
Lumens 2540
Warranty 3-5 years



LEDBM
LED Berth & Mirror Light



Wattage 14W
Lumens up to 520
Warranty 3 years



MRS 64/1000
Super-rough Service Floodlight



Wattage 1000W
Lumens determined by lamp type
Warranty 1 year



Metallic LED VP Series
Vaporproof Fixture



Wattage 17W
Lumens 1336
Warranty 5 years



PHOENIX[®]
DURABILITY X DESIGN[™]

Phoenix Lighting 8711 West Port Avenue Milwaukee, WI 53224 USA
Phone: +1 414.973.3300 Email: mining@phoenixlighting.com www.phoenixlighting.com/mining