

A large blue ship named 'SIKULIAD' is shown at night, illuminated by bright lights. The ship has two large red cranes on deck. The background is a dark blue sky. The ship's name 'SIKULIAD' is visible on the side of the hull.

**PHOENIX<sup>®</sup>**  
*DURABILITY X DESIGN<sup>™</sup>*

**DURABLE LIGHTING**  
**MADE FOR MARITIME<sup>™</sup>**

## Every day, with every light, and for every project ...

... we are committed to durability. As we design, engineer and manufacture our products for the marine industry, we are constantly thinking about sailors and what they need to do their jobs safely and effectively.



## Every night, on ships around the world,

sailors depend on Phoenix lights. From the first light Phoenix built in 1943 to the LED fixture that was installed last week, our product line has been a sequence of innovations inspired by users worldwide and their evolving needs.

With unrivaled marine expertise and the highest level of technology available, Phoenix light fixtures bring a new level of safety and efficiency to the maritime industry.



## Phoenix Lighting BY THE NUMBERS

Just a few of the reasons you can count on Phoenix.

- 6** continents with Phoenix lighting
- 50** years serving the marine industry
- 78** years manufacturing lights
- 129** years in business
- >500,000** LED fixtures

## Our fixtures have been tested and proven ...

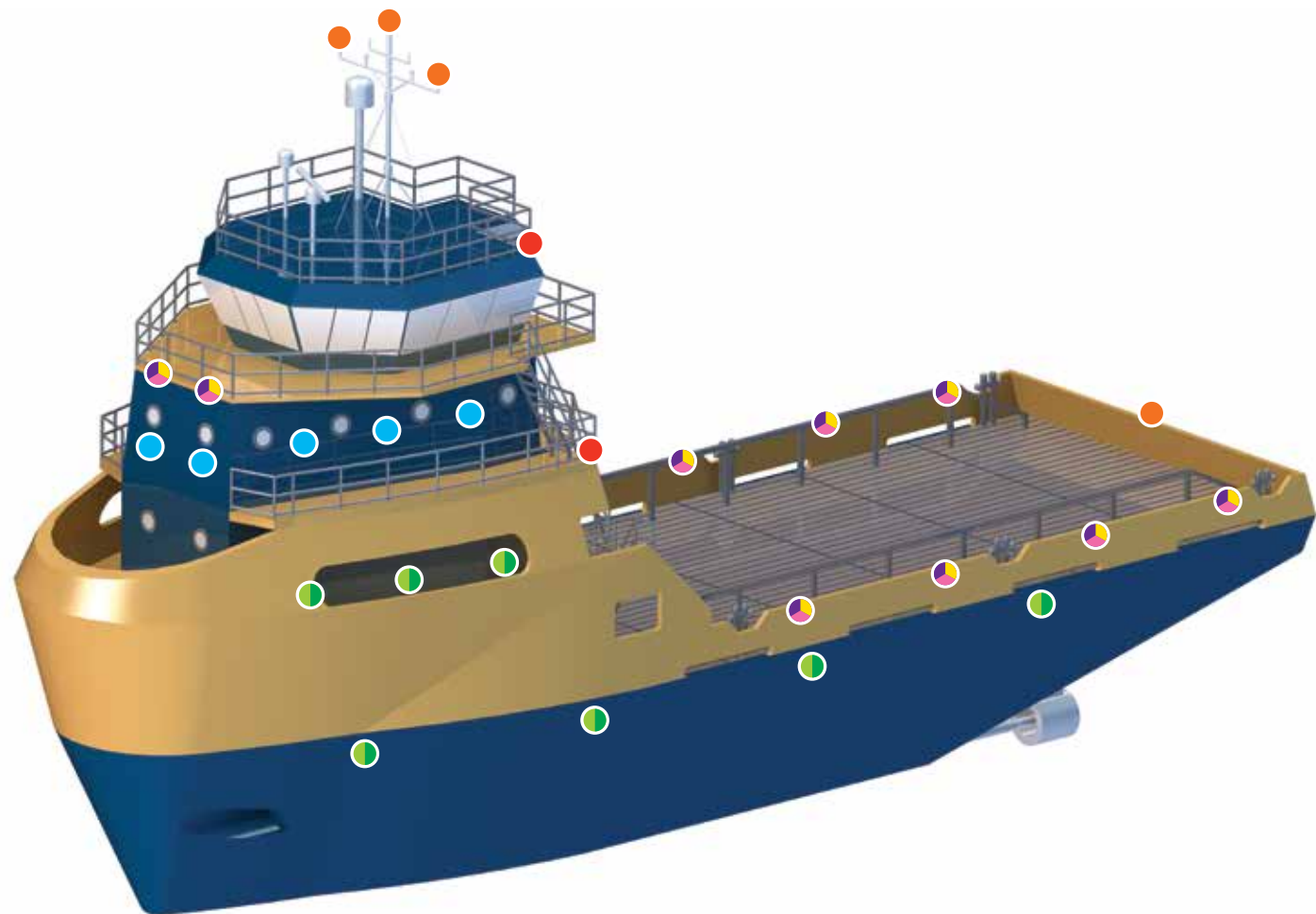
... in the most extreme conditions for over 78 years. We use measures like potted drivers, high quality finishes and marine grade components to ensure our fixtures thrive in the marine environment and last longer than any other option.

We test our fixtures by exposing them to the harsh conditions they are designed for – shock, vibration, extreme water intrusion, salt spray ... Phoenix sends every fixture out the door with the confidence that it will stand up to the challenges of the marine environment.



# Vessel Lighting

## Platform Supply Vessel



### EcoMod® 3 Series

Bulwarks, aft wheelhouse rail and aft deck rail  
pg. 4



### ModCom® 3 Series

Bulwarks, aft wheelhouse rail and aft deck rail when hazardous ratings are required  
pg. 4



### Command Flood® Series

Deck, perimeter and general purpose flood lighting  
pg. 4



### SturdiLED®

Emergency light on interior, lifeboat/davit and embarkation  
pg. 5



# Vessel Lighting



### SturdiSignal™ Series

Navigation light, port, starboard, stern/tow, masthead and all-round (for vessels greater than 20 meters)  
pg. 9



### ReadiLED™ Series

Hold area, interior of main deck and interior of first or second deck  
pg. 8



### HDL-LED Series

Hold area, interior of main deck and interior of first or second deck when hazardous ratings are required  
pg. 8



### Wayfinder™ 2

Low profile locations and doorways, emergency lighting, stairways and walkways  
pg. 6



### Cube-Light

Low profile locations, doorways and indicator lighting  
pg. 6



## Flood & Deck Lighting



**ModCom® 3 Series**  
Hazardous Rated LED Floodlight

**Patents pending**

- The next generation of durable, compact, marine-rated fixtures ideal for above-deck lighting and hazardous locations
- Optional lighting controls that enable color tuning, power monitoring and preventative maintenance notifications
- Custom designed optics maximize fixture performance. A patented no-glare perimeter optic eliminates glare to captain, crew and passing vessels.



**Wattage** up to 121W, 231W (pictured) or 438W  
**Lumens** up to 15000, 30000 or 52500  
**Warranty** 5 years



**EcoMod® 3 Series**  
Heavy Duty LED Floodlight

**Patents pending**

- Durable, compact, surface-mounted fixture designed for general area illumination
- Ideal for installation on vessels, barges or cranes
- Optic options available



**Wattage** up to 121W, 231W (pictured) or 438W  
**Lumens** up to 15000, 30000 or 52500  
**Warranty** 5 years



**Command Flood® Series**  
Marine Grade Floodlight

- Industry-leading above-deck floodlight
- Stainless steel bracket and hardware for maximum corrosion resistance
- Optional, adjustable waterline security bracket with SYM 1218.3 plug (replacement for SYM 303.X)



**Wattage** 150W (pictured), 240W or 360W  
**Lumens** up to 15300, 32000 or 48000  
**Warranty** 5 years



**SturdiLED®**  
Super-rough Service LED Floodlight

**US Design Patent No. US D708,776**

- Potted driver, conformal coated circuit board and rugged shock mount base provides maximum vibration resistance
- Replaces up to 150W HID or 500W quartz halogen
- Available with cool white and red LEDs



**Wattage** 37W  
**Lumens** up to 2900 (5300K), up to 2150 (RED LEDs)  
**Warranty** 5 years



**Sturdilite® Grind**  
18W LED Floodlight

- Compact, yet durable design
- Energy efficient and replaces up to 250W quartz halogen fixtures
- Magnetic base accessory is available



**Wattage** 18W  
**Lumens** up to 2500  
**Warranty** 5 years



**Sturdilite® Master Series**  
Low-voltage LED Floodlight

**US Design Patent No. D993,511**

- Durable, economic LED option for DC applications
- Ideal for workboats and mobile equipment
- Available with cool white and amber LEDs
- HI model available with red LEDs (ALERT)



**Wattage** up to 24W, 48W or 82W  
**Lumens** up to 2500, 5000 or 7600  
**Warranty** 3 years



**Midline™ Flood 2**  
Marine Industrial LED Floodlight

- Made to withstand moisture, shock and vibration of marine environments
- IP66, weatherproof polycarbonate lens
- 316 stainless steel mounting harp for maximum corrosion resistance



**Wattage** 90W  
**Lumens** up to 12000  
**Warranty** 5 years

## Accessway & General Area Lighting



### Wayfinder™ 2 LED Accessway Light

**Patent Pending**

- projects up to 1300 lumens to walkways, stairways and other small areas
- integrated emergency battery backup (EMB) option keeps the fixture illuminated for 6-hour or 2-hour durations during power interruptions
- optional motion sensor for additional energy savings



**Wattage** 3.2W - 11W (field adjustable output)

**Lumens** up to 1300

**Warranty** 5 years



### Cube-Light Compact LED Area Light

**Australian Design No. 359170; US Patent No. D762,321 S**

- Simple, yet durable 13W LED area light
- Compact design makes it ideal for use along accessways and stairways and in small spaces
- Replaces up to 32W compact fluorescent vaporproof fixtures
- Available as a surface mount (shown) and wall mount in both AC and DC



**Wattage** 13W

**Lumens** up to 1000

**Warranty** 3 years



### RDL Recessed Downlight LED

- Indoor recessed LED downlight for shallow ceilings and overhead applications
- A diffuse lens and warm color temperature delivers uniform, pleasant light
- Red lens and emergency battery backup options



**Wattage** 12.5W

**Lumens** 1150 (diffuse) or 150 (red)

**Warranty** 5 years



### Metallic LED VP Series (VA/VB) Vaporproof Fixture & Retrofit Kit

**US Design Patent No. D642,327; US8,348,476 B2; D650,518**

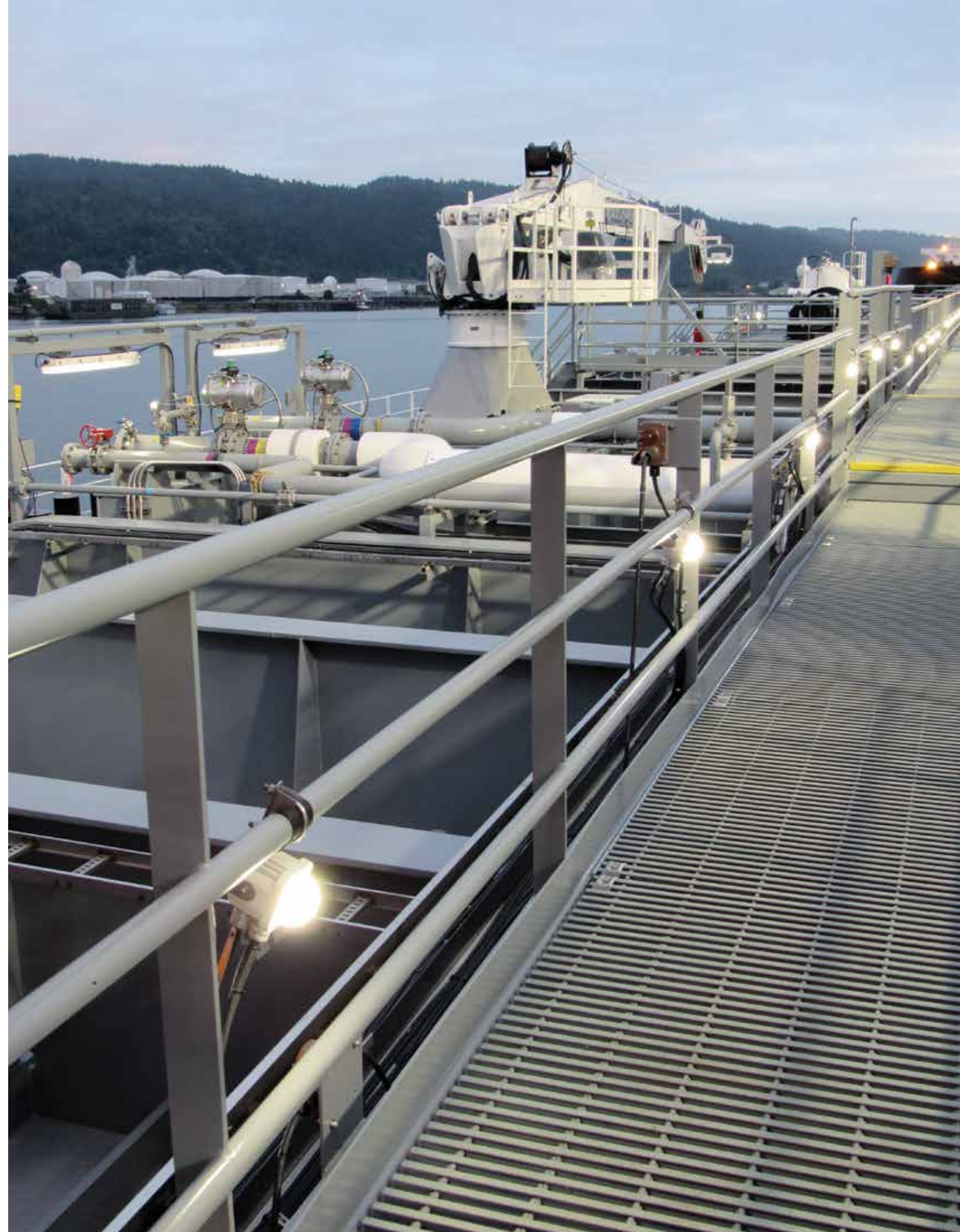
- Available in Aluminum or Brass
- Hazardous and marine-rated vaporproof fixture constructed of marine grade aluminum and fully sealed LED array
- Various colored globe options
- Easily retrofits or replaces up to 75W incandescent jelly-jar, vaporproof fixtures



**Wattage** 17W

**Lumens** 1336

**Warranty** 5 years



## Linear Lighting



### LRMC Series Linear Recessed Marine Ceiling Light

- Built for marine recessed ceiling systems and DAMPA
- Available in 2 and 4 foot models
- Optional 2 hour emergency battery backup (EMB) and switchable red or blue LEDs



**Wattage** 2 foot - 28W (Standard), 12W (Red) or 14W (Blue); 4 foot - 48W (Standard), 19W (Red) or 25W (Blue) or 96W (HO high output option)

**Lumens** 2 foot - up to 3200 lumens (Standard), 800 lumens (Red) or 400 lumens (Blue); 4 foot - up to 5400 lumens (Standard), 1300 lumens (Red) or 700 lumens (Blue); 10000 lumens (HO - high output option)

**Warranty** 5 years



### LFXB LED Series Explosion-proof Linear LED

- Incorporates modern technology with the durability of Phoenix's original LFXB fixtures
- Competitively priced in 2 and 4 foot models
- Available with cool white or warm white LEDs and a 90 minute EMB option



**Wattage** 40W (pictured) or 80W

**Lumens** 4200 or 8400

**Warranty** 3 years



### ReadiLED™ Series LED Snaplight® and Retrofit Tray

- Enhances safety and security for marine vessels and their crews
- Easily retrofits or replaces existing linear fluorescent fixtures
- Requires virtually no maintenance and eliminates lamp disposal concerns
- Emergency battery backup (EMB) option keeps the fixture illuminated for 120 minutes during power interruptions



**Wattage** 19W (pictured) or 38W

**Lumens** 2400 or 5400

**Warranty** 3 years



### HDL-LED Series Heavy Duty LED

**US Design Patent No. D720,875**

- Designed to replace linear fluorescent fixtures and up to 400W HID floodlights
- Marine grade construction and potted driver
- Ideal for applications that require hazardous ratings
- Optional 90 minute emergency battery backup (EMB)



**Wattage** 28W, 55W (pictured) or 83W

**Lumens** 2850, 5700 or 8550

**Warranty** 5 years



### SturdiSignal™ Series LED Navigation Light

- Modular design allows for toolless maintenance at sea, no electrician required
- Provides safe and reliable illumination up to 6 nautical miles
- Built-in sensor continuously monitors LED brightness



**Wattage** up to 5W

**Warranty** 5 years



### LEDBM LED Berth & Mirror Light

- Interior, below-deck LED fixture suited for berth/mirror lighting
- Provides energy savings, long life and low maintenance costs
- Available with and without two USB ports, switch and 120V convenience outlet



**Wattage** 14W

**Lumens** up to 520

**Warranty** 3 years

## Navigation Lighting



### SLXP LED Explosion-proof Portable LED Floodlight

- Hazardous location and NEMA 4X rated
- Marine rated for outside saltwater
- Replaces up to 70W HID



**Wattage** 44W

**Lumens** up to 3800

**Warranty** 5 years



# PHOENIX<sup>®</sup>

DURABILITY X DESIGN™

Phoenix Lighting 8711 West Port Avenue Milwaukee, WI 53224 USA  
Phone: +1 414.973.3300 Email: [marine@phoenixlighting.com](mailto:marine@phoenixlighting.com) [www.phoenixlighting.com/marine](http://www.phoenixlighting.com/marine)