

Designed to replace SYM 263.3
US Design Patent No. US D708,776

Extreme shock and vibration resistance; designed
to replace low-wattage floodlights

Corrosion resistant above deck lighting ideal for marine vessels

Durable, compact design for the world's harshest environments

LED technology increases efficiency, eliminates
maintenance and supports green initiatives



Key Applications

Designed to replace UNREP & CONREP Station Lighting
Designed to replace SYM 263.X
Designed to replace SYM 316 & SYM 317 (with reducer)
Navy & US Coast Guard lighting

Compliances

ETL/cETL Certified to:

- UL 1598 Suitable for Wet Locations
- UL 1598A Marine Outside Type (Saltwater)
- CSA C22.2 No. 250.0

CE

ABS

IP67 rated

LM79 and LM80 reports available

Buy American Act (BAA)

Build America Buy America Act (BABA)

Specifications

Construction	Marine grade cast aluminum housing
Finish	Gray (GRY) or White (WHT) thermoset powder coat finish
Hardware	Marine grade (316) stainless steel external hardware
Lens	Impact-resistant, UV-stable polycarbonate Replaceable Spot (28°) or flood (45°) beam angles
Light source	4,000 LEDs, 3,900 lumens, 37W (40K) Red LEDs, 2,000 lumens, 37W (RED) Amber LEDs, 2,700 lumens, 37W (AMB) Blue LEDs, 1,000 lumens, 37W (BLU) Cyan NVIS/NVD LEDs, up to 750 lumens, up to 20W (CYN) 50,000 hour rated life
Power source	120V triac/line voltage dimming (120LVD) Replaceable
Wiring	10 foot (3048 mm) cord with SYM 1218.3 plug - standard
Ambient operating temperature	-30°C to +50°C
Mounting	Surface or pole mount - standard (NPL) Capable of accommodating 1-3/8 inch pipe and 2-1/8 inch pipe
Visor	Protects lens, directs light and reduces glare - standard
Warranty	3 years

For IES files, see website or contact factory



This product complies with domestic preference requirements such as BABA. For additional information, visit phoenixlighting.com or consult your representative.



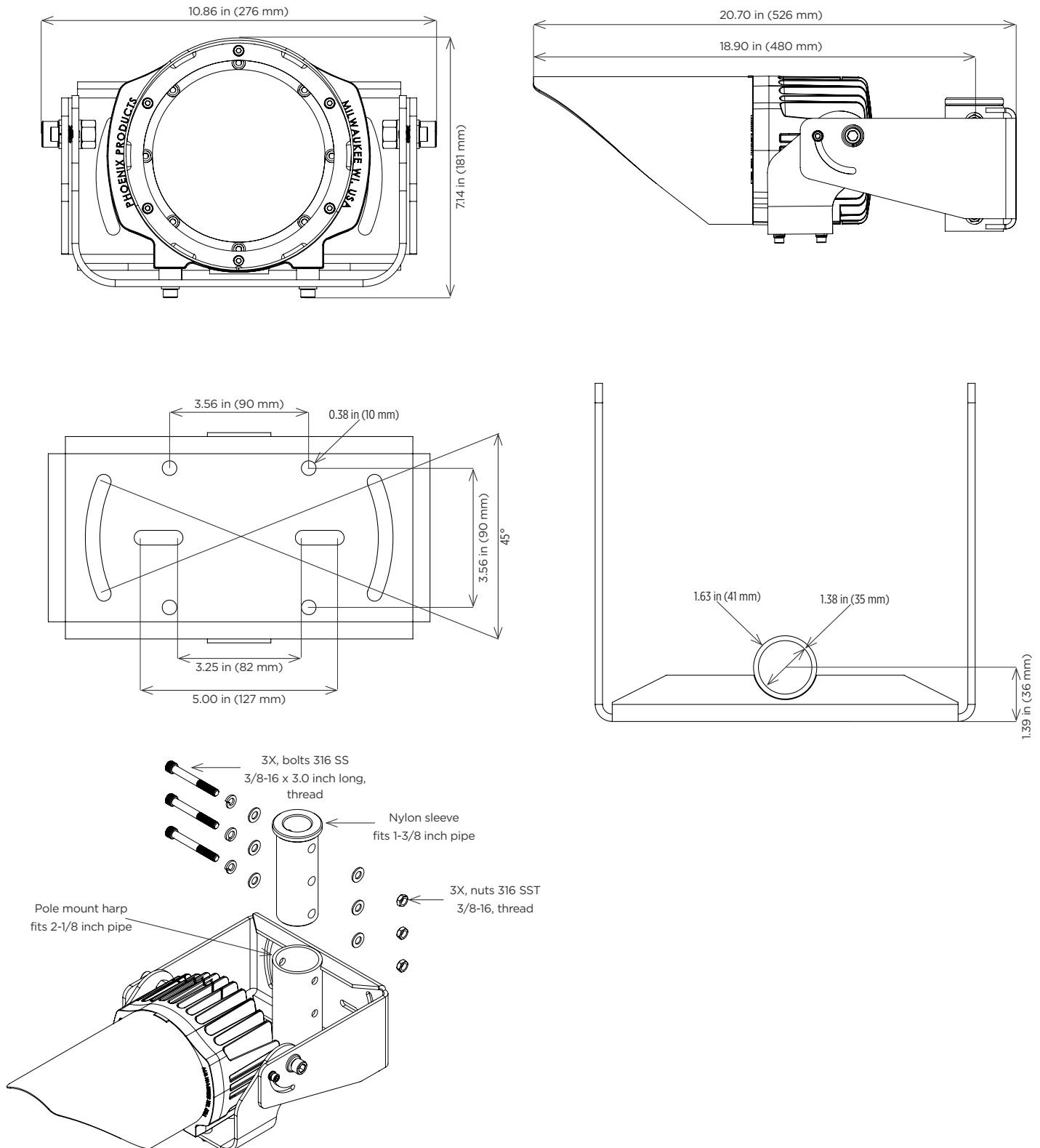
This product complies with domestic preference requirements such as BAA or TAA. For additional information, visit phoenixlighting.com or consult your representative.

SturdiLED® LVD

Marine Grade LED Floodlight

PHOENIX®
DURABILITY X DESIGN™

Dimensions



Ordering Information

Example: STL-HI-28-120LVD-40K-GRY-EV-NPL

Fixture	Model	Beam Angle	Voltage	LEDs	Finish	Options
STL	HI	28	120LVD ¹	40K ²	GRY	EV
		45		RED	WHT	NPL
				AMB		
				CYN ²		
				BLU ²		

Beam Angle		Voltage	LEDs	Finish
28	Spot (28°) beam angle	120LVD ¹ 120V line voltage dimmable	40K ² 4000K LEDs	GRY gray powder coat
45	Flood (45°) beam angle		RED Red LEDs	WHT white powder coat
			AMB Amber LEDs	
			CYN ² Cyan NVIS/ NVD LEDs	
			BLU ² Blue LEDs	

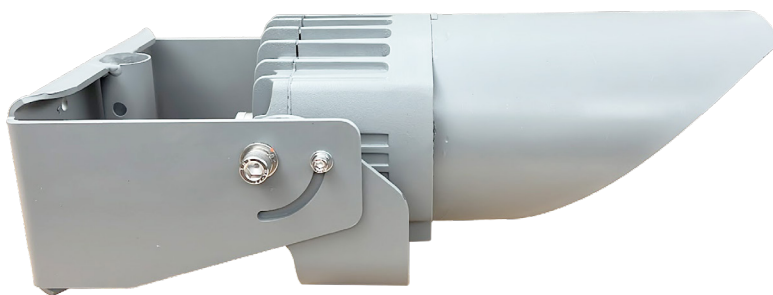
Options

EV	extended visor
NPL	adjustable waterline security bracket - standard

Notes

- 1 Provided with 10 foot (3048 mm) cord with SYM 1218.3 plug standard.
- 2 Please contact factory for lead time.

Special Projects: We may be able to accommodate your special projects, so please don't hesitate to ask about additional options. Minimum order quantities and/or extended lead times will apply. Contact your Phoenix representative with specific inquiries.



STL-HI-28-120LVD-40K-WHT-EV-NPL (shown)