

Designed to replace SYM 263.3
US Design Patent No. US D708,776

Extreme shock and vibration resistance; designed
to replace low-wattage floodlights

Corrosion resistant above deck lighting ideal for marine vessels

Durable, compact design for the world's harshest environments

LED technology increases efficiency, eliminates
maintenance and supports green initiatives



Key Applications

Designed to replace UNREP & CONREP Station Lighting
Designed to replace SYM 263.X
Designed to replace SYM 316 & SYM 317 (with reducer)
Navy & US Coast Guard lighting

Compliances

ETL/cETL Certified to:

- UL 1598 Suitable for Wet Locations
- UL 1598A Marine Outside Type (Saltwater)
- CSA C22.2 No. 250.0

CE

ABS

IP67 rated

LM79 and LM80 reports available

Buy American Act (BAA)

Build America Buy America Act (BABA)

Specifications

Construction	Marine grade cast aluminum housing
Finish	Gray (GRY) or White (WHT) thermoset powder coat finish
Hardware	Marine grade (316) stainless steel external hardware
Lens	Impact-resistant, UV-stable polycarbonate Replaceable Spot (28°) or flood (45°) beam angles
Light source	4000K LEDs, up to 3,900 lumens (40K) Red LEDs, up to 2,000 lumens (RED) Amber LEDs, up to 2,700 lumens (AMB) Cyan NVIS/NVD LEDs, up to 1,700 lumens (CYN) Blue LEDs, up to 1,000 lumens (BLU) 37W 50,000 hour rated life
Power source	120V triac/line voltage dimming (120LVD) Replaceable
Wiring	10 foot (3048 mm) cord with SYM 1218.3 plug - standard
Ambient operating temperature	-30°C to +50°C
Mounting	Surface or pole mount - standard (NPL) Capable of accommodating 1-3/8 inch pipe and 2-1/8 inch pipe
Visor	Protects lens, directs light and reduces glare - standard
Warranty	3 years



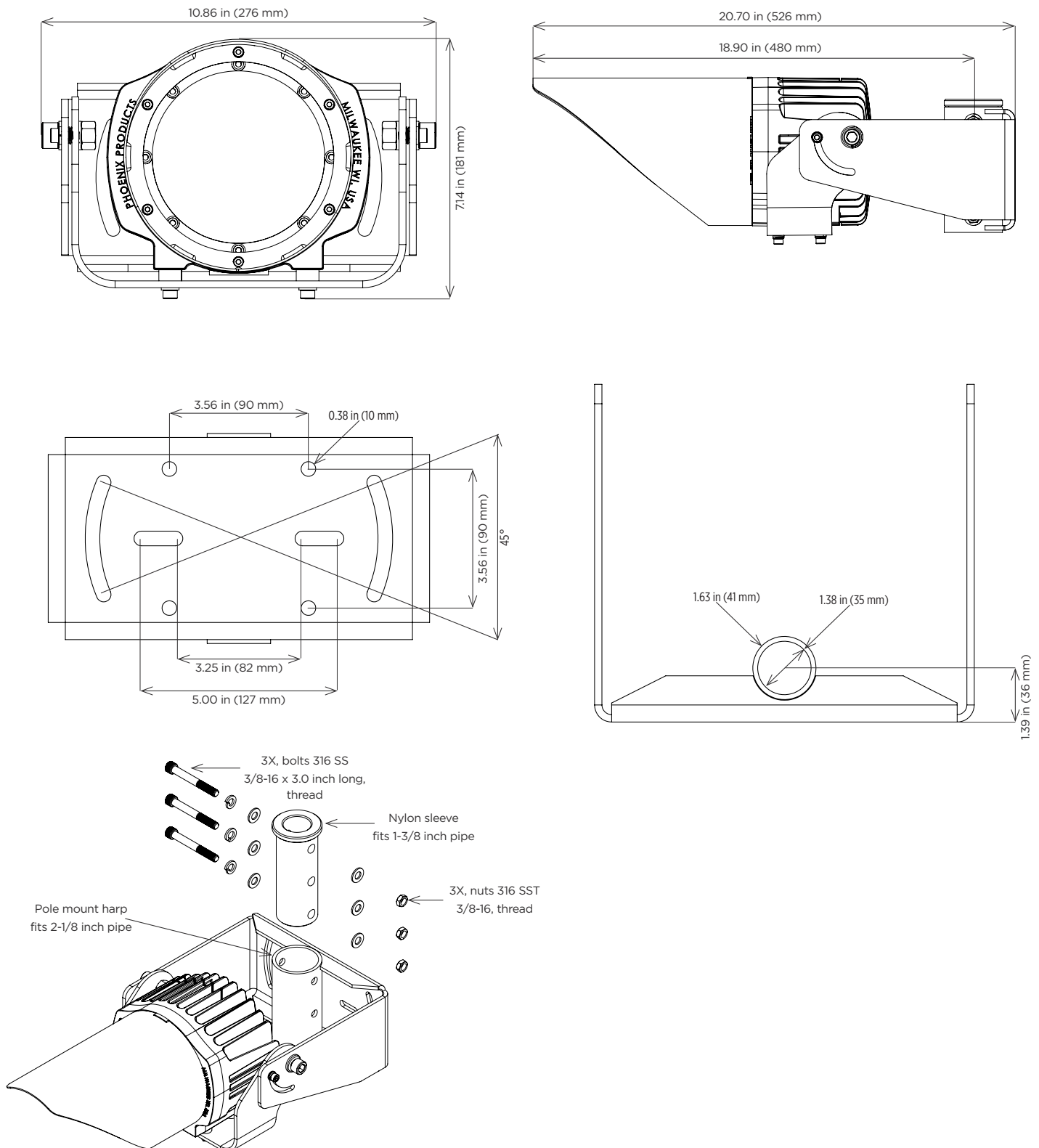
This product complies with domestic preference requirements such as BABA. For additional information, visit phoenixlighting.com or consult your representative.



This product complies with domestic preference requirements such as BAA or TAA. For additional information, visit phoenixlighting.com or consult your representative.

For IES files, see website or contact factory

Dimensions



Ordering Information

Example: STL-HI-28-120LVD-40K-GRY-EV-NPL

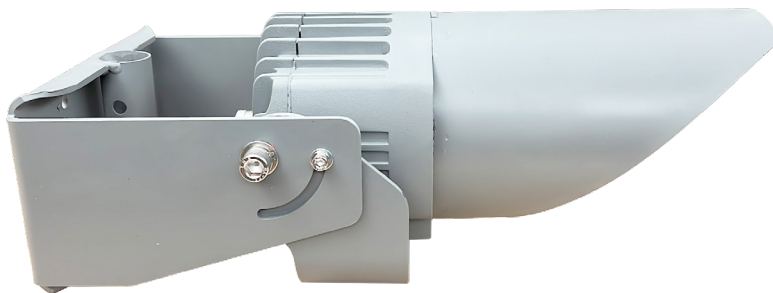
Fixture	Wattage	Beam Angle	Voltage	LEDs	Finish	Options
STL	HI	28	120LVD ¹	40K ²	GRY	EV
		45		RED	WHT	NPL
				AMB		
				CYN ²		
				BLU ²		

Wattage		Beam Angle		Voltage		LEDs	
HI	37W	28	Spot (28°) beam angle	120LVD ¹	120V line voltage dimmable	40K ²	4000K LEDs
		45	Flood (45°) beam angle			RED	Red LEDs
						AMB	Amber LEDs
						CYN ²	Cyan NVIS/ NVD LEDs
						BLU ²	Blue LEDs
Finish		Options					
GRY	gray powder coat	EV	extended visor				
WHT	white powder coat	NPL	adjustable waterline security bracket - standard				

Notes

- 1 Provided with 10 foot (3048 mm) cord with SYM 1218.3 plug standard.
- 2 Please contact factory for lead time.

Special Projects: We may be able to accommodate your special projects, so please don't hesitate to ask about additional options. Minimum order quantities and/or extended lead times will apply. Contact your Phoenix representative with specific inquiries.



STL-HI-28-120LVD-40K-WHT-EV-NPL (shown)