



## Super-rough Service LED Floodlight

US Design Patent No. US D708,776

Extreme shock and vibration resistance; designed to replace low-wattage floodlights

For use on shovels, blasthole drills, utility vehicles, towers and other demanding applications

Durable, compact design for the world's harshest environments

LED technology increases efficiency, eliminates maintenance and supports green initiatives

## Key Applications

Navy & Coast Guard approved light source  
General deck lighting  
Embarkation lighting  
Deck winch lighting  
Davits, lifeboats & life raft stations  
Deck mounted cranes (OSV, PSV)  
Small area flood lighting  
Tugboat and push boat lighting  
Shovels  
Blast hole drills  
Wheel buckets  
Dragline track lighting  
Maintenance lighting  
Inspection station lighting  
Industrial task lighting  
Port crane gantry lighting  
Logo lighting  
Truck lanes  
Work platforms

## Compliances

ETL/cETL Certified to:

- UL 1598 Suitable for Wet Locations
- UL 1598A Marine Outside Type (Saltwater)
- CSA C22.2 No. 250.0

CE

ABS

IP67 rated

LM79 and LM80 reports available

Buy American Act (BAA)



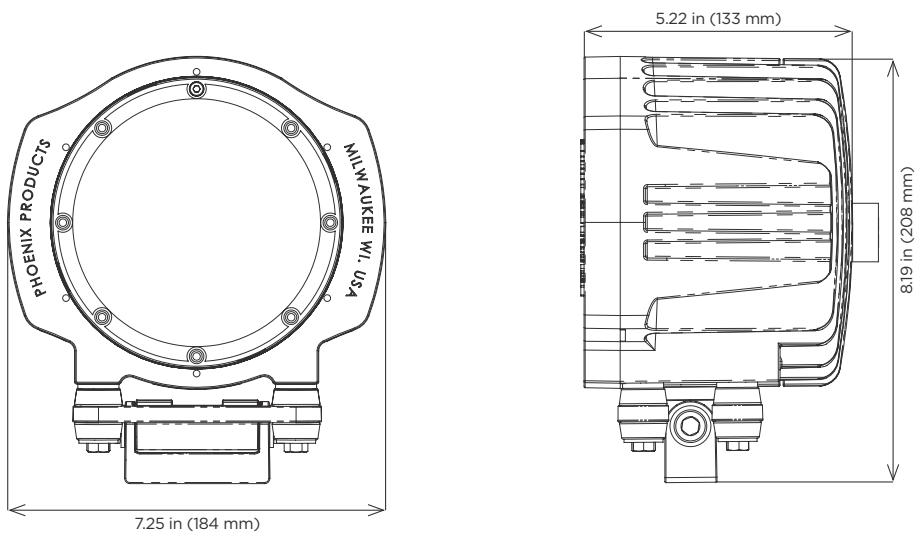
*This product complies with domestic preference requirements such as BAA or TAA. For additional information, visit [phoenixlighting.com](http://phoenixlighting.com) or consult your representative.*

## Specifications

Construction	Marine grade cast aluminum housing
Finish	Durable 2-step powder coat finish Black is standard White (WHT) is optional
Hardware	Marine grade (316) stainless steel external hardware
Lens	Impact-resistant, UV-stable polycarbonate Replaceable Flood (45°) beam angle - standard Spot (28°) accessory kit (STL-28D)
Light source	Up to 4000 lumens, 5000K LEDs, CRI >70 2150 lumens, red LEDs, 625nm (RED) 37W Conformal coated circuit board 50,000 hour rated life
Power source	120-277V, 50/60Hz (UNIV) Fully potted Replaceable Over-voltage, over-current and short-circuit protection
Wiring	72.00 inch (1829 mm) cord with pigtail NEMA 5-15 plug accessory kit
Ambient operating temperature	-30°C to +50°C
Mounting	Shock mount base (provided with captive M10 bolt) - standard Stainless Steel Harp Kit (STL-HRP) Four (4) Bolt Retrofit Kit (STL-4B)
Weight	Fixture: 9.5 lb (4.3 kg) Packaged: 11.0 lb (5.0 kg)
Visor accessory	Protects lens, directs light and reduces glare (STL-VIS)
Warranty	5 years

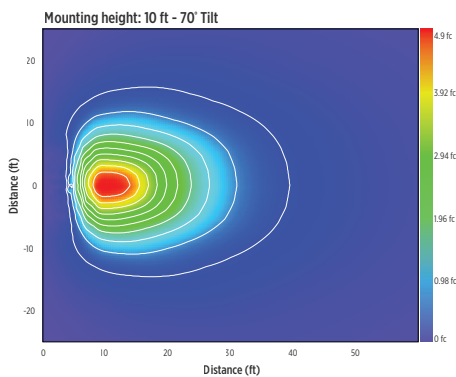
For IES files, see website or contact factory

## Dimensions

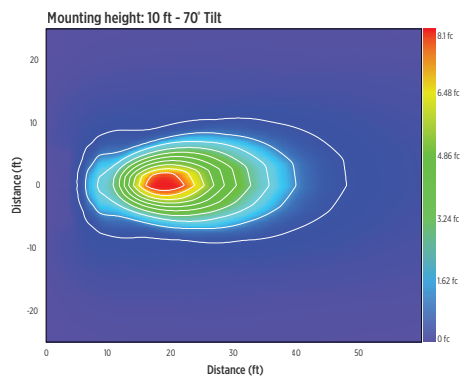


## Isolux Charts

### 45° Beam (standard)



### 28° Beam (accessory kit)



## Ordering Information

Example: STL-HI-45-UNIV

Fixture	Wattage	Beam Angle	Voltage	Finish	LEDs <sup>1</sup>
STL	HI	45	UNIV	WHT <sup>2</sup>	RED

### Wattage

HI Up to 4000 lumens (37W)

### Beam Angle

45 Flood (45°) beam angle

### Voltage

UNIV 120-277V, 50/60Hz

### Finish

WHT<sup>2</sup> White powder coat

### LEDs<sup>1</sup>

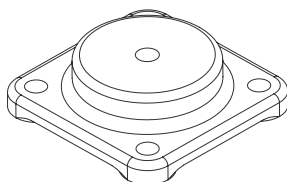
RED Red LEDs, 625nm, 2150 lumens

### Notes

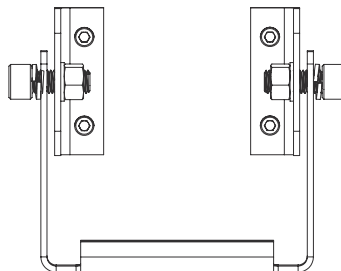
- 1 Leave blank for standard white (5000K) LEDs.
- 2 Leave blank for black powder coat.

**Special Projects:** We may be able to accommodate your special projects, so please don't hesitate to ask about additional options. Minimum order quantities and/or extended lead times will apply. Contact your Phoenix representative with specific inquiries.

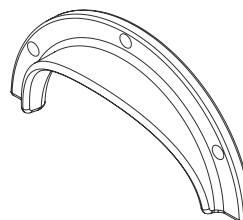
## Accessories (order separately)



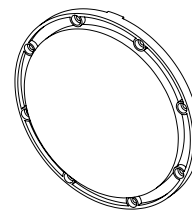
**Four (4) Bolt Retrofit Kit**  
STL-4B



**Stainless Steel Harp Kit**  
STL-HRP



**Visor Kit**  
STL-VIS



**28° Lens Kit**  
STL-28D

**NEMA 5-15 Plug Kit**  
PLG-515