

! CAUTION

- All wiring should be done by a licensed electrician in accordance with state codes, local codes and National Electric Code (NEC) standards.
- Improper installation may result in serious injury and void warranty.
- Contains parts and assemblies susceptible to damage by electrostatic discharge (ESD).

Wiring

Install the male plug from the arm assembly into the nearest 120V AC supply outlet. A rocker-type switch is built into the arm to allow the light source to be switched on and off without unplugging the unit.

Mounting

The FLEX LED is designed for wall mounting and requires a flat vertical surface 5 inches wide and 7 inches high. If a large number of fixtures are to be installed, we suggest removing the support bracket from one fixture for use as a template to locate mounting holes. Four (4) 3/8 inch bolts are required for mounting.

For the most efficient operation, we suggest mounting the fixture so that the light head, in a level position, can be placed into the top corner of the lowest trailer utilizing the loading location. It should also be mounted as close to the door or opening edge as is practical. For safety, the wall bracket should be mounted high enough to be out of the way of pedestrian and equipment traffic. Do not mount in a manner that will allow the wall arm to be trapped under an overhead door as it is closing. The fixture should be mounted where it will not be directly exposed to the elements.

For accessibility, note the location of the switch before mounting.

Aiming

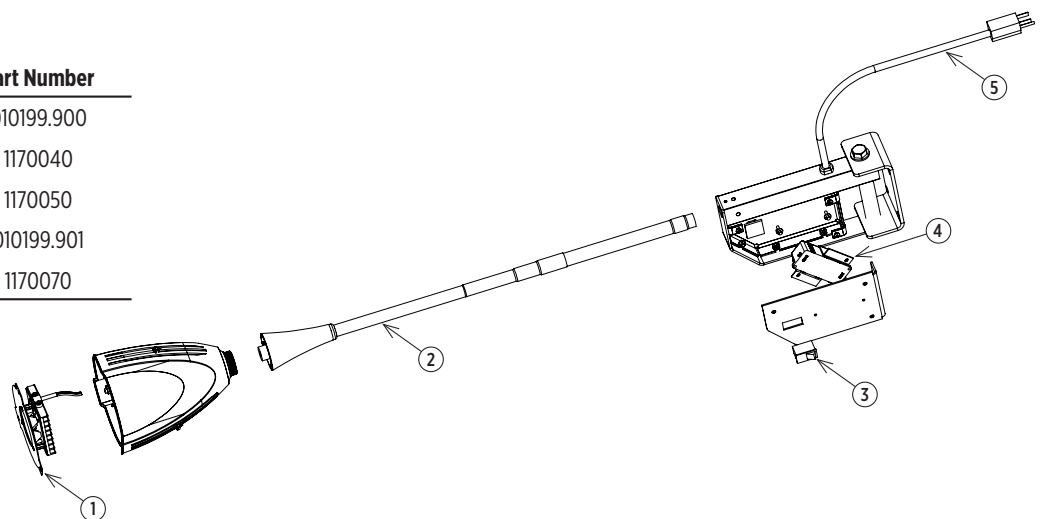
Install fixture according to "Mounting" instructions above. Position the fixture with the arm in a straight line. Place one hand on the light head and the other hand on the flexible arm. Please reference "Installing and Aiming the Phoenix Flexible LED docklite[®]" instructions also included in packaging.

For optimal performance, the fixture is designed to be positioned in one long continuous curve.

- Do not overbend
- Keep away from lubricants
- Do not use sharp curves at either endpoint
- Do not position fixture along reinforced arm as this will not hold a curve

Repair Parts List

Item	Description	Part Number
1	LED assembly	010199.900
2	flexible arm	1170040
3	rocker switch	1170050
4	driver	010199.901
5	supply cord	1170070



Product design and specifications are subject to change without notice.

