

# SturdiSignal™ Control Panel

## Navigation Light Monitoring & Control System

Compact, touch screen interface for navigation light monitoring and control

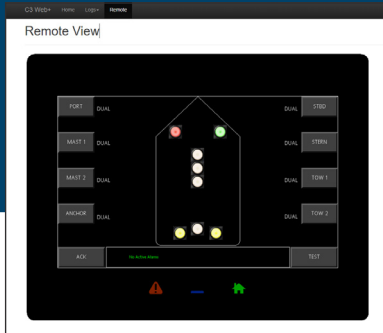
Scalable from 2 to 30 lights

Automatic switchover if light fails or current drops below COLREGS

Modular design using ABS type approved components allow for easy expansion and combination of LED or conventional lights

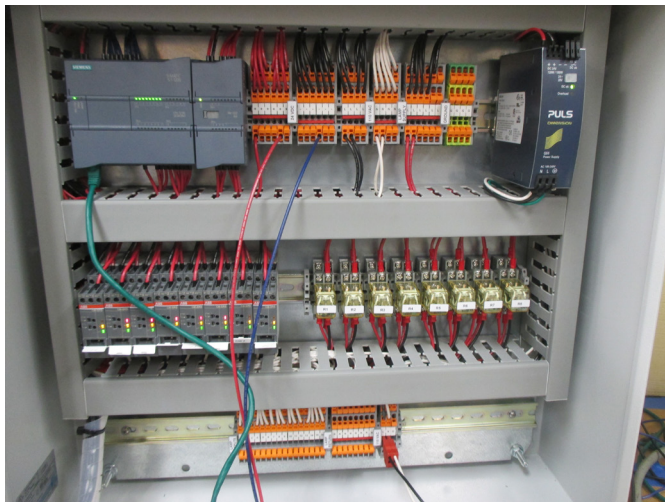
Conforms to IMO MSC 253 (83)

Remote control for autonomous operation (optional)



### Specifications

<b>Display</b>	Full-color LCD touch panel 4.30 inch, 5.70 inch and 7.00 inch panel sizes
<b>Number of lights</b>	Scalable up to 30 lights
<b>Power</b>	24V DC, 115V AC, 230V AC
<b>Notification</b>	Visual and audible alarm, quick touch reset Remote monitoring (optional)
<b>Control panel</b>	20.00 inch x 20.00 inch panel, NEMA 4 enclosure, IP66 rated
<b>Communication</b>	Ethernet 10 Base T/100 Base-TX, RS-232/485 connectivity
<b>Dimensions</b>	2.2 lbs (1 kg) 6.00 inch (152 mm) height 3.50 inch (89 mm) diameter
<b>Application</b>	Vessels greater than 20 m in length
<b>Ambient operating temperature</b>	-20°C to +60°C



### Compliances

IMO Resolution MSC 253 (83) 4.3



# SturdiSignal™ Control Panel

Navigation Light Monitoring & Control System

**PHOENIX**<sup>®</sup>  
DURABILITY X DESIGN™

powered by **Rio**  
CONTROLS & HYDRAULICS

## Ordering Information

---

[SturdiSignal™ Control Panel Ordering Checklist](#)

Product design and specifications are subject to change without notice. The most current version of this specification sheet can be found on our website: [www.phoenixlighting.com](http://www.phoenixlighting.com).



Phoenix Lighting 8711 West Port Avenue Milwaukee, WI 53224 USA  
Phone: +1 414.973.3300 Toll Free: 800.438.1214 Fax: +1 414.973.3210 [www.phoenixlighting.com](http://www.phoenixlighting.com)

N5499774A  
07.15.21