



Guard Pro™ LO

Industrial LED Low Bay/Area Light

Versatile fixture with various light output, mounting, lens, optic, and color temperature options making it suitable for many applications

Capable of retrofitting to various Eaton Crouse Hinds and Appleton MercMaster III fixtures

Key Applications

Heavy industrials storage facilities
Power generation
Processing facilities
Factories/manufacturing facilities
Warehouses
Distribution centers

Compliances

UL/cUL Listed to:

- UL 1598 Suitable for Wet Locations
- UL 1598A Marine Outside Type (Saltwater)

IP66
ABS

Specifications

Construction	Die cast aluminum
Finish	Powder coat, matte finish
Hardware	Marine grade (316) stainless steel external hardware
Light source	2,600 lumens – 20W 5,200 lumens – 40W 7,800 lumens – 60W CRI > 70 CCT 3000K, 4000K, 5000K 60°, 120° or Type II optic options 50,000 hour rated life
Lens	Flat glass - clear or diffuse Convex glass - clear or diffuse
Wiring	3/4 NPT
Power source	120-277V, 50-60 Hz; 277-480V, 50-60 Hz 0-10V dimming capability
Surge protection	6kV surge protection (driver)
EMB	Emergency battery backup 90 minute duration, 1000 lumens
Ambient operating temperature	GPL-20: -40°C to + 65°C (T5) GPL-40: -40°C to + 65°C (T5) GPL-60: -40°C to + 60°C (T3C)
Mounting	Surface mount (standard) Optional harp mount, stanchion mount, wall mount, and retrofit adapter (Appleton Mercmaster III) capability Standard fixture is compatible with Crouse-Hinds™ series HID mounting base
Estimated weight	13.4 lb (6.1 kg)
Warranty	5 years

For IES files, see website or contact factory

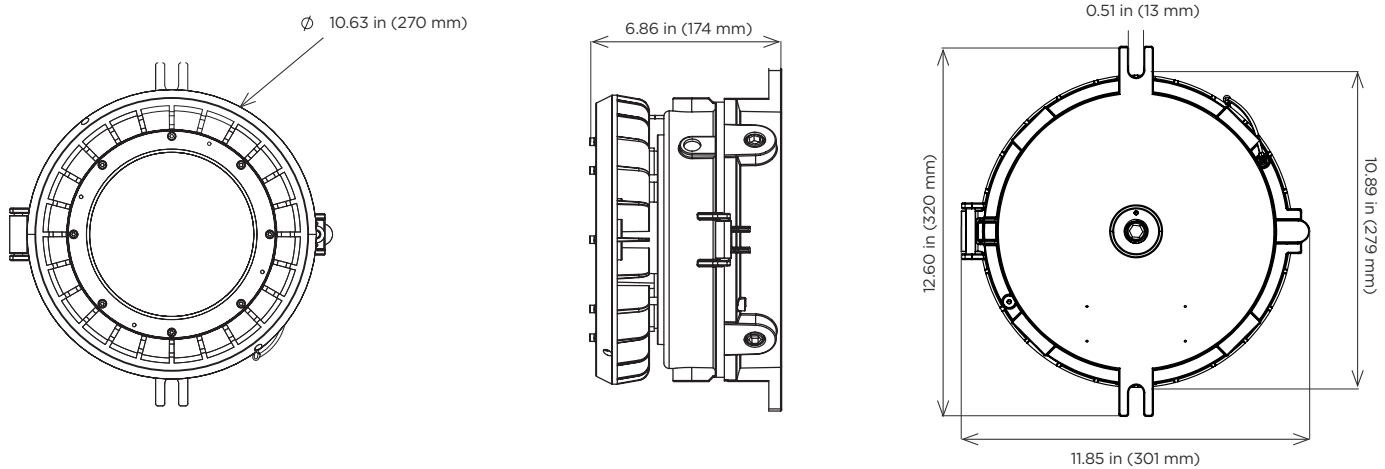
Guard Pro™ LO

Industrial LED Low Bay/Area Light

PHOENIX®
DURABILITY X DESIGN™

Dimensions

Surface Mount (standard)



Ordering Information

Example: GPL-20-FGC-60-120-277-30K

Fixture	Wattage	Lens	Optics	Voltage	CCT	Mounting ²	Option
GPL	20	FGC	60 ¹	120-277	30K	B	EMB
	40	FGD	120	277-480	40K	C	
	60	CGC	T2		50K	D	
		CGD				R ³	

Wattage		Lens		Voltage		Optics		Options		Mounting ²		Option	
20	Up to 2,600 lumens, 20W	FGC	Flat glass, clear lens	120-277	120-277V, 50-60Hz	60 ¹	60° optic	30K	3000K	B	Mounting harp	EMB	90 minute emergency battery backup
40	Up to 5,200 lumens, 40W	FGD	Flat glass, diffuse lens	277-480	277-480V, 50-60Hz	120	120° optic	40K	4000K	C	Wall mount		
60	Up to 7,800 lumens, 60W	CGC	Convex glass, clear lens			T2	Type II optic	50K	5000K	D	Stanchion mount		
		CGD	Convex glass, diffuse lens							R ³	Retrofit adapter		

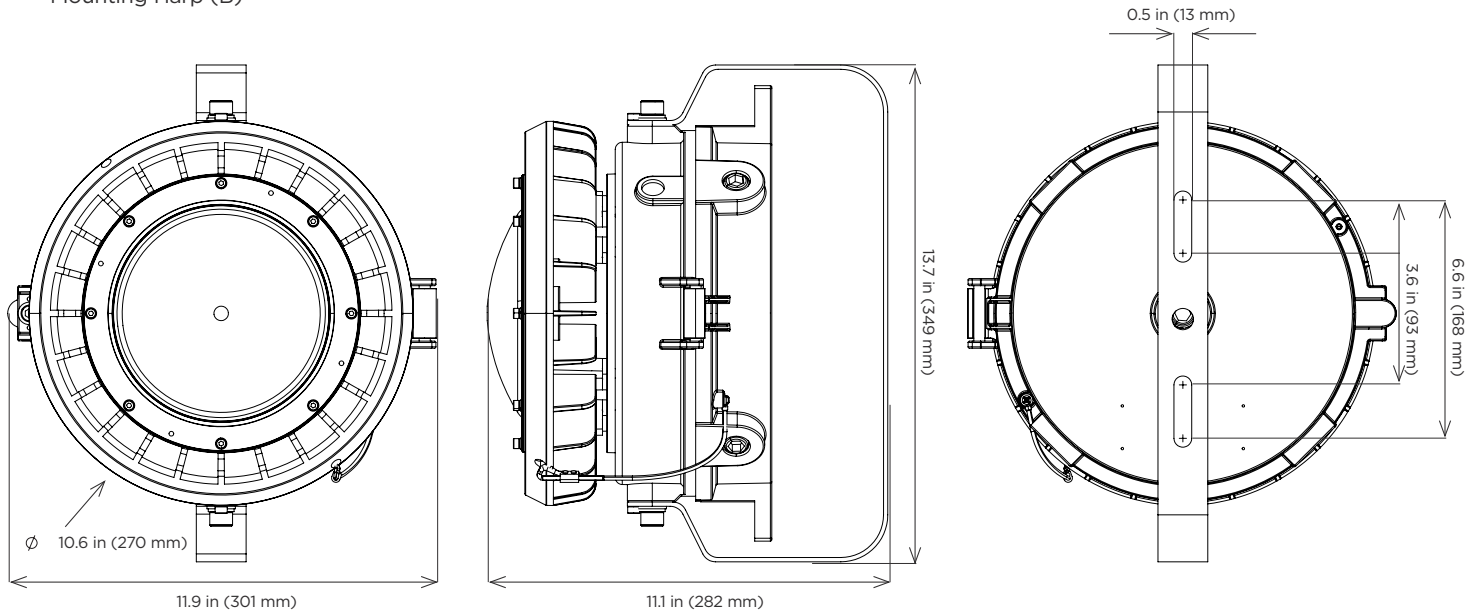
Notes

- 1 Only available with clear lens options.
- 2 Comes standard with surface mount (leave blank).
- 3 Fixture provided with Appleton MercMaster III retrofit adapter.

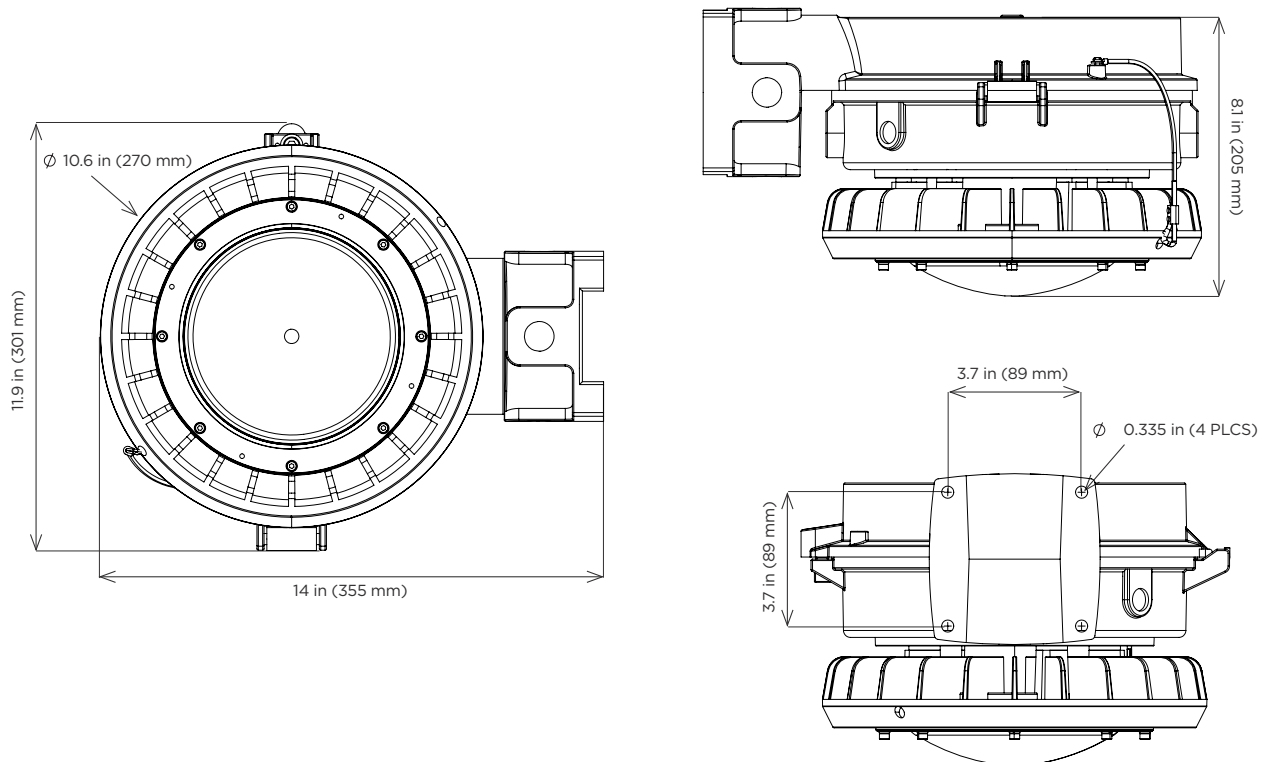
Special Projects: We may be able to accommodate your special projects, so please don't hesitate to ask about additional options. Minimum order quantities and/or extended lead times will apply. Contact your Phoenix representative with specific inquiries.

Mounting Options

Mounting Harp (B)



Wall mount (C)



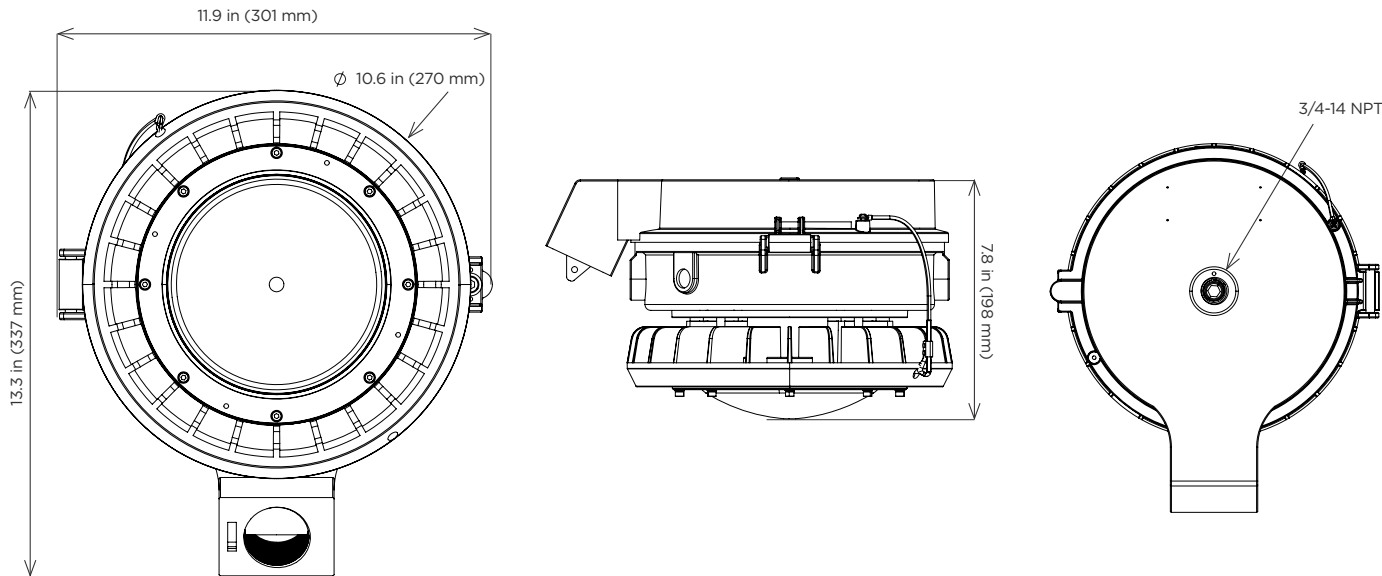
Guard Pro™ LO

Industrial LED Low Bay/Area Light

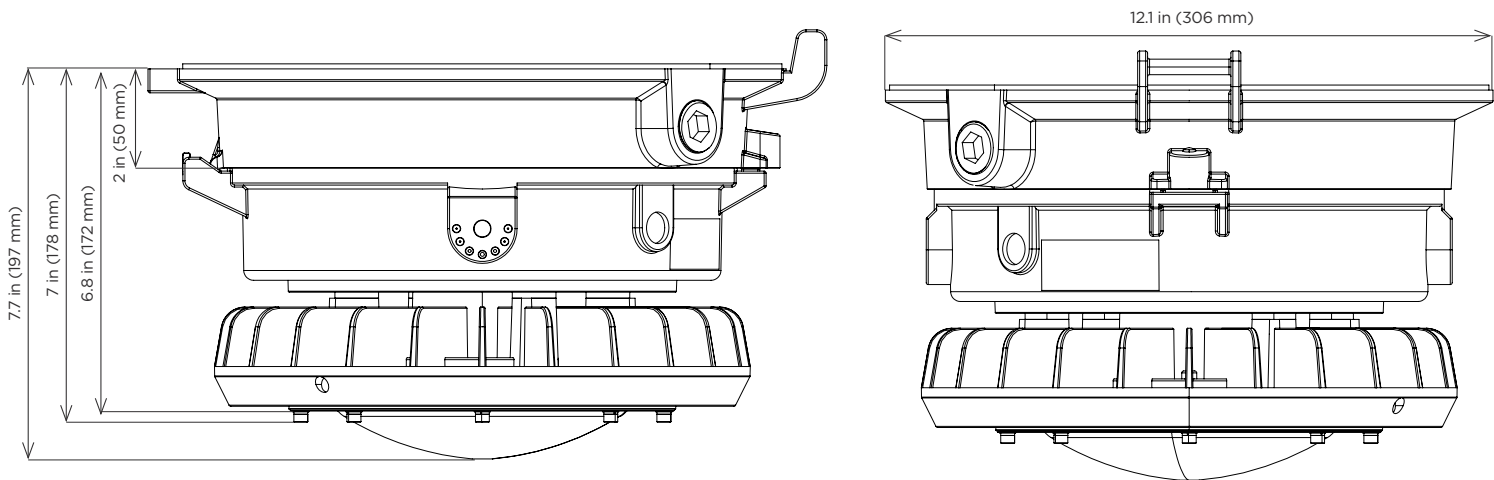


Mounting Options Continued

Stanchion mount (D)

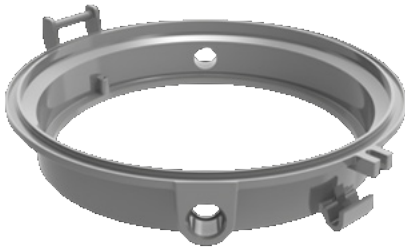


Retrofit adapter (R)



Phoenix Guard Pro Retrofit Adapter for Appleton Mercmaster III

Pendant	Ceiling	Wall	Stanchion
KPA - 75, 100	KPC - 75	KPWB - 75	KPS - 125
KPAF - 75, 100	KPC - 100	KPWB -100	KPS -150
KPCH - 75, 100			KPST - 125
			KPST - 160



Retrofit Adapter - Appleton MercMaster III

Retrofit Capability (standard fixture)

Phoenix Guard Pro directly retrofits to Eaton Crouse Hinds models listed below (no additional parts needed)

Pendant	Ceiling	Wall	Stanchion	Quad Mount
APM2	CM2	TWM2	M5	QM25
AMP3	CM3	TWM3	PM5	
HM2				

Accessories

Wire Guard
(WG-GPL)

Product design and specifications are subject to change without notice. The most current version of this specification sheet can be found at www.phoenixlighting.com.