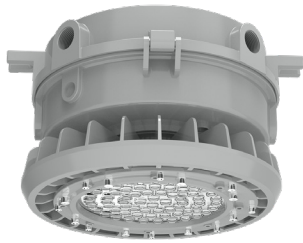


! CAUTION

- All wiring should be done by a licensed electrician in accordance with state codes, local codes, and National Electrical Code (NEC) or International Electrotechnical Commission (IEC) standards.
- Improper installation may result in serious injury and void warranty.
- Contains parts and assemblies susceptible to damage by electrostatic discharge (ESD).
- Surge protective devices should be utilized for fixtures installed in environments subject to power surges outside the specified operating parameters.



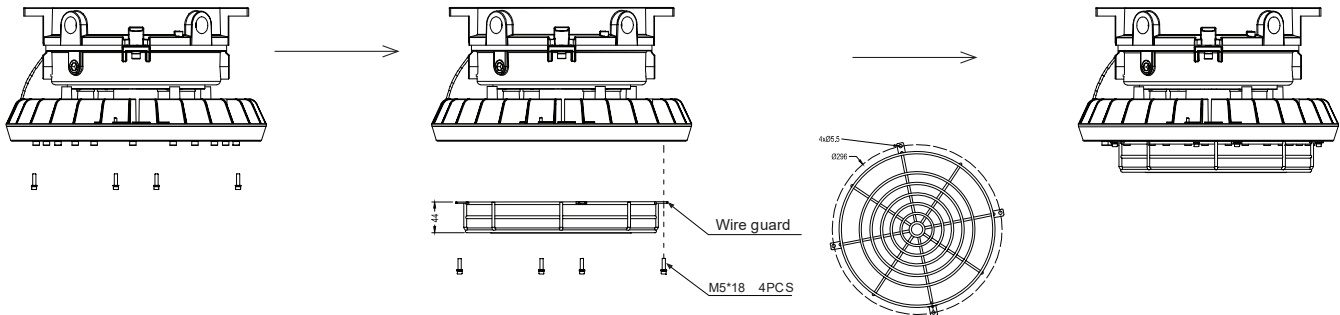
Guard Pro LO (GPL)



Guard Pro HI (GPH)

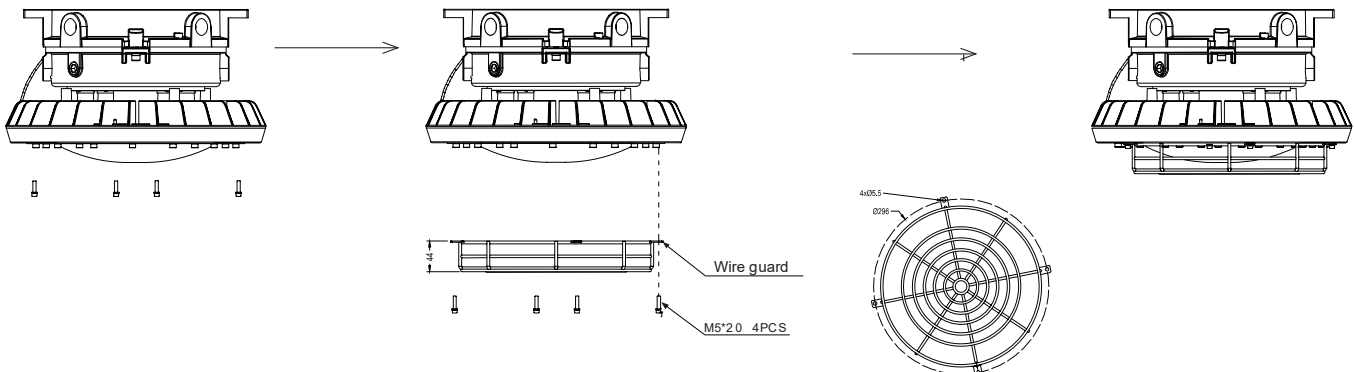
Guard Pro HI (Flat Glass)

1. Remove the four (4) M5 lens cover bolts.
2. Align holes and install wire guard using the four (4) M5 bolts that were removed. Torque bolts to 20 in-lbs.



Guard Pro HI (Convex Glass)

1. Remove the four (4) M5 lens cover bolts.
2. Align holes and install wire guard using the four (4) M5 bolts that were removed. Torque bolts to 20 in-lbs.



Guard Pro™ Series Wire Guard

Installation Instructions

PHOENIX®
DURABILITY X DESIGN™

Guard Pro LO (Flat Glass or Convex Glass)

1. Remove the four (4) M4 lens cover bolts.
2. Align holes and install wire guard using the four (4) M4 bolts that were removed. Torque bolts to 12 in-lbs.

