

Australian Design No. 359170  
US Patent No. D762,321 S



Delivers up to 1300 lumens to doorways, walkways, cabins or other small areas

Competitive pricing with short lead times

AC or DC voltage input for application flexibility

Various mounting options for maximum versatility

LED technology increases efficiency, eliminates maintenance and supports green initiatives

### Key Applications

Accessways  
Doorways  
Above Deck & Below Deck Lighting  
Machine Rooms  
Area Lighting  
Indicator Lighting  
Tunnels  
Walkways

### Compliances

ETL/cETL Listed to:

- UL 1598 Suitable for Wet Locations
- UL 1598A Marine Outside Type (Saltwater)
- CSA C22.2 No. 250.0

CE

ABS

IP66 rated

LM79 and LM80 reports available

Buy American Act (BAA)

### Specifications

<b>Construction</b>	Cast aluminum housing
<b>Finish</b>	White thermoset powder coat
<b>Hardware</b>	Marine grade (316) stainless steel
<b>Lens</b>	Impact-resistant, diffuse polycarbonate Diffuse red, green, blue and amber lens accessories available (AMB-CL, BLU-CL, GRN-CL, RED-CL)
<b>Light source</b>	Up to 1300 lumens (13W) Conformal coated CRI ≥ 70 CCT 5000K 50,000 hour rated life
<b>Power source</b>	120-240V, 50/60Hz 12-24V DC
<b>Wiring</b>	Stranded wires Cord not included - standard 72.00 inch (1829 mm) cord with pigtail option (CD) NEMA 5-15 plug (120V only) sold separately (PLG-515)
<b>Through wiring</b>	Continuous row mounting (TW), comes standard with two 1/2 in NPT cable glands Continuous row mounting (TWO) - two cable glands opposite sides)
<b>Ambient operating temperature</b>	-30°C to +50°C
<b>Mounting</b>	Flush mount brackets - standard Harp mount available Rail mount available - 2.00 inch overall diameter Fixture can be mounted in any orientation
<b>Weight</b>	2.0 lb (0.9 kg)
<b>Warranty</b>	3 years



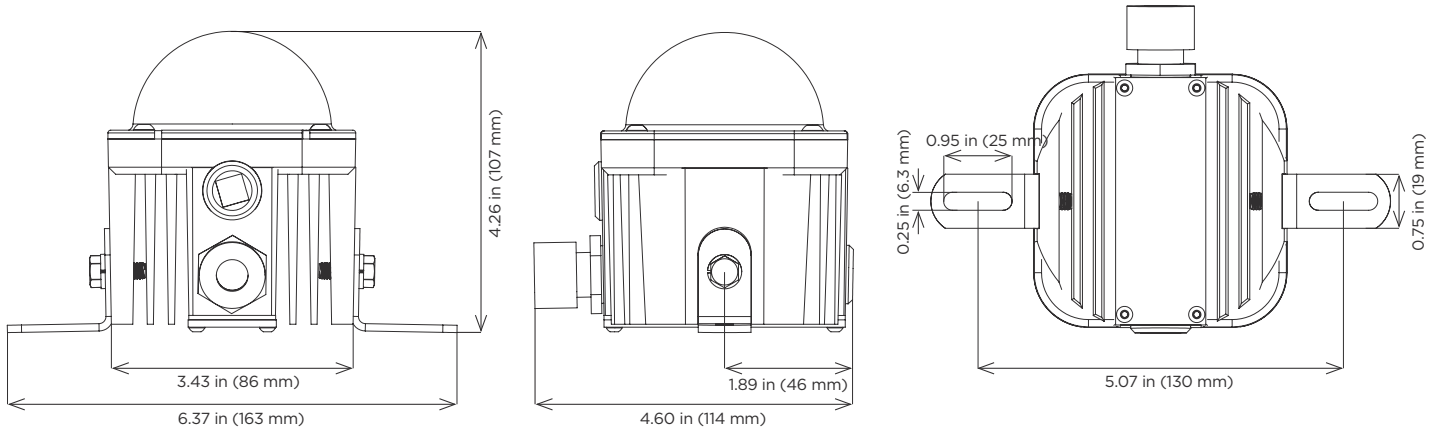
This product complies with domestic preference requirements such as BAA or TAA. For additional information, visit [phoenixlighting.com](http://phoenixlighting.com) or consult your representative.

For IES files, see website or contact factory

# Cube-Light

## Compact LED Area Light

### Dimensions



### Ordering Information

**Example:** CL-13LED-120-240

Fixture	Wattage/Type	Voltage	Options
CL	13LED	120-240 <sup>1,2</sup>	CD
		DC <sup>3</sup>	TW
			TWO

#### Wattage/Type

13LED Up to 1300 lumens (13W)

#### Voltage

120-240<sup>1,2</sup> 120-240V, 50/60Hz  
DC<sup>3</sup> 12-24V DC

#### Options

CD 72.00 inch (1829 mm) cord with pigtail option  
TW Through wire (continuous row mounting, cable glands same side)  
TWO Through wire (cable glands on opposite sides)

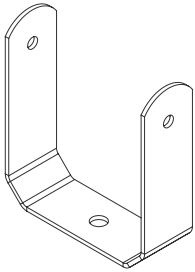
#### Notes

- 1 ETL/cETL listed
- 2 CE
- 3 No certifications

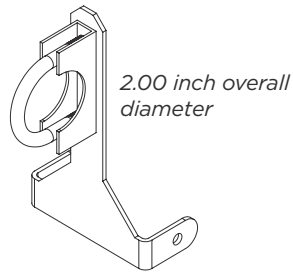
**Special Projects:** We may be able to accommodate your special projects, so please don't hesitate to ask about additional options. Minimum order quantities and/or extended lead times will apply. Contact your Phoenix representative with specific inquiries.

**Mounting (order separately)**

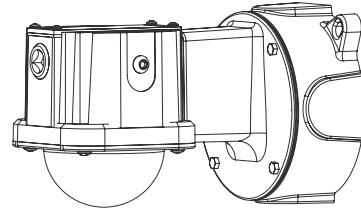
---



**Harp Mount**  
HRP-CL



**Rail Mount**  
RLMT-CL  
Contact factory

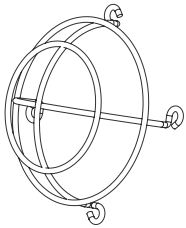


**Wall Mount**  
Complete fixture sold separately  
Refer to Cube-Light Wall Mount spec sheet

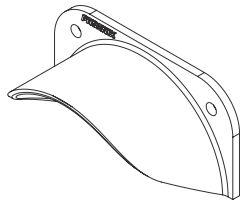
*Flush mount comes standard  
with fixture*

**Accessories (order separately)**

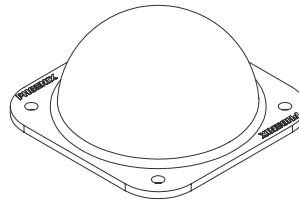
---



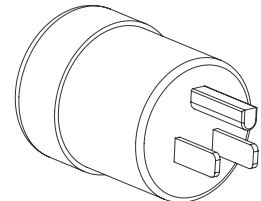
**Wire Guard Kit**  
WG-CL



**Visor Kit**  
VSR-CL



**Color Lens Kits**  
AMB-CL amber lens kit  
BLU-CL blue lens kit  
GRN-CL green lens kit  
RED-CL red lens kit



**NEMA 5-15 plug (120V only)**  
PLG-515