



Delivers up to 1000 lumens to doorways, walkways, cabins or other small areas

Competitive pricing with short lead times

Various mounting options for maximum versatility

LED technology increases efficiency, eliminates maintenance and supports green initiatives

Key Applications

Accessways
Doorways
Above Deck & Below Deck Lighting
Machine Rooms
Area Lighting
Indicator Lighting
Tunnels
Walkways

Compliances

ETL/cETL Listed to:

- UL 1598 Suitable for Wet Locations
- UL 1598A Marine Outside Type (Saltwater)
- CSA C22.2 No. 250.0

CE

ABS

IP66 rated

LM79 and LM80 reports available

Buy American Act (BAA)

Specifications

Construction	Cast aluminum housing
Finish	White thermoset powder coat
Hardware	Marine grade (316) stainless steel
Lens	Impact-resistant, diffuse polycarbonate Diffuse red, green, blue and amber lens accessories available (AMB-CL, BLU-CL, GRN-CL, RED-CL)
Light source	Up to 1000 lumens (13W) Conformal coated CRI ≥ 70 CCT 5000K 50,000 hour rated life
Power source	120-240V, 50/60Hz 13-27V DC
Wiring	Stranded wires Cord not included - standard 72.00 inch (1829 mm) cord with pigtail option (CD) NEMA 5-15 plug (120V only) sold separately (PLG-515)
Through wiring	Continuous row mounting option (TW)
Ambient operating temperature	-30°C to +50°C
Mounting	Flush mount brackets - standard Harp mount available Rail mount available - 2.00 inch overall diameter Fixture can be mounted in any orientation
Weight	2.0 lb (0.9 kg)
Warranty	3 years



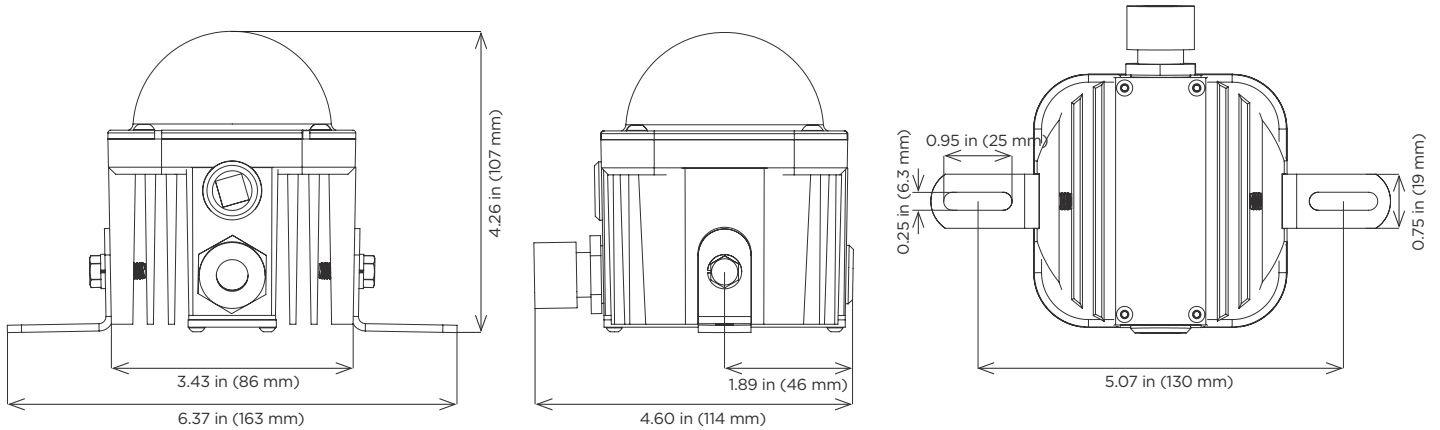
This product complies with domestic preference requirements such as BAA or TAA. For additional information, visit phoenixlighting.com or consult your representative.

For IES files, see website or contact factory

Cube-Light

Compact LED Area Light

Dimensions



Ordering Information

Example: CL-13LED-120-240

Fixture	Wattage/Type	Voltage	Options
CL	13LED	120-240 ^{1,2}	CD
		DC ³	TW

Wattage/Type

13LED Up to 1000 lumens (13W)

Voltage

120-240^{1,2} 120-240V, 50/60Hz
DC³ 13-27V DC

Options

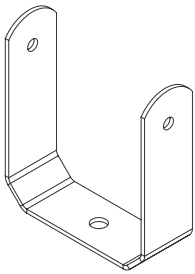
CD 72.00 inch (1829 mm) cord with pigtail option
TW Continuous row mounting

Notes

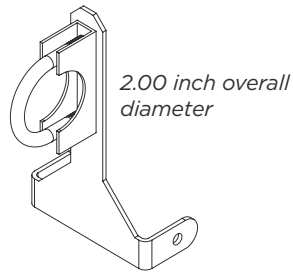
- 1 ETL/cETL listed
- 2 CE
- 3 No certifications

Special Projects: We may be able to accommodate your special projects, so please don't hesitate to ask about additional options. Minimum order quantities and/or extended lead times will apply. Contact your Phoenix representative with specific inquiries.

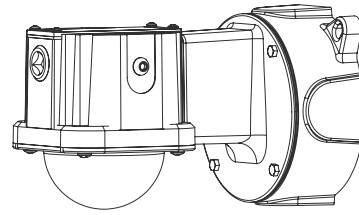
Mounting (order separately)



Harp Mount
HRP-CL



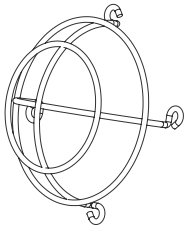
Rail Mount
RLMT-CL
Contact factory



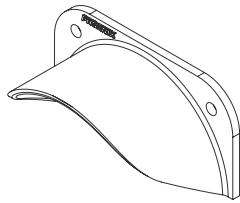
Wall Mount
Complete fixture sold separately
Refer to Cube-Light Wall Mount spec sheet

*Flush mount comes standard
with fixture*

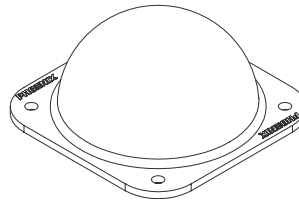
Accessories (order separately)



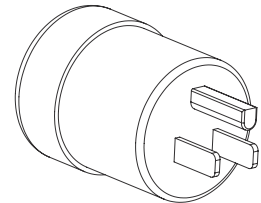
Wire Guard Kit
WG-CL



Visor Kit
VSR-CL



Color Lens Kits
AMB-CL amber lens kit
BLU-CL blue lens kit
GRN-CL green lens kit
RED-CL red lens kit



NEMA 5-15 plug (120V only)
PLG-515