



PHOENIX®
DURABILITY X DESIGN™

Sturdilite® Master Series

Low-voltage LED Floodlight

Patents Pending

Durable, premium line of LED fixtures

Lightweight, compact design ideal for use on mobile equipment

Customized optics minimize glare and provide precise optical control

LED technology increases efficiency, eliminates maintenance and supports green initiatives

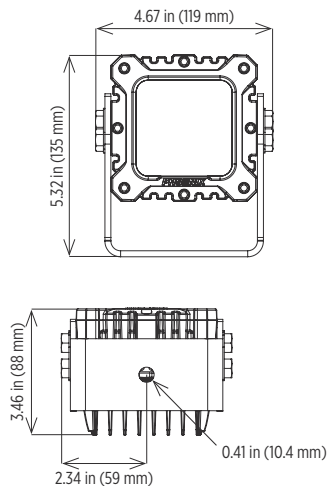


MST-LO

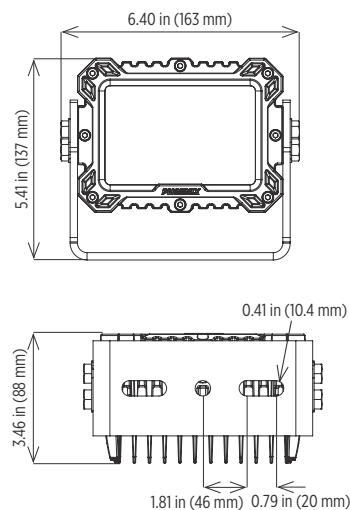
MST-MED

Dimensions

MST-LO



MST-MED



Sturdilite® Master Series

Low-voltage LED Floodlight



Specifications

Construction	Die cast aluminum housing
Finish	Gray powder coat
Hardware	316 stainless steel external hardware
Lens	High temperature, impact-resistant polycarbonate (PC) or tempered glass (GL)
Light source	Osram light emitting diodes (LED) Conformal coated circuit board 24W (LO) or 48W (MED) 5000K effective lumens up to 2500 lumens (LO), up to 5000 lumens (MED) Amber effective lumens up to 1825 lumens (LO), up to 3650 lumens (MED) Spot (SP), Flood (FL), Elliptical (EP) beam patterns 50,000 hour rated life
Power source	12-48V DC, 24-48V DC 10.00 inch cord with molded Deutsch connector Over-voltage , over-temperature and reverse polarity protection
Wiring	Stranded wires
Ambient operating temperature	-40°C to +65°C Light output regulation in high ambient temperature environments protects the life of the LEDs
Shock	65G along 3 axes
Vibration	5 Grms, 100-2200Hz along 3 axes
Salt spray	Tested to ASTM B117 for 1000 hours
Aiming	120° aiming capability, 5° markings on mounting harp Colored aiming indicator designates fixture beam pattern (SP: red, FL: blue, EP: black)
Mounting	304 stainless steel harp
Estimated Weight	MST-LO fixture: 3.0 lb (1.4 kg) MST-MED fixture: 4.5 lb (2.0 kg)
Warranty	3 years

Compliances

CE
IP69K
IK06 (glass)
IK10 (polycarbonate)

Wattage

	12V	24V	48V
LO	29W	24W	24W
MED	58W	48W	48W

For IES files, see website or contact factory



Ordering Information

Example: MST-LO-PC-SP-12-48

Fixture	Model	Lens	Optic	Voltage	Options
MST	LO	PC	SP	12-48	AM ^{2,3}
	MED	GL ¹	FL	24-48	
			EP		

Model		Lens		Optic		Voltage		Options	
LO	24W	PC	High temperature, impact-resistant polycarbonate	SP	Spot	12-48	12-48V DC	AM ^{2,3}	Amber LEDs, ideal for high fog/dust/snow/debris
MED	48W	GL ¹	High temperature, tempered glass	FL	Flood	24-48	24-48V DC		
				EP	Elliptical				

Notes

- 1 GL option recommended for applications where excessive dirt/debris, humidity and heat are present
- 2 Contact factory for availability
- 3 Only available with GL option

Special Projects: We may be able to accommodate your special projects, so please don't hesitate to ask about additional options. Minimum order quantities and/or extended lead times will apply. Contact your Phoenix representative with specific inquiries.



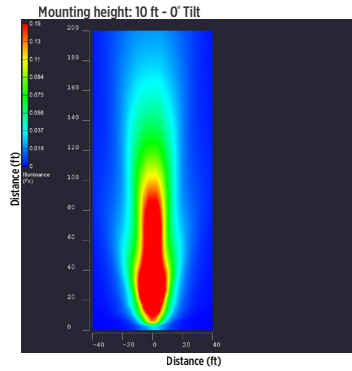
Sturdilite® Master Series

Low-voltage LED Floodlight

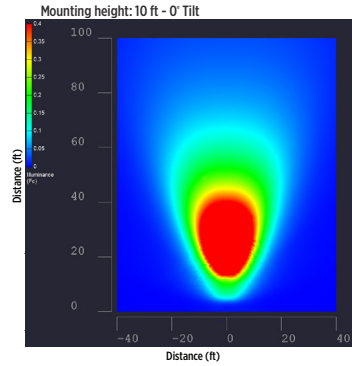
PHOENIX®
DURABILITY X DESIGN™

Isolux Charts

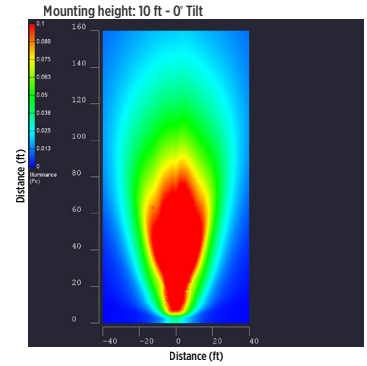
MST LO - Spot



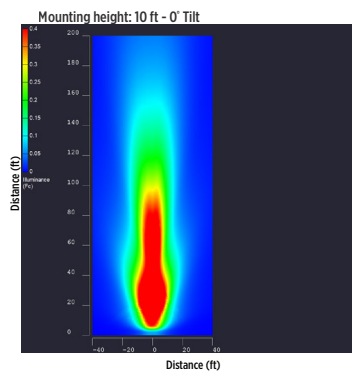
MST LO - Flood



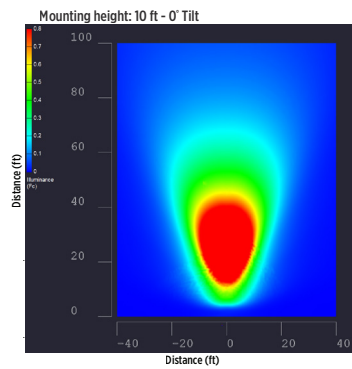
MST LO - Elliptical



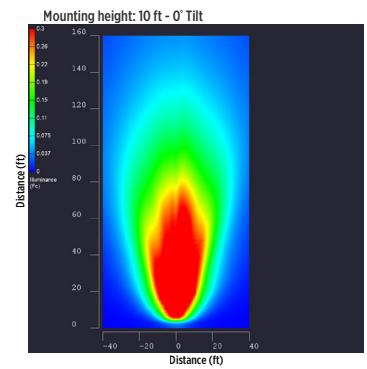
MST MED - Spot



MST MED - Flood



MST MED - Elliptical



Product design and specifications are subject to change without notice. The most current version of this specification sheet can be found on our website: www.phoenixlighting.com.