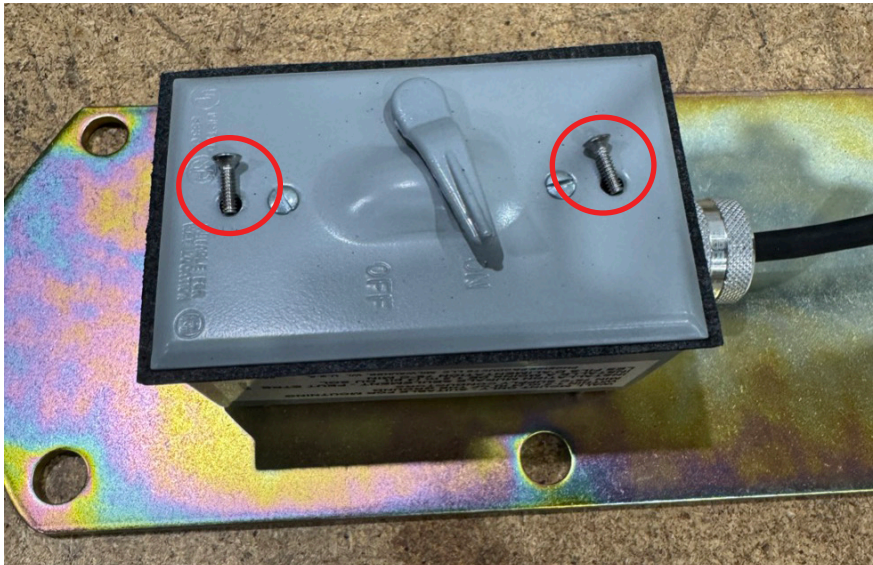


! CAUTION

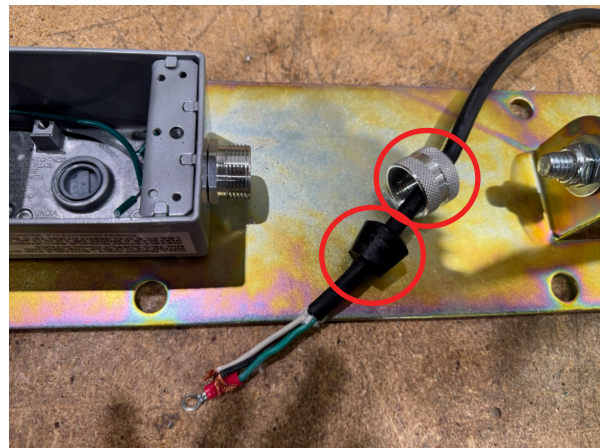
- All wiring should be done by a licensed electrician in accordance with state codes, local codes, and National Electric Code (NEC) standards.
- Improper installation may result in serious injury and void warranty.
- Contains parts and assemblies susceptible to damage by electrostatic discharge (ESD).
- Risk of electric shock.
- For maximum safety, use type SOW (wet location), 3 conductor, rubber-covered cord.

Wiring

1. Disconnect power to DLA2 fixture.
2. Using a flat screwdriver, open fixture's junction box by removing the two (2) cover screws.



3. Disconnect the DLA2 head wire connections (green is ground, white is neutral, black is line).
4. With a wrench, loosen and disassemble junction box cable gland. Keep grommet and cable gland cap for future use.



Product design and specifications are subject to change without notice.



DLAW 2 LED *docklite*® Head Replacement

Installation Instructions

PHOENIX®
DURABILITY X DESIGN™

5. Remove all three (3) strain reliefs on the DLAW2 docklite arm by compressing and pulling out.
6. Remove nut from DLAW2 head mounting bracket using a 19mm wrench. Save hardware for future use.



7. Pull cable through arm assembly to release DLAW2 head. Discard/ recycle damaged DLAW2 head.
8. Attach new DLAW2 head to the arm assembly using the hardware that was removed and step aside in Step 6. Tighten with a 19mm wrench.



9. Feed cable through arm using the openings in the arm assembly.
10. Reinstall all three (3) strain reliefs by compressing and popping into each of the three (3) opening in the arms assembly.
11. Reinstall the cable gland cap and grommet around the cable and connect to the junction box. Securely tighten cable gland and ensure cord is unable to be pulled out.
12. Make wiring connections (green is ground, white is neutral, black is line).
13. Reinstall junction box cover using flat screwdriver.
14. Restore power to DLAW2 fixture.

