

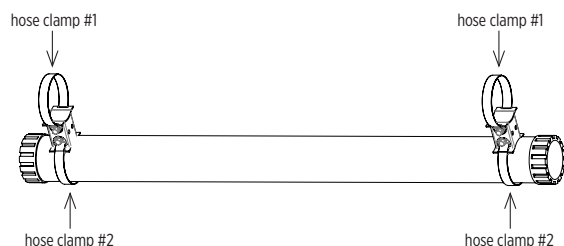
### ! CAUTION

- All wiring should be done by a licensed electrician in accordance with state codes, local codes, National Electric Code (NEC) standards and International Electrotechnical Commission (IEC) standards.
- Improper installation may result in serious injury and void warranty.
- Keep plugs and receptacles dry. This fixture should only be used on Ground Fault Circuit Interrupter (GFCI) protected circuits.
- Contains parts and assemblies susceptible to damage by electrostatic discharge (ESD).
- When using luminaires, basic safety precautions should always be followed to reduce the risk of fire, electric shock and personal injury.

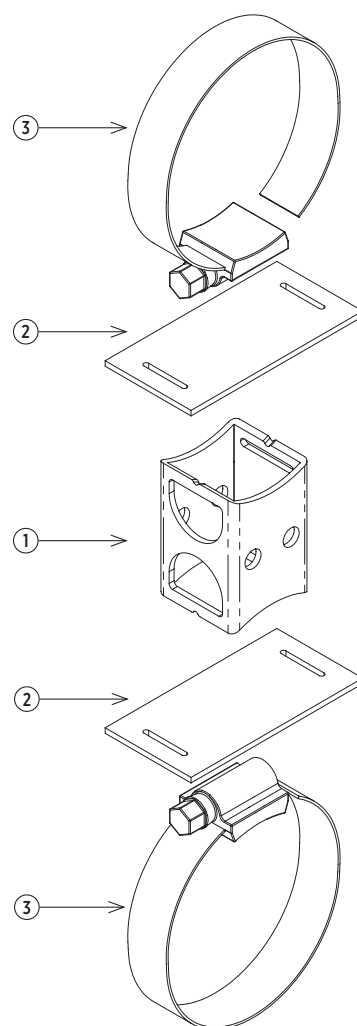
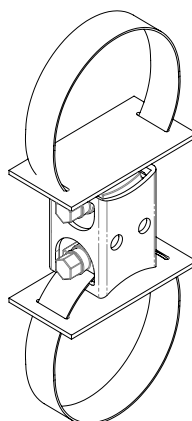
### Rail Mount Installation

1. Ensure power is not connected to LEDLT lighting fixture.
2. Brackets come pre-assembled. Using  $\frac{5}{16}$  nut driver, remove tail end of hose clamp #1 from Items 1 and 2. Leave head in place.
3. Wrap tail end of hose clamp #1 around rail.
4. Insert tail end of hose clamp #1 into slot of Item 2 and then into slot of Item 1.
5. Connect tail and head ends of clamp. Loosely tighten using nut driver.
6. Repeat steps 2 through 5 for second rail mount bracket assembly.
7. Insert LEDLT into hose clamp #2 of both brackets. Repeat steps 2 through 6 as needed to insert LEDLT.
8. Adjust position of brackets on rail and tighten using nut driver.
9. Adjust position of LEDLT in brackets and tighten using nut driver.
10. (Re)connect power to LEDLT lighting fixture.

Reference image below for proper assembly.



rail mount  
bracket assembly



Item	Description
1	coupling bracket
2	rubber liner
3	hose clamp



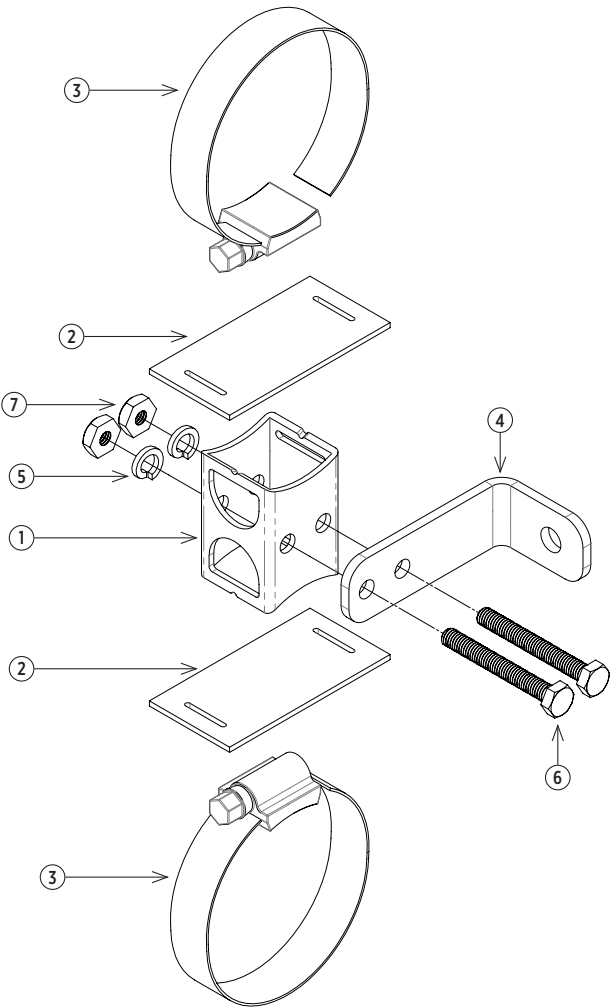
# LEDLT Rail and Surface Mounts

## Installation Instructions

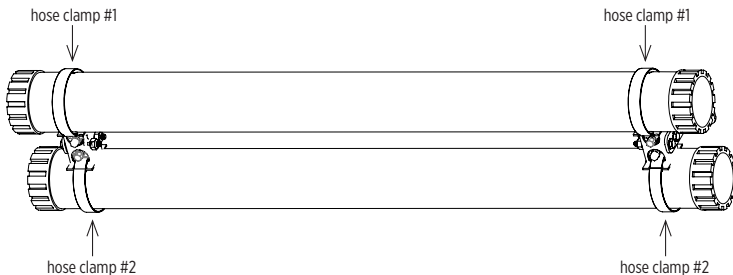
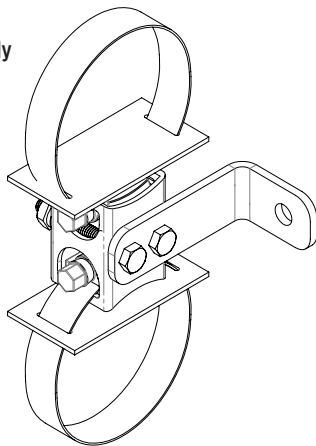
### Surface Mount Installation

1. Ensure power is not connected to LEDLT lighting fixture.
2. Secure both L brackets (Item 4) to surface using ¼-20 or M6 hardware (not supplied).
3. Brackets come pre-assembled. Using ⅝ nut driver, remove tail end of hose clamp #1 from Items 1 and 2. Leave head in place.
4. Using the first surface mount bracket, wrap hose clamp #1 around first LEDLT.
5. Insert tail of hose clamp #1 (Item 3) into slot of rubber liner (Item 2) and then through slot in coupling bracket (Item 1).
6. Insert tail of hose clamp #1 into head of hose clamp #1.
7. Loosely tighten hose clamp #1 using nut driver.
8. Repeat steps 3 through 7 for second surface mount bracket.
9. Using hose clamp #2, repeat steps 3 through 8 for the second LEDLT.
10. Adjust position of both LEDLTs within brackets and tighten using nut driver.
11. (Re)connect power to LEDLT lighting fixtures.

Reference image below for proper assembly.



surface mount  
bracket assembly



Item	Description
1	coupling bracket
2	rubber liner
3	hose clamp
4	L bracket
5	lock washer
6	screw
7	nut

Product design and specifications are subject to change without notice.

