

### ! CAUTION

- All wiring should be done by a licensed electrician in accordance with state codes, local codes, National Electric Code (NEC) standards and International Electrotechnical Commission (IEC) standards.
- Improper installation may result in serious injury and void warranty.
- Contains parts and assemblies susceptible to damage by electrostatic discharge (ESD).
- Surge protective devices should be utilized for fixtures installed in environments subject to power surges outside the specified operating parameters.

### Tools and Materials

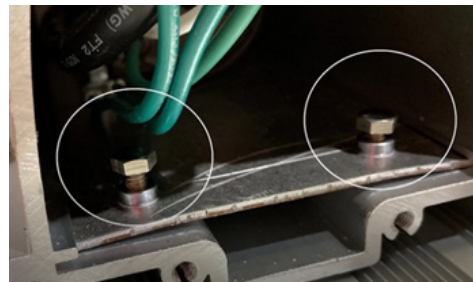
#### Phoenix Provided

- (1) new driver tray

#### Customer Provided

- (1) 3 mm Allen wrench
- (1) 7 mm wrench
- (1) wire stripper

Figure 1



### Wiring

1. Disconnect power to HDL fixture.
2. Remove four (4) screws from fixture end plate (power cord-side) using a 3 mm Allen wrench.
3. Remove two (2) screws from existing driver tray using a 7 mm wrench (see Figure 1).
4. Remove driver tray from fixture housing.
5. Disconnect power cable going to existing driver tray.
6. Disconnect red and black leads going to fixture.
7. Locate new driver tray. Connect red lead on driver tray to red lead on fixture. Connect blue lead on driver tray to black lead on fixture.
8. Connect driver power leads (green, white, black) to fixture cable.
9. Insert new driver tray into fixture.
10. Securely tighten two (2) 7 mm screws with a 7 mm wrench to hold driver tray in place within fixture.
11. Reinstall fixture end cap using four (4) screws with a 3 mm Allen wrench. Torque to 1.13 Nm.
12. Turn on power to HDL fixture.

### Maintenance

Periodic maintenance and cleaning is required to keep light fixture in peak operating condition. Buildup of dirt and/or debris will diminish performance, lead to premature failure and void the fixture's warranty.

1. Inspect fixture monthly or (more frequently if conditions require) for dirt and debris buildup on lenses and between fins of heatsink. Wash down with water as needed.
2. Inspect fasteners and verify cord grips are tight. Retighten as needed.  
**Note:** Cord grips should be hand tight plus ¼ turn.

