



PHOENIX[®]
DURABILITY X DESIGN™

LEDLT

LED Tube Light

Designed to replace select linear fluorescent fixtures

For use on walkways, heavy equipment, railcars, and other marine and industrial applications

Slim, lightweight design offered with various mounting options

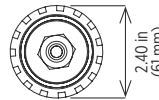
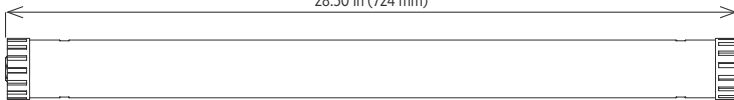
LED technology increases efficiency, eliminates maintenance and supports green initiatives



Dimensions

LEDLT-28

28.50 in (724 mm)



Specifications

Construction	Impact-resistant polycarbonate housing and end caps Extruded aluminum internal mounting plate
Hardware	Marine grade (304) stainless steel
Light source	Cree ML-E light emitting diodes (LEDs) 17W, 1250 lumens Conformal coated circuit board CRI > 80 CCT 5300K 50,000 hour rated life
Power source	120-277V, 50/60Hz - standard Fully potted 10-30V DC option available
Power factor	> 0.95
Wiring	1.50 m cord - standard Two 1.50 m cords (120-277V); one on each end of fixture (2C)
EMB	Contact factory
Ambient operating temperature	-20°C to +35°C
Mounting	Single fixture surface mount (MB-LEDLT) Hook mount (HKMT-LEDLT) Rail mount (RLMT-LEDLT) Two fixture surface mount (SFMT-LEDLT)
Weight	Fixture - 3.0 lb (1.3 kg) Packaged - 4.1 lb (1.8 kg)
Optical film	Diffuse optical film
Warranty	5 years

Contact factory for IES files

Compliances

ETL/cETL Certified to:

- UL 1598 Suitable for Wet Locations
- UL 1598A Marine Outside Type (Saltwater)
- CSA C22.2 No. 250.0

ABS

IP66 rated

LM79 and LM80 reports available

Ordering Information

Example: LEDLT-28

Fixture	Length	Options
LEDLT	28	2C DC ¹

Length

28 28 inch fixture - 17W, 1250 lumens

Options

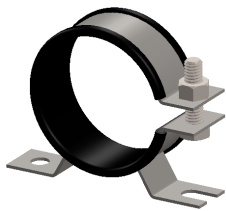
2C Two 1.50 m cords (120-277V); one on each end of fixture (pigtail)
DC¹ 10-30V DC

Notes

1 Not ETL listed

Special Projects: We may be able to accommodate your special projects, so please don't hesitate to ask about additional options. Minimum order quantities and/or extended lead times will apply. Contact your Phoenix representative with specific inquiries.

Mounting (required for complete installation - order separately)



Single Fixture Surface Mount
MB-LEDLT
(set of 2)



Hook Mount
HKMT-LEDLT



Rail Mount
RLMT-LEDLT
(set of 2)



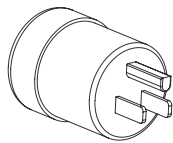
Two Fixture Surface Mount
SFMT-LEDLT
(set of 2)

Contact factory for additional mounting options
All mounting accessories consist of marine grade stainless steel

Accessories (order separately)



Gear Wrench
GW-LEDLT



NEMA 5-15 plug (120V only)
PLG-515



LEDLT

LED Tube Light

PHOENIX[®]
DURABILITY X DESIGN™

Cover photo: LEDLT fixtures mounted in a grain facility loading area

Product design and specifications are subject to change without notice. The most current version of this specification sheet can be found on our website: www.phoenixlighting.com.



Phoenix Products Company Inc. 8711 West Port Avenue Milwaukee, WI 53224 USA
Phone: +1 414.973.3300 Toll Free: 800.438.1214 Fax: +1 414.973.3210 www.phoenixlighting.com

N56110231
03.04.16