

Remote Ballast

INSTALLATION INSTRUCTIONS



Remote Ballast

INSTALLATION

The distance between the remote ballast and the light fixture is limited. Metal Halide fixtures are limited by the wire size used between the ballast and the fixture. To determine maximum distance between the ballast and fixture, refer to the chart below.

LAMP			MAXIMUM ONE WAY LENGTH OF WIRE BETWEEN LAMP AND BALLAST (FEET) (Voltage Drop Limited to 1% of Lamp Voltage) Minimum Wire Size				
Wattage	Mercury	Pulse Start/ Metal Halide	#10	#12	#14	#16	#18
100	H38	-	750	470	295	185	115
175	H39	M57	425	265	165	105	65
250	H37	M58	300	190	120	75	45
1-400 or 2-400	H33	M59	200	125	75	50	30
700	H35	-	465	290	180	115	70
1000	H36	M47	325	205	125	80	50
1500	-	M48	225	140	85	55	35

Taken from Advance Transformer Company 2002-2003 Catalog

When wiring a multi-tapped ballast, verify that the input voltage is connected to the appropriate lead.

CAUTION NOTES

All wiring should be done by licensed electricians in accordance with state and local codes as well as NEC (National Electrical Code) standards. Improper installation or use may result in serious injury.

Do not drill or punch holes into the housing. The unit is a sealed assembly rated for Hazardous Locations. Any added holes void the UL listing (see "Mounting" below).

High pressure sodium and metal halide with pulse start ballasts are limited by the type of ignitor supplied inside the ballast. Phoenix[®] ballasts are typically supplied with long range ignitors which allow mounting with up to 50 feet of wire from the light fixture to the ballast.

MOUNTING

The ballast may be mounted with or without the included mounting brackets. The housing is designed with channels to accept ½ inch hex bolts (not included). Refer to the profile on Page 2 for dimensions. The brackets mount to the ballast housing using ½ inch hex bolts, nuts and washers (not provided).

N-5485600C-1

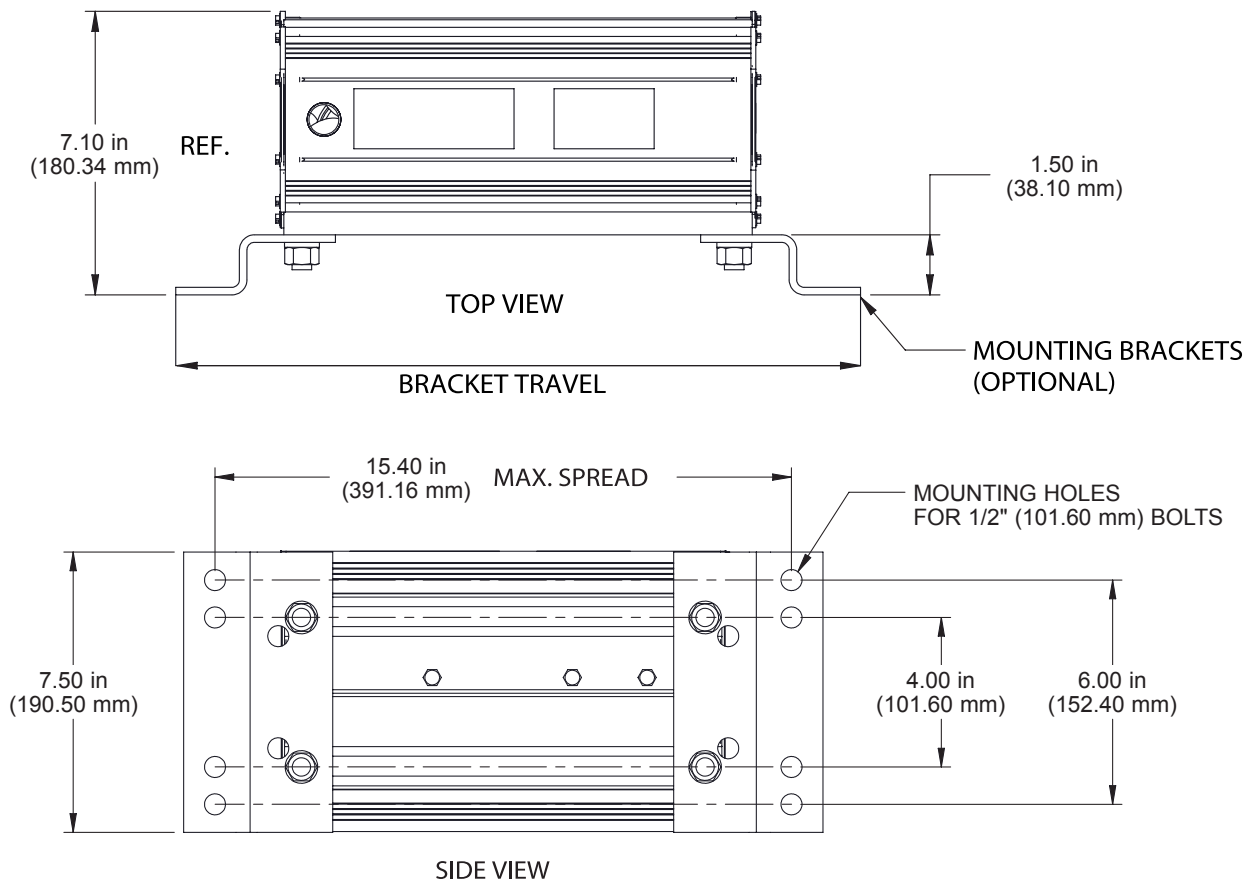
PHOENIX
Durability by Design

8711 West Port Avenue • Milwaukee, WI 53224 USA •
Tel: +1 414.973.3300 • Fax: +1 414.973.3210 • www.phoenixlighting.com



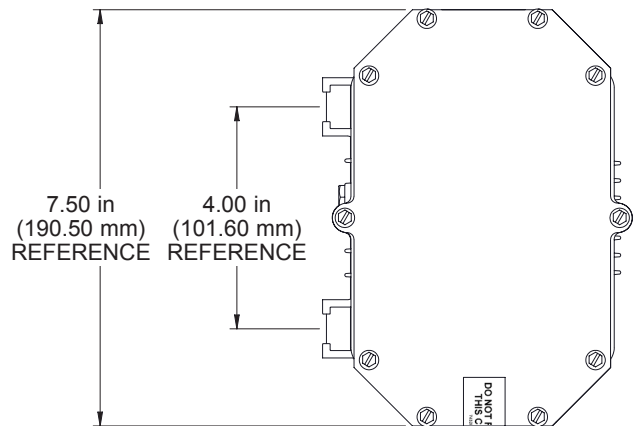
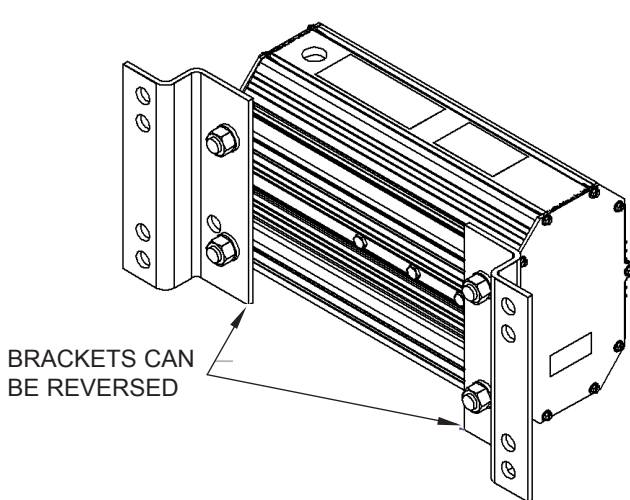
Remote Ballast

INSTALLATION INSTRUCTIONS



BRACKET MOUNTING

Hardware shown for clarity. Not supplied by Phoenix Products Company Inc.



MOUNTING PROFILE
(without brackets)

N-5485600C-2

PHOENIX
Durability by Design

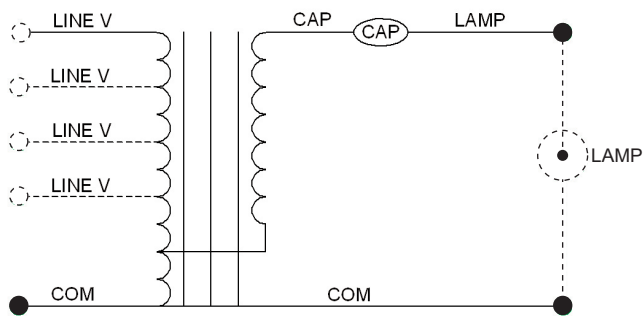
8711 West Port Avenue • Milwaukee, WI 53224 USA •
Tel: +1 414.973.3300 • Fax: +1 414.973.3210 • www.phoenixlighting.com

Remote Ballast

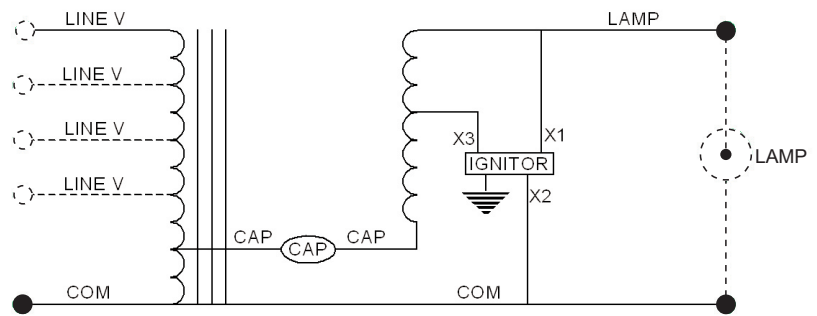
INSTALLATION INSTRUCTIONS

WIRING

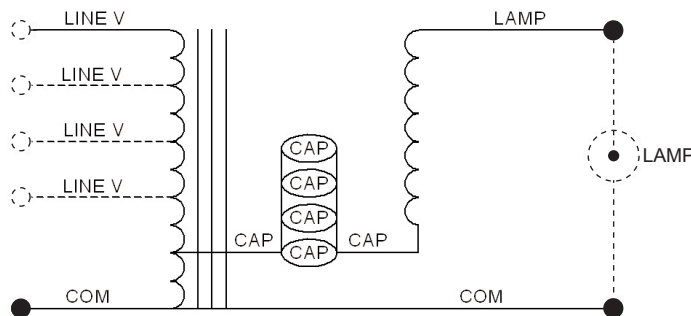
The ballast is designed with an internal wiring compartment for the power and lamp lead connections. The housing is supplied with 1/2 inch NPT threaded openings to accommodate electrical fittings (not supplied). Use tapered thread or appropriate water-tight fittings. See schematics below.



Metal Halide



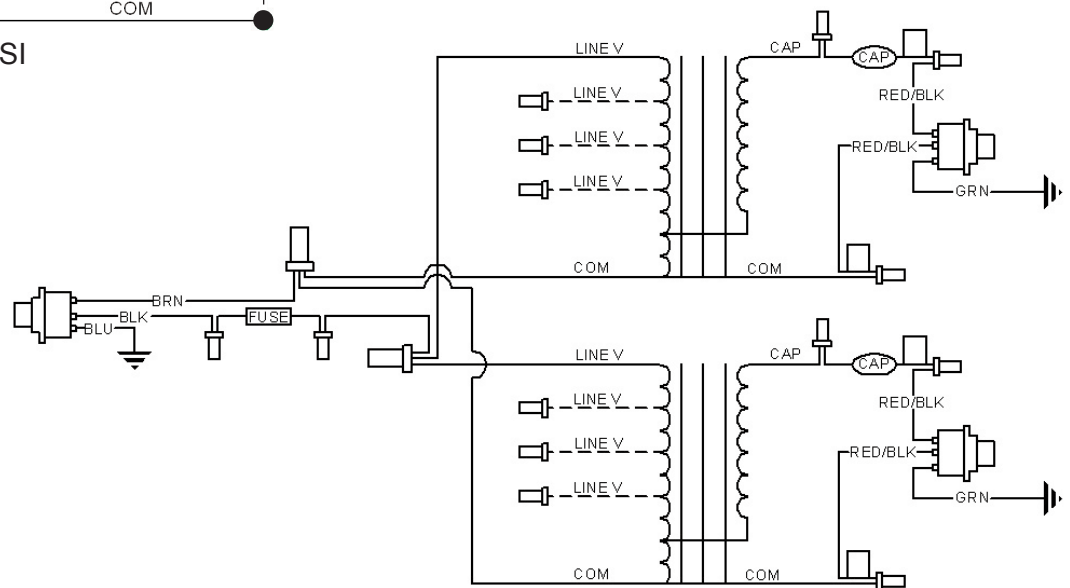
High Pressure Sodium
Pulse Start Metal Halide



CSI

KEY:

- CUSTOMER CONNECTIONS
- OPTIONAL CUSTOMER CONNECTIONS
- PHOENIX WIRING



Dual Ballast

N-5485600C-3

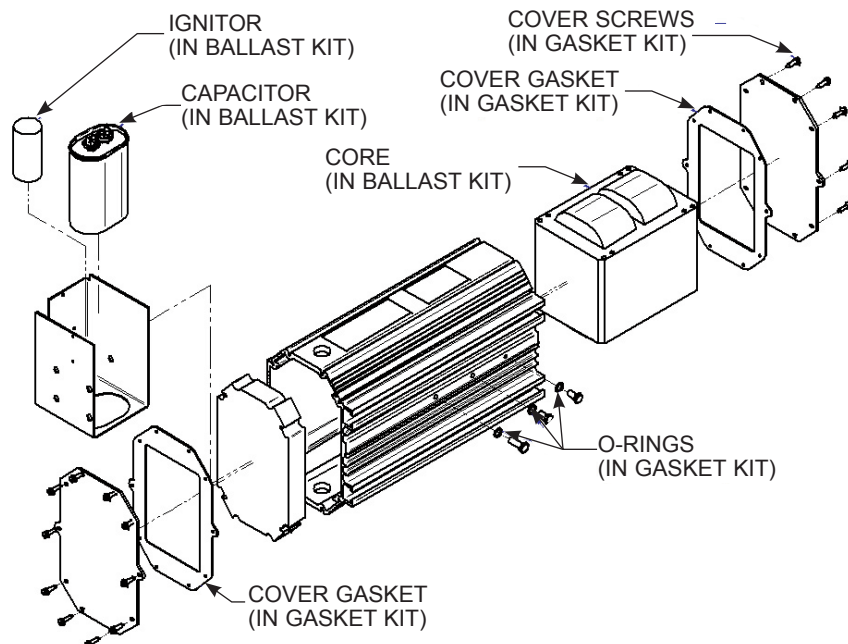
PHOENIX
Durability by Design

8711 West Port Avenue • Milwaukee, WI 53224 USA •
Tel: +1 414.973.3300 • Fax: +1 414.973.3210 • www.phoenixlighting.com

Remote Ballast

INSTALLATION INSTRUCTIONS

Ballast Model No.	Complete Ballast Part No.	Ballast Kit Part No.
BLSTA	BLSTA1000HPS-QV	010104.207



N-5485600C-4

PHOENIX
Durability by Design

8711 West Port Avenue • Milwaukee, WI 53224 USA •
Tel: +1 414.973.3300 • Fax: +1 414.973.3210 • www.phoenixlighting.com