



PHOENIX[®]
DURABILITY X DESIGN™

ModCom[®] Hi

Modular LED Floodlight

US Design Patent No. US D693,508; D736,982; D737,493
Australian Design No. 346288

300W design delivers 23,000 lumens and replaces up to 1000W HID fixtures

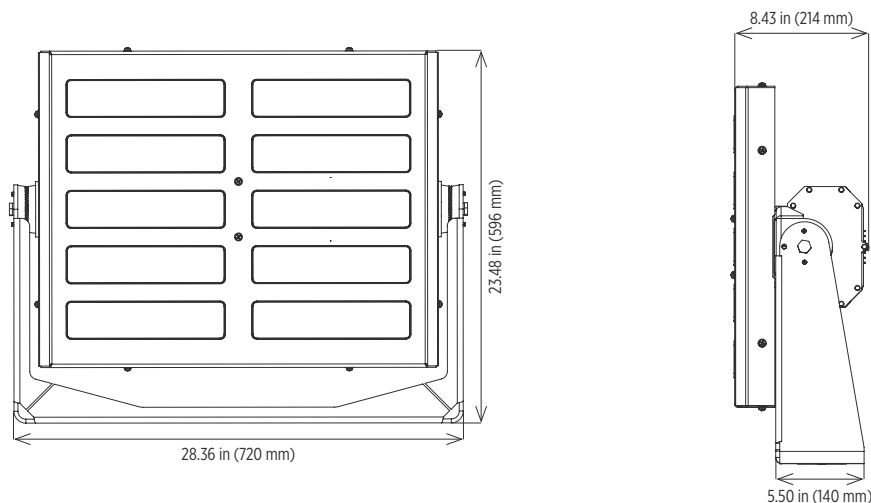
Optic options for maximum versatility

Expertly engineered with durable, marine grade components

LED technology increases efficiency, eliminates maintenance and supports green initiatives



Dimensions



Specifications

Construction	Marine grade aluminum frame, LED module, driver housing and cover
Finish	White thermoset powder coat
Hardware	Marine grade (316) stainless steel
Lens	UV- and impact-resistant polycarbonate lens
Light source	Lumileds Luxeon light emitting diodes (LED) Up to 300W (fixture) Up to 23,000 lumens (fixture) CRI > 70 50,000 hour rated life Conformal coated circuit boards Replaceable Cool white (5400K) - standard Neutral white, warm white and amber options - contact factory
Power source	Premium brand: 120-277V, 50-60Hz or 277-480V, 50-60Hz Can accept 127-431V DC (120-277V only) Overload, over-voltage, over-temperature and short-circuit protection Designed to meet EMC standard Fully potted Replaceable
Power factor	> 0.98 (at 115V)
Surge protection	10kV (10kA) Dissipates 270 joules at 277V Dissipates 360 joules at 480V
Wiring	Stranded wires External sleeved wires
Ambient operating temperature	-40°C to +50°C (non-hazardous locations) -30°C to +40°C (hazardous locations) Designed for use in areas allowing air flow Higher ambient temperature models available - contact factory
Aiming	Lockable aiming washers position fixture in 5° increments Rotates 360°, 16° lateral adjustment
Mounting	Adjustable steel harp
Weight	Fixture: 77.0 lb (34.9 kg) Packaged: 90.0 lb (40.8 kg)
Carton size	33.00 in x 28.00 in x 11.00 in (838 mm x 711 mm x 279 mm)
Safety cable	Safety cable included
Warranty	5 years

Compliances

ETL/cETL Certified to:

- UL 1598 Ordinary Wet Locations
- UL 1598A Marine Outside Type (Saltwater)
- UL 844 Hazardous Location
 - Class I, Division 2 Groups A, B, C, D
 - Class II, Division 2 Groups F & G
 - Class III
- T6, 85°C maximum surface temperature
- CSA C22.2 No. 250.0

CB/CE

SAA Approval AS/NZS 60598.2.5

DLC - contact factory for details

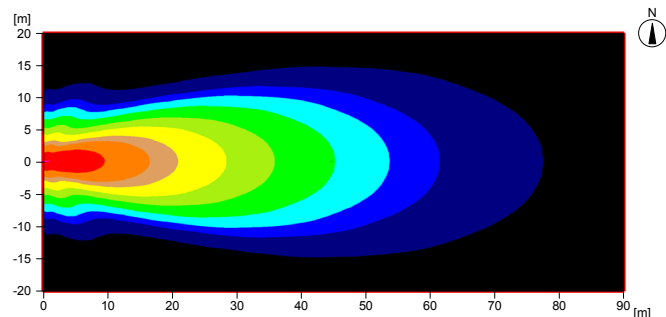
ABS

IP67 rated

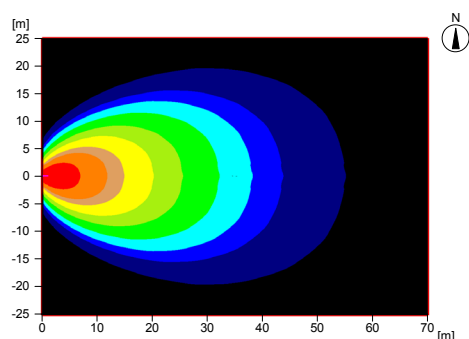
LM79 and LM80 reports available

Isolux charts

MCH-10-EZ-T



MCH-10-EZ-R



Ordering Information

Example: MCH-10-EZ-U-120-277

Fixture	No. of Modules	Model	Distribution	Voltage
MCH	10	EZ	U	120-277 ^{1,3}
			T	277-480 ²
			R	
			Q	

Distribution

U Perimeter light (shovel light)
T Narrow (24°)
R 50°
Q Medium floodlight

Voltage

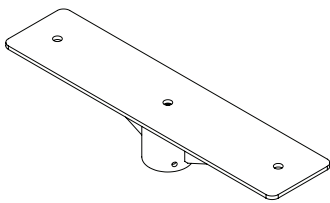
120-277^{1,3} 120-277V, 50-60Hz
277-480² 277-480V, 50-60Hz

Notes

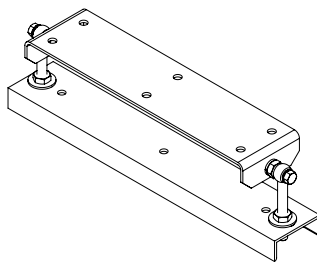
- 1 Two drivers
- 2 One driver
- 3 Can accept 127-431V DC (not ETL/cETL Certified)

Special Projects: We may be able to accommodate your special projects, so please don't hesitate to ask about additional options. Minimum order quantities and/or extended lead times will apply. Contact your Phoenix representative with specific inquiries.

Accessories (field installed, order separately)



2 3/8 inch Tenon Mount
MCPTM

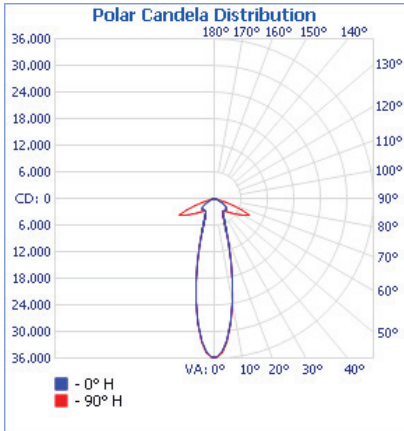


Boom Mount Kit
BMKM

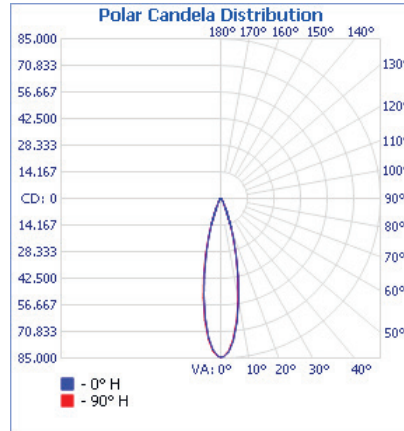


Photometrics

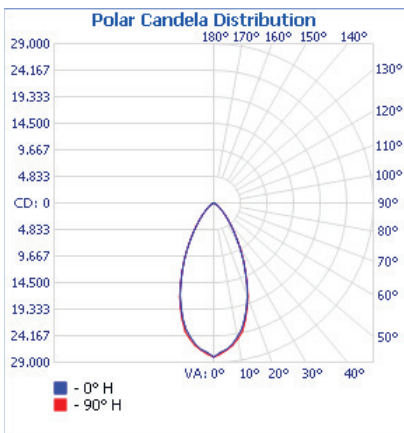
U – Perimeter Light (Shovel Light)



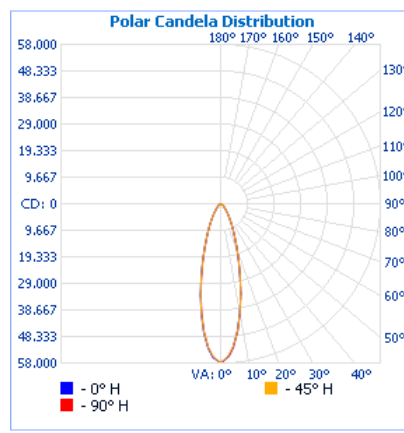
T – Narrow (24°)



R – 50°



Q – Medium Floodlight



Cover photo: ModCom[®] Hi fixtures shown on a dragline boom

Product design and specifications are subject to change without notice. The most current version of this specification sheet can be found on our website: www.phoenixlighting.com.

