

! CAUTION

- All wiring should be done by a licensed electrician in accordance with state codes, local codes and National Electric Code (NEC) standards.
- Improper installation may result in serious injury and void warranty.
- When using luminaires, basic safety precautions should always be followed to reduce the risk of fire, electric shock and personal injury, including the following:

When used in wet locations, Ground Fault Circuit Interrupter (GFCI) protection is to be provided on the circuit(s) or outlet(s) to be used for the luminaire. Receptacles are available having built-in GFCI protection and are able to be used for this measure of safety.

- Maximum distance to the receptacle is determined by the length of the cord provided.
- In cases where fixture may come in contact with flammable doors or other flammable materials, do not use a lamp over 150W and do not locate the fixture closer than 12.00 inches (305 mm) from the flammable material.

Wiring

The fixture is internally wired with a three-wire system from fixture to switch box on support bracket. Connection to local power supply must be made from switch box.

- For maximum safety we suggest using type "SOW" (wet location), 3 conductor, rubber-covered cord.
- Connect stripped leads in the switch box to cord conductors by means of wire nuts.
- Then connect cord to your power supply outlet.

Lamps (sold separately)

Will accept any PAR38 or R40 type lamp (with medium screw base). **Do not use ordinary home type lamps.**

Mounting

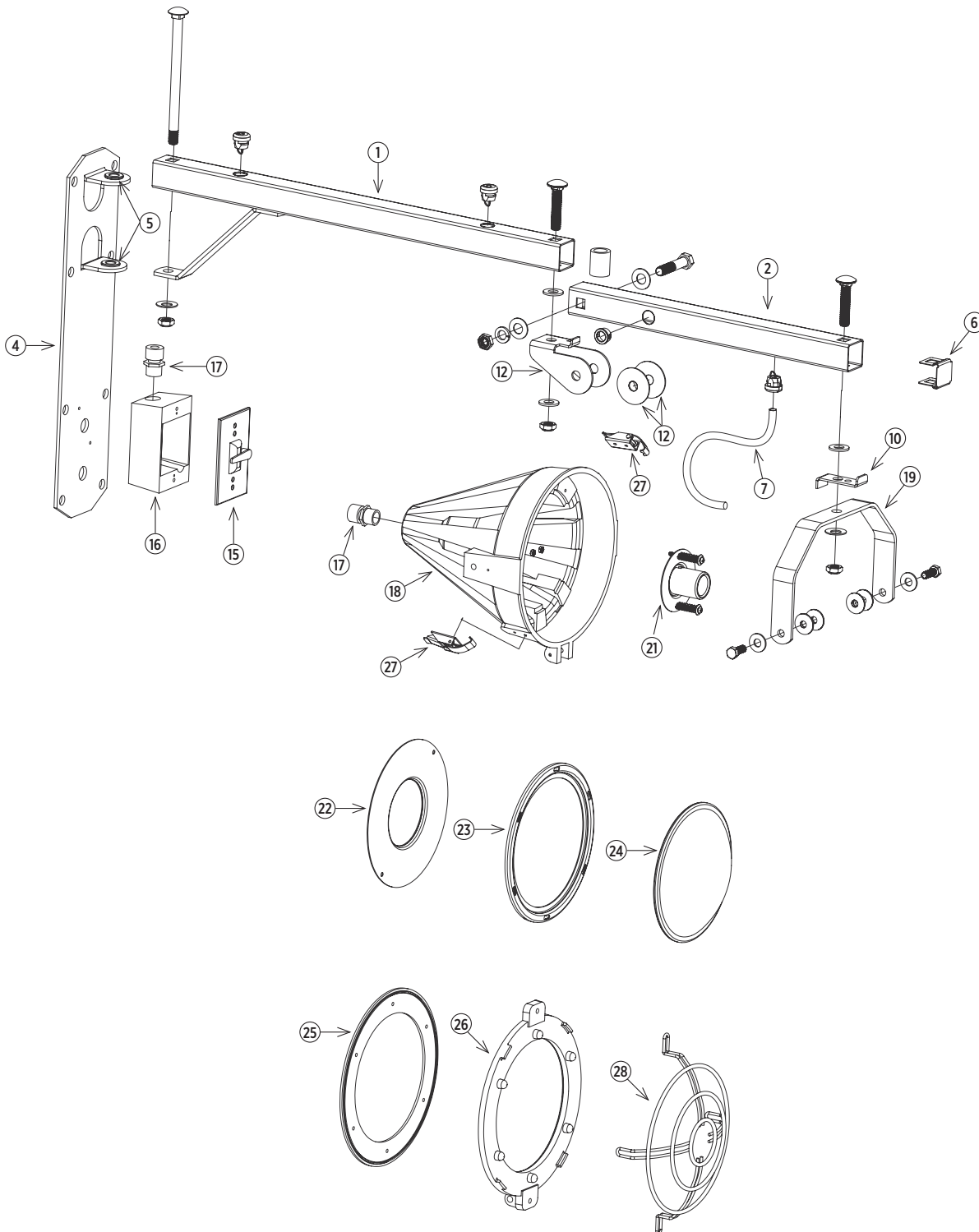
This fixture is designed for wall or post mounting and requires a flat vertical surface 5.00 inches (127 mm) high. If a large number of fixtures are to be installed, we suggest removing the support bracket from one fixture for use as a template to locate mounting holes. Four ½ inch (127 mm) bolts are required for mounting.

For the most efficient operation:

- Mount the fixture so the light head, in a level position, can be placed into the top corner of the lowest trailer expected to use the loading location. However, for proper clearance for an average person, mount bottom of bracket 6 feet 9 inches (2.1 m) from the floor.
- Mount the fixture as close to the door or opening edge as is practical.
- Do not mount in a manner that would allow the wall arm to be trapped below an overhead door as it is closing.

Some locations may require fabrication of a small bracket to extend the support bracket out from the wall in order to clear overhead door tracks or other obstructions at the immediate door edge. An easy and inexpensive bracket of this type may be made by torching off 20.00 inch (508 mm) sections from scrap I-beam pieces of the required offset depth. Consult your maintenance department for guidance.



Repair Parts

Repair Parts List

Item No.	Part Description	Model No. DL-300DWT-42	Model No. DL-300DWT-60
1	wall arm	1510040	1510041
2	lamp arm	3100621	2104900
4	wall mounting plate with bearings	2609702	2609702
5	bearings only (for item 4)	7507600	7507600
6	end cap	5100600	5100600
7	cord set	4114800	4114801
10	swivel stop	2657400	2657400
12	flex joint with friction washers	1160014	1160014
15	switch and cover	4010700	4010700
16	switch box	4000800	4000800
17	cord grip	4032800	4032800
18	shell assembly	1156000	115600
19	harp	2401901	2401901
21	socket assembly	1155900	1155900
22	lamp support	1090060	1090060
23	lens retainer	1090050	1090050
24	cover glass	4602900	4602900
25	gasket	5003801	5003801
26	door	2662402	2662402
27	latch fasteners with screws	1160120	1160120
28	wire guard and mounting hardware	1070200	1070200

Product design and specifications are subject to change without notice.

